



## **On-line PICASSO PROJECT**

**Comprehensive Catalogue Raisonné  
Prof. Dr. Enrique Mallen**

**1936**



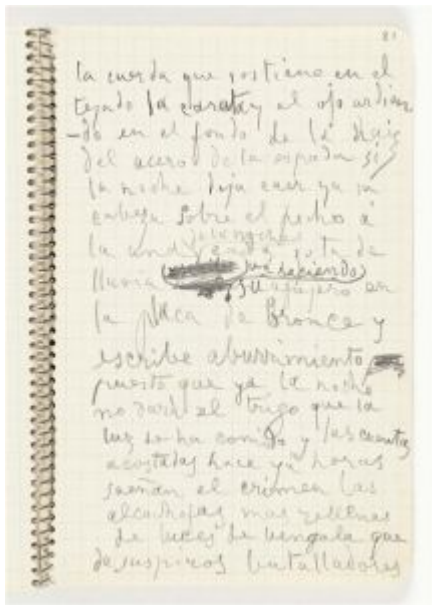
**belleza peregrina ... (2)**. Paris. 1~3-January/1936. India ink & pen on folded paper. 25,8 x 34,2 cm. Musée Picasso, Paris. Dation 1979.

OPP.36:110; MPP:3663.118.01r; CW.89:82p; PP.19:77p

**belleza peregrina ... (1)**. Paris. 1, 3-January/1936. Graphite on squared, beige vellum paper. 13,5 x 9,5 cm. Musée Picasso, Paris. Dation 1979.

OPP.36:217; MPP:3663.9.79r; AM.08:41p





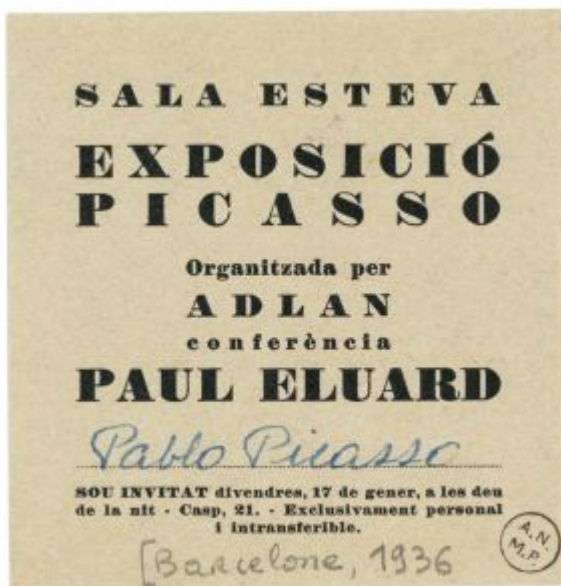
**belleza peregrina ... (1)**. Paris. 1, 3-January/1936. Graphite on squared, beige vellum paper. 13,5 x 9,5 cm. Musée Picasso, Paris. Dation 1979.

**OPP.36:218**; MPP:3663.9.81r; AM.08:42p

**belleza peregrina ... (1)**. Paris. 1~3-January/1936. Graphite on squared beige vellum paper. 13,5 x 9.5 cm. Musée Picasso, Paris.

**OPP.36:499**; MPP:3663.9.83r





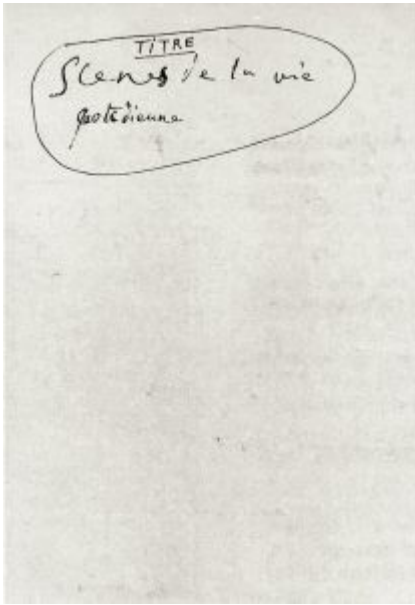
**Invitation à une conférence de Paul Éluard dans Sala Esteva.** Barcelona. [Early]/1936. Pen & pencil on printed paper. 10 x 9,6 cm. Musée Picasso, Paris. (Inv 515AP/A/2/4).

**OPP.36:353**; BA.19c:62p

**les violettes ....** Paris. 3-January/1936. India ink & pen on Arches paper folded in two. 25,5 x 34,2 cm. Musée Picasso, Paris. Dation 1979.

**OPP.36:111**; MPP:3663.119.01r; AM.08:94p; BP.21:190p; CW.89:83p; EC.02:592; PP.19:149p





**silence ivre mort ....** Paris. 3-January/1936. India ink. S/U. Musée Picasso, Paris.

**OPP.36:201**; CW.89:394p



**silence ivre mort ....** Paris. 3-January/1936. Pen & India ink on Ingres d'Arches paper. 25,7 x 34,2 cm. Musée Picasso, Paris.

**OPP.36:202**; MPP:3663.119.03r; CW.89:394p

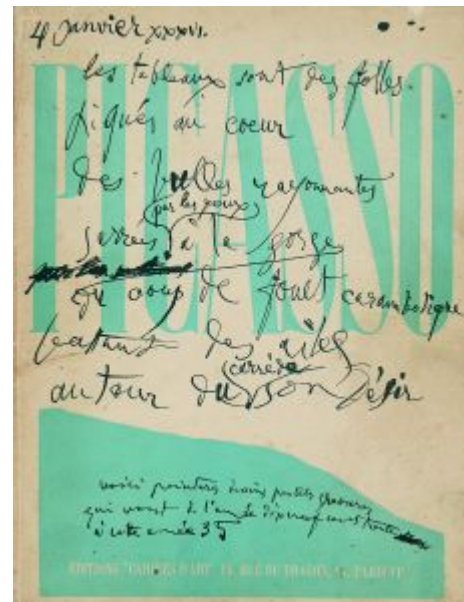


**silence ivre mort** .... Paris. 3-January/1936. Pen & India ink on paper. 25,7 x 34,2 cm. Musée Picasso, Paris.

**OPP.36:455**; MPP:3663.119.02v

**les tableaux sont des folles** .... Paris. 4-January/1936. India ink on cover page of Cahiers d'art. S/U. Musée Picasso, Paris.

**OPP.36:203**; P.IV:738; BP.21:642p; CW.89:394p; PP.19:315p





**más que de la miel ... (1).** Paris. 5-January/1936. Graphite on squared beige vellum paper. 13,5 x 9.5 cm. Musée Picasso, Paris.

OPP.36:500; MPP:3663.9.85r

**más que de la miel ... (2), elle et moi ... (3) (4).** Paris. 5~6-January/1936. India ink & pen on paper. 25,8 x 34.2 cm. Musée Picasso, Paris. Dation 1979.

OPP.36:112; MPP:3363.118.03r;  
MPP:3663.1936.2; AM.08:167p; BP.21:193p;  
CW.89:87p; PP.19:92p





**alrededor del pozo ..., autour de pui ....** Paris. 6-January/1936. Black ink on typed page. 27,1 x 20,9 cm. Musée Picasso, Paris. Dation 1979.

**OPP.36:206**; MPP:3663.123.1; AM.08:174p; CW.89:396p; PP.19:146p

**elle et moi ... (2).** Paris. 6-January/1936. Black pencil on envelope. 14,7 x 11,4 cm. Musée Picasso, Paris. Dation 1979.

**OPP.36:222**; MPP:3663.121r; AM.08:46p; PP.19:167p







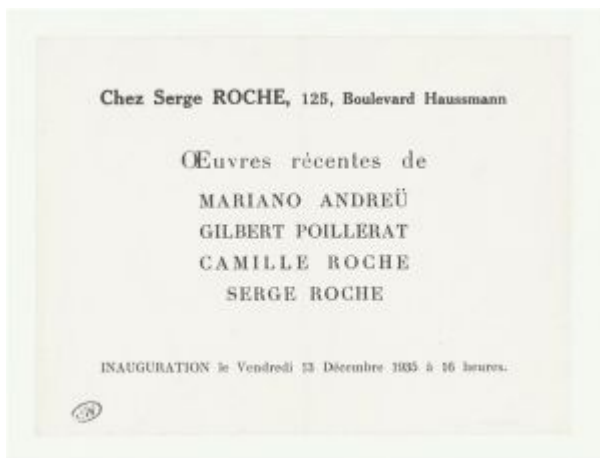
**elle et moi ... (2)**. Paris. 6-January/1936. Black pencil on envelope. S/U. Musée Picasso, Paris.

**OPP.36:237**; AM.08:166p

**la finesse d'ouïe ... (1)**. Paris. 6-January/1936. Black ink & graphite on beige paper [Obverse of *elle et moi ...*]. 14,2 x 10,6 cm. Musée Picasso, Paris.

**OPP.36:456**; MPP:3663.120r





**elle et moi ....** Paris. 6-January/1936. Printed paper [Reverse of *la finesse d'ouie ... (1)*]. 14,2 x 10,6 cm. Musée Picasso, Paris.

**OPP.36:457**; MPP:3663.120v

**alrededor del pozo ....** Paris. 6-January/1936. Pen & India ink on Ingres d'Arches paper. 25,8 x 34,3 cm. Musée Picasso, Paris.

**OPP.36:480**; MPP:3663.122(1).01r





**alrededor del pozo ....** Paris. 6-January/1936. Pen & India ink on Ingres d'Arches paper. 25,8 x 34,3 cm. Musée Picasso, Paris.

**OPP.36:481**; MPP:3663.122(1).03r

**milles de cables ....** Paris. 6, 7-January/1936. Pen, black, grey ink & graphite on beige paper [Obverse of *milles de cables ...*]. 12,9 x 15,6 cm. Musée Picasso, Paris.

**OPP.36:458**; MPP:3663.126r





**milles de cables ....** Paris. 6, 7-January/1936.  
Pen & black & grey ink on beige paper [Reverse of *milles de cables ...*]. 12,9 x 15,6 cm. Musée Picasso, Paris.

**OPP.36:459**; MPP:3663.126v

**virginidad del toro ....** Paris. 6-January~2-February/1936. Pencil on newsprint from *École et Liberté*, 12/15/1935 [Obverse of *virginidad del toro ...*]. 8,1 x 24,7 cm. Musée Picasso, Paris. Dation 1979.

**OPP.36:204**; MPP:3663.122(5)r;  
AB.00\*:109; AM.08:44p; BP.21:645p;  
CW.89:394p; PP.19:166p





**la fille du marchand ....** Paris. 6-January~2-February/1936. Graphite on newsprint [Obverse of *la fille du marchand ....* 3,6 x 20,1 cm. Musée Picasso, Paris.

**OPP.36:342**; MPP:3663.122(2)r; PP.19:166p

**la fille du marchand ....** Paris. 6-January~2-February/1936. Black ink, graphite on newspaper [Reverse of *la fille du marchand ....* 36 x 20,1 cm. Musée Picasso, Paris.

**OPP.36:449**; MPP:3663.122(2)v





**virginidad del toro ....** Paris. 6-January~2-February/1936. Fragment newspaper from *École et Liberté*, 12/15/1935 [Reverse of *virginidad del toro ...*]. 8,1 x 24,7 cm. Musée Picasso, Paris.

**OPP.36:450**; MPP:3663.122(5)v

**alrededor del pozo ....** Paris. 6-January/1936. Typescript on paper. 27,1 x 20,9 cm. Musée Picasso, Paris.

**OPP.36:357**; MPP:3663.123.01v





**alrededor del pozo ....** Paris. 6-January/1936. Typescript on paper. 27,1 x 20,9 cm. Musée Picasso, Paris.

**OPP.36:358**; MPP:3663.123.02r

**alrededor del pozo ....** Paris. 6-January/1936. Typescript on paper. 27,1 x 20,9 cm. Musée Picasso, Paris.

**OPP.36:359**; MPP:3663.123.02v





**alrededor del pozo ....** Paris. 6-January/1936. Typescript on paper. 27,1 x 20,9 cm. Musée Picasso, Paris.

**OPP.36:360**; MPP:3663.123.03r

**alrededor del pozo ....** Paris. 6-January/1936. Typescript on paper. 27,1 x 20,9 cm. Musée Picasso, Paris.

**OPP.36:361**; MPP:3663.123.03v







**alrededor del pozo ....** Paris. 6-January/1936. Typescript on paper. 27,1 x 20,9 cm. Musée Picasso, Paris.

**OPP.36:362**; MPP:3663.123.04r

**alrededor del pozo ....** Paris. 6-January/1936. Typescript on paper. 27,1 x 20,9 cm. Musée Picasso, Paris.

**OPP.36:363**; MPP:3663.123.04v





**alrededor del pozo ....** Paris. 6-January/1936. Typescript on paper. 27,1 x 20,9 cm. Musée Picasso, Paris.

**OPP.36:364;** MPP:3663.123.05r

**alrededor del pozo ....** Paris. 6-January/1936. Typescript on paper. 27,1 x 20,9 cm. Musée Picasso, Paris.

**OPP.36:365;** MPP:3663.123.05v





**alrededor del pozo ....** Paris. 6-January/1936. Typescript on paper. 27,1 x 20,9 cm. Musée Picasso, Paris.

**OPP.36:366**; MPP:3663.123.06r

**alrededor del pozo ....** Paris. 6-January/1936. Typescript on paper. 27,1 x 20,9 cm. Musée Picasso, Paris.

**OPP.36:367**; MPP:3663.123.06v





**alrededor del pozo ....** Paris. 6-January/1936. Typescript on paper. 27,1 x 20,9 cm. Musée Picasso, Paris.

**OPP.36:368**; MPP:3663.123.07r

**alrededor del pozo ....** Paris. 6-January/1936. Typescript on paper. 27,1 x 20,9 cm. Musée Picasso, Paris.

**OPP.36:369**; MPP:3663.123.07v





**alrededor del pozo ....** Paris. 6-January/1936. Typewritten on paper. 27,1 x 20,9 cm. Musée Picasso, Paris.

**OPP.36:370**; MPP:3663.123.08r

**alrededor del pozo ....** Paris. 6-January/1936. Typewritten on paper. 27,1 x 20,9 cm. Musée Picasso, Paris.

**OPP.36:371**; MPP:3663.123.08v





**alrededor del pozo ....** Paris. 6-January/1936. Typescript on paper. 27,1 x 20,9 cm. Musée Picasso, Paris.

**OPP.36:372**; MPP:3663.123.09r

**alrededor del pozo ....** Paris. 6-January/1936. Typescript on paper. 27,1 x 20,9 cm. Musée Picasso, Paris.

**OPP.36:373**; MPP:3663.123.09v





**alrededor del pozo ....** Paris. 6-January/1936. Typescript on paper. 27,1 x 20,9 cm. Musée Picasso, Paris.

**OPP.36:374**; MPP:3663.123.10r

**alrededor del pozo ....** Paris. 6-January/1936. Typescript on paper. 27,1 x 20,9 cm. Musée Picasso, Paris.

**OPP.36:375**; MPP:3663.123.10v





**alrededor del pozo ....** Paris. 6-January/1936. Typescript on paper. 27,1 x 20,9 cm. Musée Picasso, Paris.

**OPP.36:376;** MPP:3663.123.11r

**alrededor del pozo ....** Paris. 6-January/1936. Typescript on paper. 27,1 x 20,9 cm. Musée Picasso, Paris.

**OPP.36:377;** MPP:3663.123.11v







**alrededor del pozo ....** Paris. 6-January/1936. Typewritten on paper. 27,1 x 20,9 cm. Musée Picasso, Paris.

**OPP.36:378**; MPP:3663.123.12r

**alrededor del pozo ....** Paris. 6-January/1936. Typewritten on paper. 27,1 x 20,9 cm. Musée Picasso, Paris.

**OPP.36:379**; MPP:3663.123.13r





**alrededor del pozo ....** Paris. 6-January/1936. Typewritten on paper. 27,1 x 20,9 cm. Musée Picasso, Paris.

**OPP.36:380**; MPP:3663.123.14r

**alrededor del pozo ....** Paris. 6-January/1936. Typewritten on paper. 27,1 x 20,9 cm. Musée Picasso, Paris.

**OPP.36:381**; MPP:3663.123.15r





alrededor del pozo .... Paris. 6-January/1936. Typescript on Montval Vergé paper. 26,7 x 20,5 cm. Musée Picasso, Paris.

OPP.36:382; MPP:3663.124.01r

alrededor del pozo .... Paris. 6-January/1936. Typescript on Montval Vergé paper. 26,7 x 20,5 cm. Musée Picasso, Paris.

OPP.36:383; MPP:3663.124.02r





alrededor del pozo .... Paris. 6-January/1936. Typescript on Montval Vergé paper. 26,7 x 20,5 cm. Musée Picasso, Paris.

OPP.36:384; MPP:3663.124.03r

alrededor del pozo .... Paris. 6-January/1936. Typescript on Montval Vergé paper. 26,7 x 20,5 cm. Musée Picasso, Paris.

OPP.36:385; MPP:3663.124.04r





alrededor del pozo .... Paris. 6-January/1936. Typescript on paper. 27,1 x 21 cm. Musée Picasso, Paris.

OPP.36:386; MPP:3663.125.01r

alrededor del pozo .... Paris. 6-January/1936. Typescript on paper. 27,1 x 21 cm. Musée Picasso, Paris.

OPP.36:387; MPP:3663.125.02r





alrededor del pozo .... Paris. 6-January/1936. Typscript on paper. 27,1 x 21 cm. Musée Picasso, Paris.

OPP.36:388; MPP:3663.125.03r

alrededor del pozo .... Paris. 6-January/1936. Typscript on paper. 27,1 x 21 cm. Musée Picasso, Paris.

OPP.36:389; MPP:3663.125.04r



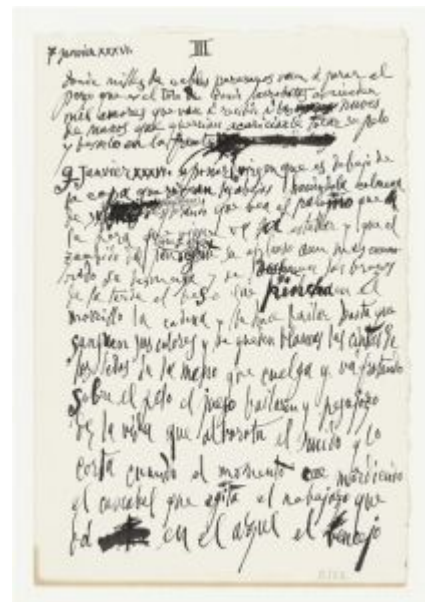


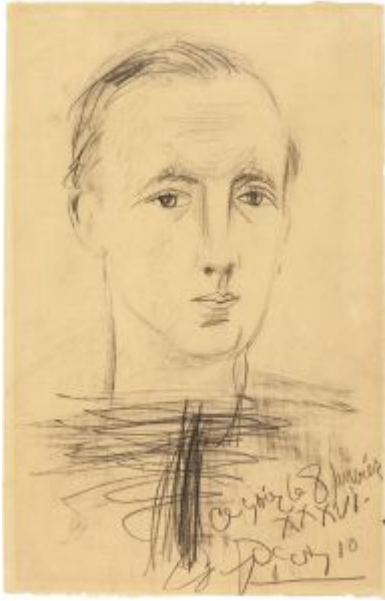
**elle et moi ....** Paris. 6-January/1936. Pen & India ink on envelope. 14,7 x 11,4 cm. Musée Picasso, Paris.

**OPP.36:416**; MPP:3663.121v

**donde miles de cables ...; ponerlo virgen ....** Paris. 7, 9-January/1936. Pen & India ink on Ingres d'Arches paper. 25,8 x 34,3 cm. Musée Picasso, Paris.

**OPP.36:482**; MPP:3663.122(1).05r





**Portrait de Paul Éluard (Paul Éluard, Les Yeux fertiles).**

Paris~Juan-les-Pins. 8-January/1936. Oil pencil on paper. 25 x 16,2 cm. Musée d'Art et d'Histoire Paul Éluard, Saint-Denis. (Inv NA.3947). Gift of Dominique Éluard, 1955.

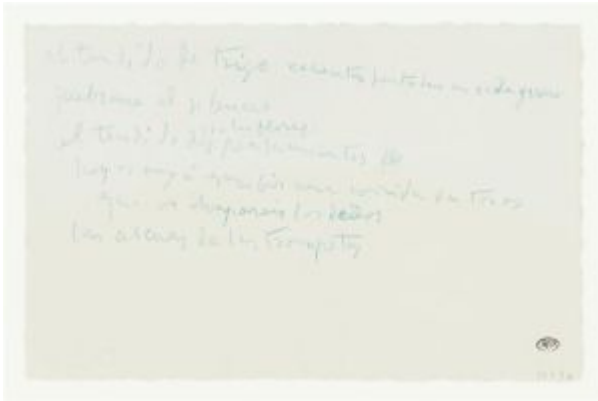
**OPP.36:165**; P.IV:736; PP.36:001; Z.VIII:273; BA.19c\*:10p; JL.71:247p; JR.21:865p; PD.93:35; PP.19:81p; RP.81:15.7; TB.10:151p; TO.04\*:41; WR.96:78p

**y en el tendido de trigo ....** Paris. 10-January/1936. Pen & India ink on Ingres d'Arches paper. 25,8 x 34,3 cm. Musée Picasso, Paris.

**OPP.36:239**; MPP:3663.122(1).09r; AM.08:172p





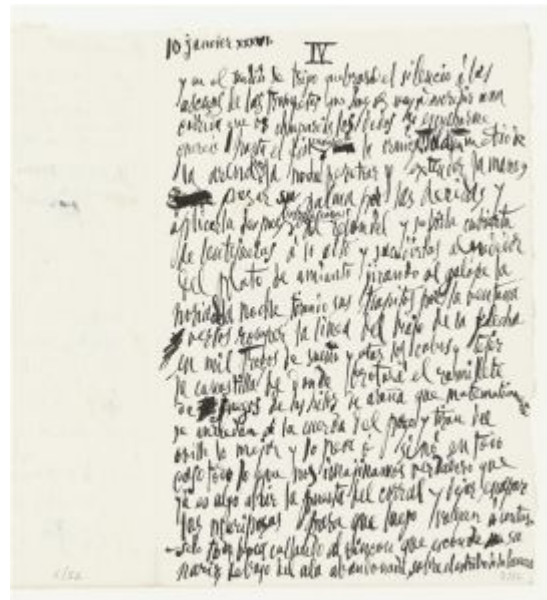


**el tendedo del trigo ....** Paris. 10-January/1936. Color pencil on beige paper. 13,5 x 21 cm. Musée Picasso, Paris.

**OPP.36:417**; MPP:3663.127r

**y en el tendedo de trigo ....** Paris. 10-January/1936. Pen & India ink on Ingres d'Arches paper. 25,8 x 34,3 cm. Musée Picasso, Paris.

**OPP.36:483**; MPP:3663.122(1).07r





**al quitasueño ...**. Paris. 11-January/1936. Pen & India ink on Ingres d'Arches paper. 25,8 x 34,3 cm. Musée Picasso, Paris.

**OPP.36:485**; MPP:3663.122(1).11r

**al quitasueño ....; por la cuchara ....**. Paris. 11, 12-January/1936. Pen & India ink on Ingres d'Arches paper. 25,8 x 34,3 cm. Musée Picasso, Paris.

**OPP.36:486**; MPP:3663.122(1).13r





**por la cuchara ... 1 2 3 4 5 ....** Paris. 12, 14-January/1936. Pen & India ink on Ingres d'Arches paper folded in two. 25,8 x 34,3 cm. Musée Picasso, Paris. Dation 1979.

**OPP.36:113**; MPP:3663.122(1).15r; CW.89:90p; PP.19:184p



**Minotaure et femme.** Paris. 13-January/1936. Pen & ink on paper. 25 x 19 cm. Private collection, Madrid.

**OPP.36:080**; FC.00\*:63



**Maternité.** Paris~Juan-les-Pins. 13-January/1936. India ink on paper. 35 x 26 cm. Maya Widmaier Picasso Collection, Paris.

**OPP.36:166**; P.IV:739; PP.36:002

---

**Minotaure et femme (René Char, Dépendance de l'adieu).** Paris. 13-January/1936. Reproduction [After *Minotaure et femme*]. 25 x 19 cm. The Museum of Modern Art, NYC. (Inv 972.1964). The Louis E. Stern Collection.

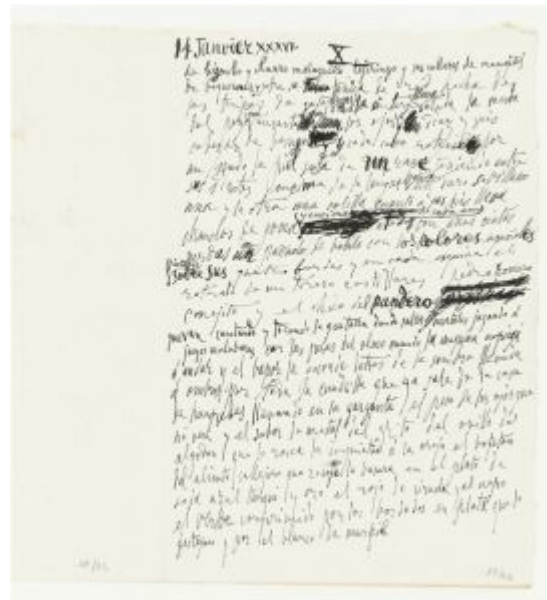
**OPP.36:338**; BS.55:53p; FP.73:286p; GD.77:55p; JL.71:249p; LG.81:464





**1 2 3 4 5 ...** Paris. 14-January/1936. Pen & India ink on Ingres d'Arches paper. 25,8 x 34,3 cm. Musée Picasso, Paris.

**OPP.36:487**; MPP:3663.122(1).17r



**1 2 3 4 5 ...** Paris. 14-January/1936. Pen & India ink on Ingres d'Arches paper. 25,8 x 34,3 cm. Musée Picasso, Paris.

**OPP.36:488**; MPP:3663.122(1).19r



**Taureau et deux chevaux.** Paris. 15-January/1936. Pen & India ink on paper. 17 x 25,5 cm. Marina Picasso Collection. (Inv 03815).  
Courtesy Galerie Jan Krugier, Geneva.

**OPP.36:065**; PP.36:003; MP.81\*:179;  
PA.93a\*:96; WR.80\*:332p

**Signature.** Paris. 15-January/1936. Ink on paper. S/U. Drouot.  
#1065, 150259, 03/14/24.

**OPP.36:584**





**Annotations.** Paris. [Mid-January]/1936. Graphite on squared beige vellum paper. 13,5 x 9.5 cm. Musée Picasso, Paris.

**OPP.36:484;** MPP:3663.9.88r

**escribe en la quijada ..., que si el nácar ....** Paris. 16, 17-  
January/1936. Pen & India ink on Ingres d'Arches paper  
folded in two. 25,8 x 34,3 cm. Musée Picasso, Paris. Dation  
1979.

**OPP.36:114;** MPP:3663.122(1).21r; AM.08:135p;  
CW.89:91p; PP.19:160p





**que si el nácar ..., y aparece el cantar ....** Paris. 17, 18-January/1935. Pen & India ink on Ingres d'Arches paper folded in two. 25,8 x 34,3 cm. Musée Picasso, Paris. Dation 1979.

**OPP.36:115**; MPP:3663.122(1).23r; BP.21:199p; CW.89:95p; PP.19:161p

**y de la mesa ....** Paris. 19-January/1936. Pen & India ink on Ingres d'Arches paper. 25,8 x 34,3 cm. Musée Picasso, Paris.

**OPP.36:489**; MPP:3663.122(1).25r

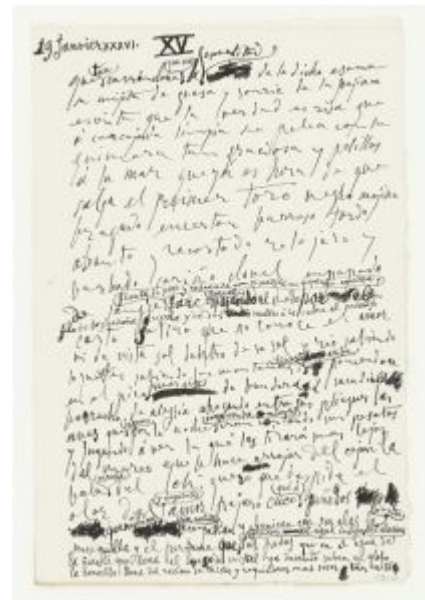






**y de la mesa.** Paris. 19-January/1936. Pen & India ink on Ingres d'Arches paper. 25,8 x 34,3 cm. Musée Picasso, Paris.

OPP.36:490; MPP:3663.122(1).27r



**y de la mesa ....** Paris. 19-January/1936. Pen & India ink on Ingres d'Arches paper. 25,8 x 34,3 cm. Musée Picasso, Paris.

OPP.36:491; MPP:3663.122(1).29r



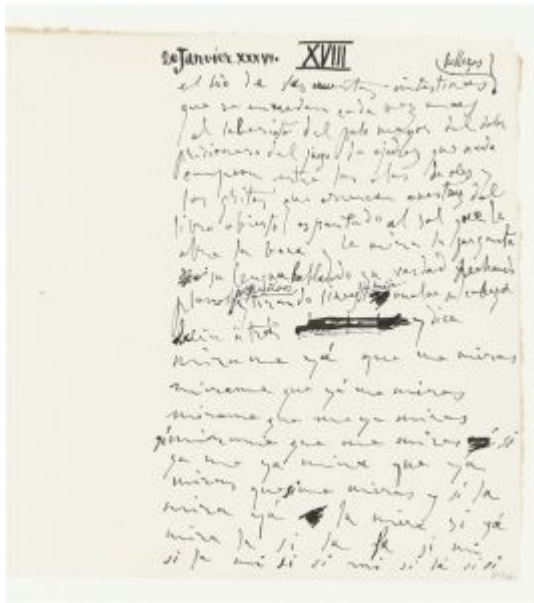
**y de la mesa .....** Paris. 19-January/1936. Pen & India ink on Ingres d'Arches paper. 25,8 x 34,3 cm. Musée Picasso, Paris.

**OPP.36:492**; MPP:3663.122(1).32r



**y de la mesa ... XVI; y al primer empujón ....** Paris. 19~20-January/1936. Pen & India ink on Ingres d'Arches paper. 25,8 x 34,3 cm. Musée Picasso, Paris.

**OPP.36:309**; MPP:3663.122(1).31r



**el lío de las cruentas ... XVIII.** Paris. 20-January/1936. Pen & India ink on Ingres d'Arches paper [Obverse of *el lío de las cruentas ... XVIII*]. 25,8 x 34,3 cm. Musée Picasso, Paris.

**OPP.36:238**; MPP:3663.122(1).35r; AM.08:171p

**barca tendida en la playa ... XIX.** Paris. 20-January/1936. Pen & India ink on Ingres d'Arches paper. 25,8 x 34,3 cm. Musée Picasso, Paris. Dation 1979.

**OPP.36:345**; MPP:3663.122(1).37r; PP.19:303p





**y al primer empujón ...** Paris. 20-January/1936. Pen & India ink on Ingres d'Arches paper. 25,8 x 34,3 cm. Musée Picasso, Paris.

**OPP.36:493**; MPP:3663.122(1).33r

**el lío de las cruentas ... XVIII.** Paris. 20-January/1936. Blank page [Reverse of *el lío de las cruentas ... XVIII*]. 25,8 x 34,3 cm. Musée Picasso, Paris.

**OPP.36:494**; MPP:3663.122(1).36r



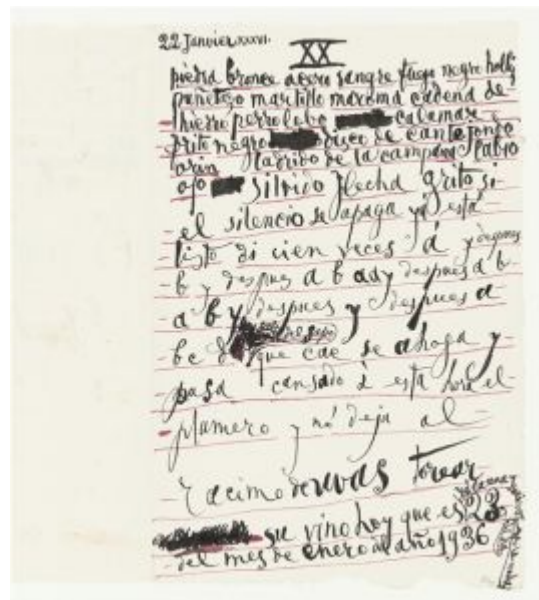


**Marie-Thérèse emmitoufflée allaitant Maya.** Paris. 22-January/1938. Pastel & India ink on paper. 26,7 x 20,4 cm. Private collection.

**OPP.36:035**; P.IV:740; RP.11\*:211p; WS.95a\*:93

**piedra bronce acero ....** Paris. 22-January/1936. Pen & India ink on Ingres d'Arches paper. 25,8 x 34,3 cm. Musée Picasso, Paris. Dation 1979.

**OPP.36:116**; MPP:3663.122(1).39r;  
MPP:3663.22/01/36; AM.08:93p; BP.21:205p;  
CW.89:96p; PP.19:17p





**sin orden ni medida ...** Paris. 26-January/1936. Pen & India ink on Ingres d'Arches paper. 25,8 x 34,3 cm. Musée Picasso, Paris.

**OPP.36:495**; MPP:3663.122(1).41r

**llueva al hilo ... (1)**. Paris. 27-January/1936 [6-January~2-February/1936]. Pencil on newsprint. 21 x 21,9 cm. Musée Picasso, Paris.

**OPP.36:219**; MPP:3663.122(3)r;  
AB.00\*:106; AM.08:44p





**llueva al hilo ... (2).** Paris. 27-January/1936. Pen & India ink on Ingres d'Arches paper. 25,8 x 34,3 cm. Musée Picasso, Paris.

**OPP.36:497;** MPP:3663.122(1).45r

**llueva al hilo ... (2); 225.818 cero ....** Paris. 27-January/1936. Pen & India ink on Ingres d'Arches paper. 25,8 x 34,3 cm. Musée Picasso, Paris.

**OPP.36:498;** MPP:3663.122(1).47r





**225.818 cero ..., l'amour est une ortie ..., otra vez el pico ....**  
Paris. 28-January ~ 1, 2-February/1936. Pen & India ink on Ingres  
d'Arches paper. 25,8 x 34,3 cm. Musée Picasso, Paris.

OPP.36:205; MPP:3663.122(1).51r; AM.08:355p; CW.89:396p

**l'amour est une ortie ... (2).** Paris. [31-  
January] 1-February/1936. Graphite on  
newsprint. 3,9 x 21,2 cm. Musée Picasso,  
Paris. Dation 1979.

OPP.36:220; MPP:3663.122(4)r;  
AB.00\*:107; AM.08:44p







**Otra vez el pico del toro ....** Paris. 1-February/1936. Graphite on newsprint. 3,9 x 21,2 cm. Musée Picasso, Paris.

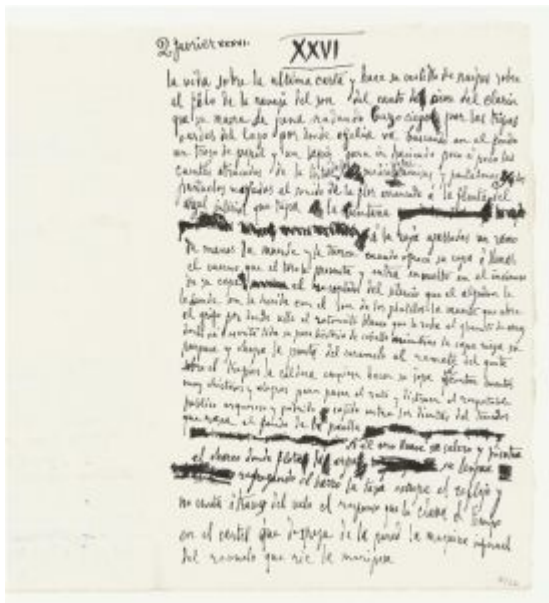
**OPP.36:281**; MPP:3663.122(4)v; AB.00\*:108

---

**Le cheval.** Paris. February~June/1936. Aquatint. 41,5 x 31,5 cm. Marina Picasso Collection. (Inv 22706). Courtesy Galerie Jan Krugier, Geneva.

**OPP.36:249**; GS.85\*:70a





**otra vez el pico ... (2).** Paris. 2-February/1936. Pen & India ink on Ingres d'Arches paper. 25,8 x 34,3 cm. Musée Picasso, Paris.

OPP.36:461; MPP:3663.122(1).52r

**si la fleur inscrit ... (2).** Paris. 3-February/1936. India ink on Arches paper. 25,9 x 11,9 cm. Musée Picasso, Paris.

OPP.36:221; MPP:3663.129r; AM.08:45p



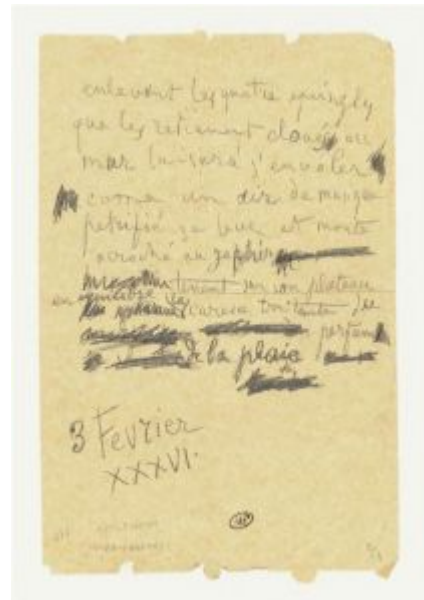


**si la fleur inscrit ... (1)**. Paris. 3-February/1936. Graphite on toilet paper. 18,5 x 11,9 cm. Musée Picasso, Paris. Dation 1979.

**OPP.36:228**; MPP:3663.128.01r; AM.08:54p; PP.19:162p

**si la fleur inscrit ... (1)**. Paris. 3-February/1936. Graphite on toilet paper. 18,5 x 11,9 cm. Musée Picasso, Paris. Dation 1979.

**OPP.36:229**; MPP:3663.128.03r; AM.08:55p; PP.19:163p





**la rage de dents ..., à telle heure étendue ... (2)**. Paris. 6, 10-February/1936. Pen & India ink on Ingres d'Arches paper. 26,2 x 34,6 cm. Musée Picasso, Paris.

OPP.36:117; MPP:3663.130r; CW.89:103p



**Le coq (II)**. Paris. 7-February/1936. Aquatint & scraping on Montval Vergé paper. 41,2 x 31,2 cm. Musée Picasso, Paris.

OPP.36:334; Ba:591.2; MPP:2936



**Le pigeon.** Paris. 7-February/1936. Aquatint, scraper & drypoint. 41,9 x 31,5 cm. Musée Picasso, Paris.

**OPP.36:561**; Ba:594; MPP:2939

**Paysage de montagne.** Paris. 8-February/1936. Aquatint & scraping on Montval Vélín paper. 26,7 x 19,7 cm. Musée Picasso, Paris. Dation 1979.

**OPP.36:331**; MPP:2739





**L'Âne (IV)**. Paris. 9-February/1936. Aquatint, scraper & drypoint. 41,5 x 31,5 cm. Musée Picasso, Paris.

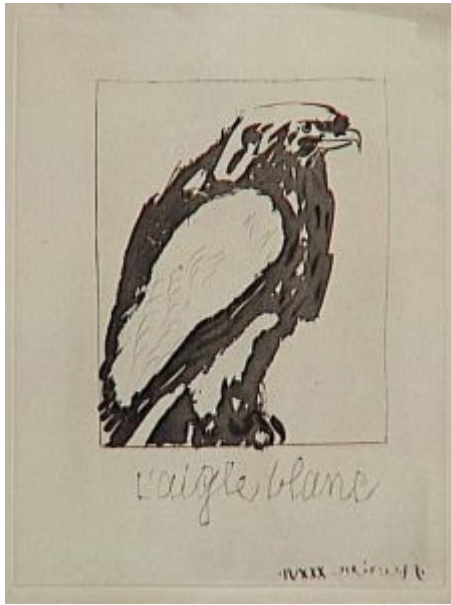
**OPP.36:543**; Ba:576.4; MPP:2921

---

**Le singe (II)**. Paris. 9-February/1936. Aquatint, scraper & drypoint. 41,8 x 31,5 cm. Musée Picasso, Paris.

**OPP.36:553**; Ba:586.2; MPP:2931





**L'aigle blanc.** Paris. 9-February/1936. Aquatint, scraper & drypoint. 41,6 x 31,5 cm. Musée Picasso, Paris.

**OPP.36:554;** Ba:587; MPP:2932

---

**à telle heure étendue ... (1).** Paris. 10-February/1936. Graphite on paper. 27,1 x 21 cm. Musée Picasso, Paris. Dation 1979.

**OPP.36:235;** MPP:3663.131r; AM.08:160p; PP.19:157p





**à telle heure étendue ... (3).** Paris. 10~12-February/1936. India ink. S/U. Musée Picasso, Paris.

**OPP.36:207**; CW.89:396p

**à telle heure étendue ....** Paris. 10~12-February/1936. Typescript on paper. 27 x 20,9 cm. Musée Picasso, Paris.

**OPP.36:421**; MPP:3663.133r







**à telle heure étendue ....** Paris. 10~12-February/1936.  
Typescript on paper. 26,8 x 20,6 cm. Musée Picasso, Paris.

**OPP.36:422**; MPP:3663.134r

**à telle heure étendue ....** Paris. 10~12-February/1936. Typescript on paper. 26,8 x 20,6 cm.  
Musée Picasso, Paris.

**OPP.36:423**; MPP:3663.134v





**à telle heure étendue ...** Paris. 10~12-February/1936.  
Typescript on paper. 27,1 x 21 cm. Musée Picasso, Paris.

**OPP.36:424**; MPP:3663.135r

**à telle heure étendue ...** Paris. 10~12-February/1936. Typescript on paper. 27,1 x 21 cm.  
Musée Picasso, Paris.

**OPP.36:425**; MPP:3663.135v



**Résumé xxvi**  
 I  
 Grande le cristal se reflète  
 bien étendue sur l'écriture toute  
 de l'écriture technique est  
 l'écriture qui se passe de  
 son geste et se reflète  
 à travers le verre et la  
 lumière  
 II  
 autour du disque regardant  
 le cristal se reflète  
 l'écriture qui se passe  
 de son geste et se reflète  
 à travers le verre et la  
 lumière  
 III  
 Si autour des cercles que  
 l'écriture se reflète  
 l'écriture qui se passe  
 de son geste et se reflète  
 à travers le verre et la  
 lumière  
 Picasso

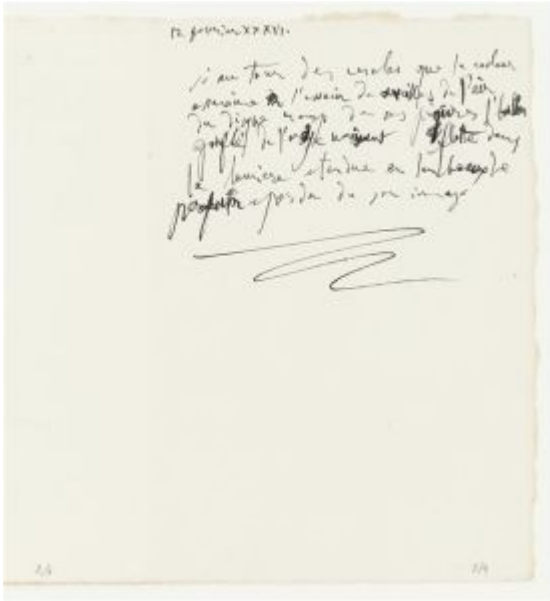
**à telle heure étendue ... (3).** Paris. 12-February/1936. India ink. S/U. Musée Picasso, Paris.

**OPP.36:208;** CW.89:396p

**à telle heure étendue ... (2).** Paris. 12-February/1936. Pen & India ink on paper. 25,7 x 34,7 cm. Musée Picasso, Paris.

**OPP.36:451;** MPP:3663.132.01r

Résumé xxvi  
 Grande le cristal se reflète  
 bien étendue sur l'écriture toute  
 de l'écriture technique est  
 l'écriture qui se passe de  
 son geste et se reflète  
 à travers le verre et la  
 lumière  
 II  
 autour du disque regardant  
 le cristal se reflète  
 l'écriture qui se passe  
 de son geste et se reflète  
 à travers le verre et la  
 lumière  
 III  
 Si autour des cercles que  
 l'écriture se reflète  
 l'écriture qui se passe  
 de son geste et se reflète  
 à travers le verre et la  
 lumière  
 Picasso



**à telle heure étendue ... (2)**. Paris. 12-February/1936. Pen & India ink on paper. 25,7 x 34,7 cm. Musée Picasso, Paris.

**OPP.36:452**; MPP:3663.132.03r

**Vase de fleurs**. Paris. 21-February/1936. Colored crayon & watercolor on paper. 25,5 x 17,2 cm. Sotheby's. #116, L20005, 02/19/20. Formerly Marina Picasso Collection.

**OPP.36:340**



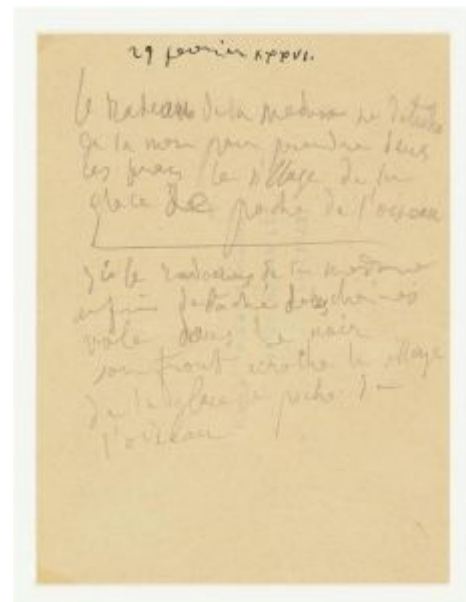


**Ilueva al hilo ... (2).** Paris. 27-February/1936. Pen & India ink on Ingres d'Arches paper. 25,8 x 34,3 cm. Musée Picasso, Paris.

**OPP.36:496**; MPP:3663.122(1).43r

**le radeau de la méduse ... (1).** Paris. 29-February/1936. India ink & graphite on back of envelope [Obverse of *le radeau de la méduse ... (1)*]. 27,1 x 21 cm. Musée Picasso, Paris. Dation 1979.

**OPP.36:243**; MPP:3663.136r; AM.08:238p; PP.19:132p





**le radeau de la méduse ... (2)**. Paris. 29-February/1936. India ink on Arches paper. 25,9 x 17,4 cm. Musée Picasso, Paris. Dation 1979.

**OPP.36:244**; MPP:3663.137r; AM.08:239p; PP.19:133p

**le radeau de la méduse ... (1)**. Paris. 29-February/1936. Pen & India ink & graphite on beige paper [Reverse of *le radeau de la méduse ... (1)*]. 27,1 x 21 cm. Musée Picasso, Paris.

**OPP.36:460**; MPP:3663.136v





**Le radeau de la méduse ....** Paris. 29-February/1936.  
Typescript on Montval Vergé paper. 26,7 x 20,5 cm. Musée  
Picasso, Paris.

**OPP.36:390**; MPP:3663.138r

**Le radeau de la méduse ....** Paris. 29-February/1936.  
Typescript on paper. 26,8 x 20,9 cm. Musée Picasso,  
Paris.

**OPP.36:391**; MPP:3663.139r





**Le radeau de la méduse ...** Paris. 29-February/1936.  
Typescript on paper. 27,9 x 20,9 cm. Musée Picasso, Paris.

**OPP.36:392**; MPP:3663.140r

**ensarta el hilo ....** Paris. March/1936. Typescript on  
paper. 26,7 x 20,5 cm. Musée Picasso, Paris.

**OPP.36:426**; MPP:3663.143r







**ensarta el hilo ... (1); à coups de cloche ... (1).** Paris. 3~8-March/1936. Pen & India ink on paper. 25,7 x 34,5 cm. Musée Picasso, Paris.

OPP.36:465; MPP:3663.141.01r

**ensarta el hilo ....** Paris. 3-March/1936. Typescript on paper. 27 x 21 cm. Musée Picasso, Paris.

OPP.36:393; MPP:3663.142r





**ensarta el hilo ....** Paris. 3-March/1936. Typescript on paper. 27,1 x 21 cm. Musée Picasso, Paris.

**OPP.36:396**; MPP:3663.147r

**ensarta el hilo ....** Paris. 3~8-March/1936. Typescript on paper. 27 x 21 cm. Musée Picasso, Paris.

**OPP.36:427**; MPP:3663.144r





**ensarta el hilo ....** Paris. 3~17-March/1936. Typescript on paper. 27 x 21 cm. Musée Picasso, Paris.

**OPP.36:428**; MPP:3663.147.01r

**ensarta el hilo ....** Paris. 3~17-March/1936. Typescript on paper. 27 x 21 cm. Musée Picasso, Paris.

**OPP.36:429**; MPP:3663.147.03r





**ensarta el hilo ....** Paris. 3~17-March/1936. Typescript on paper. 27 x 21 cm. Musée Picasso, Paris.

**OPP.36:430**; MPP:3663.147.05r

---

**ensarta el hilo ....** Paris. 3~17-March/1936.  
Typescript on paper. 27 x 21 cm. Musée Picasso, Paris.

**OPP.36:431**; MPP:3663.147.07r





**Sabartés tú que conoces ... (1); la râpe la tenaille ... (1).** Paris. 9, 17-March/1936. Pen & India ink on paper. 25,7 x 34,5 cm. Musée Picasso, Paris.

OPP.36:466; MPP:3663.141.03r

**Le crayon qui parle ....** Paris. [11-January] 11-March/1936. Watercolor, pastel, color crayon, ink & pasted paper. 33,6 x 50,8 cm. Riane Gruss Collection, NY. Formerly Roland Penrose Collection, London; Paul Éluard Collection.

OPP.36:118; P.IV:737; BA.19c:203p; BP.21:210-211p; CW.89:105p; GG.87:92p; JR.21:n/p; LO.36b\*:n/a; MA.17\*:138p; RJ.03:151; SS.76:313; TC.13:6.16





**Portrait de Dora Maar de profil.** Boisgeloup. Spring/1936. Gelatin silver print. 24 x 18,2 cm. Musée Picasso, Paris. (Inv AP.PH.15320).

---

**OPP.36:269**; AB.00\*:136; AB.06\*:20; LO.19b\*:159; PP.20\*:323

**Portrait de Dora Maar de face.** Boisgeloup. Spring/1936. Gelatin silver print. 24 x 18 cm. Musée Picasso, Paris. (Inv AP.PH.13880).

---

**OPP.36:271**; AB.06\*:22





**Portrait de Dora Maar de trois quarts.** Boisgeloup. Spring/1936. Gelatin silver print. 24 x 18,2 cm. Musée Picasso, Paris. (Inv AP.PH.15319).

**OPP.36:273**; AB.06\*:25; RU.17\*:21

**muyercaapocoskilómetros ....** Paris. Spring/19036. Typescript in black ink on paper. 27 x 21 cm. Musée Picasso, Paris.

**OPP.36:280**; MPP:3663.6r; AB.00\*:105



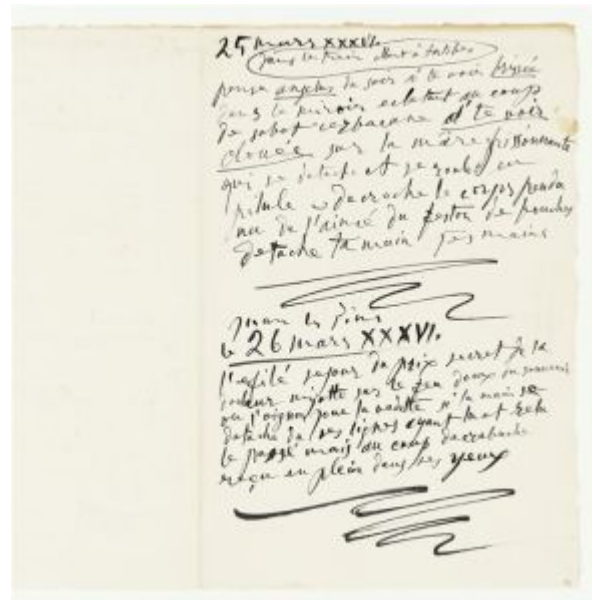


**miette de pain ... (1), pot scie ma lady ... (1).** Paris. 22, 24-March/1936. India ink on Ingres Arches paper. [25 x 17,5] 25,5 x 17,4 cm. Musée Picasso, Paris. Dation 1979.

**OPP.36:119**; MPP:3663.101; MPP:3663.148.01r; AM.05:44p; AM.08:144p; BP.21:214p; CW.89:107p; ND.01:19p; PP.19:46p; PP.20\*:183

**pense angelus du soir ... (1); l'effilé séjour ... (1).** Paris. 25~26-March/1936. Pen & India ink on Ingres d'Arches paper. 25 x 34,5 cm. Musée Picasso, Paris.

**OPP.36:312**; MPP:3663.148.03r







**personnages salariés du drame ... (1).** Juan-les-Pins. 29-March/1936. India ink & pen on Arches paper folded in two. 25,6 x 35 cm. Musée Picasso, Paris. Dation 1979.

**OPP.36:120**; MPP:3663.149.03r;  
MPP:3663.1936.54; AM.05:48p; AM.08:77p;  
CW.89:108p; PP.19:194p

**personnages salariés du drame ... (1).** Paris. 29-March/1936. India ink & pen on Arches paper folded in two. 25,6 x 35 cm. Musée Picasso, Paris. Dation 1979.

**OPP.36:230**; MPP:3663.149.01r; AM.08:76p; PP.19:150p





**personnages salariés du drame ....** Paris. 29-March/1936.  
Typescript on paper. 27,2 x 21,1 cm. Musée Picasso, Paris.

**OPP.36:397**; MPP:3663.150.01r



**personnages salariés du drame ....** Paris. 29-March/1936. Typescript on paper. 27,2 x 21,1 cm. Musée Picasso, Paris.

**OPP.36:398**; MPP:3663.150.03r



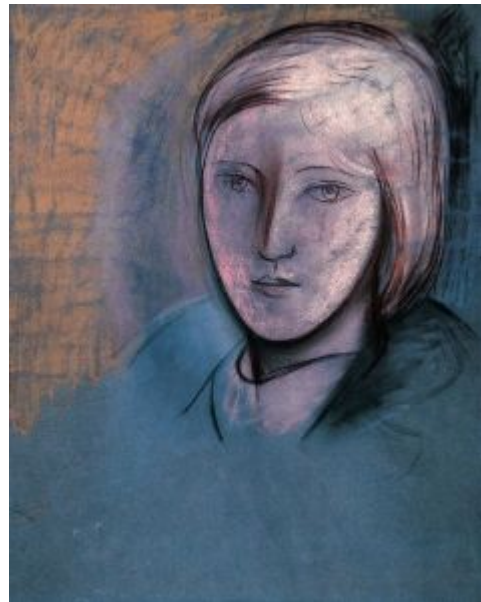
**Vase de fleurs et deux oiseaux.** Paris. 1-April/1936. Paper cut-out, colored with crayons. 21 x 30 cm. Artcurial. #304, 1050, 10/30/06.

**OPP.36:215**

---

**Portrait de Marie-Thérèse Walter.** [Juan-les-Pins]. [April]/1936. Pastel on paper. S/U. Private collection.

**OPP.36:038**





**Marie-Thérèse l'allaitement Maya dans Villa Saint-Geneviève.** Juan-les-Pins. [March] April/1936. Photograph. S/U. Private collection.

**OPP.36:253**; JP.11a:21p; JR.21:95p; WW.94\*:123

---

**Tête de femme.** Juan-les-Pins. 2-April/1936. Oil & black chalk (pencil & oil wash) on canvas. 55 x 46 cm. The Picasso Estate.

**OPP.36:023**; P.IV:744; PP.36:004; AN.18\*:74; DD.61:81p





**Feuille d'études: profils de Marie-Thérèse.** Juan-les-Pins. 2-April/1936. India ink & pen on laid paper. 26 x 17.5 cm. Musée Picasso, Paris. Dation 1979.

**OPP.36:121**; MPP:1148.r; P.IV:748; PP.36:005; AM.08:107p; CW.89:111p; MS.02\*:n/a; PD.06\*:256p; PP.19:211p; RP.11:73p

**Portrait de jeune fille (Marie-Thérèse).** Juan-les-Pins. 3-April/1936. Oil on canvas. 55,5 x 46 cm. Musée Picasso, Paris. Dation 1979.

**OPP.36:028**; MPP:150; P.IV:745; PP.36:007; AB.05a\*:97; AB.06:211p; AM.08:101p; AN.18\*:76; BP.21:665p; BU.22\*:130; DD.61:82p; JO.06\*:n/a; JR.21:n/p; MA.08a\*:n/a; MB.06\*:n/a; MP.85:128; PA.18e:67p; PA.19e\*:46; PA.79a\*:249; PP.19:214p; TK.04\*:n/a; UW.91\*:90; WR.96:371p





**anda y que cante ... (1), l'étoile du berger ... (1).** Juan-les-Pins.  
3-April/1936. Ink. 26 x 17.5 cm. Musée Picasso, Paris.

OPP.36:122; MPP:1150.v; AM.08:108p; CW.89:112p

**Étude pour Portrait de jeune fille (Marie-Thérèse lisant).** Juan-les-Pins. 3-April/1936. Pen & India ink on a laid paper folded in two [Obverse of *oro del grifo ... (1)*]. 26 x 17,5 cm. Musée Picasso, Paris. Dation 1979.

OPP.36:123; MPP:1149.r; P.IV:749; PP.36:006;  
AM.08:109p; AN.18\*:75; BP.21:216p; CW.89:114p;  
MP.88:1035; PA.18e:66p; PP.19:212p; RP.11:73p;  
WR.96:370p





**oro del grifo ... (1).** Juan-les-Pins. 3-April/1936. India ink on Vergé paper [Reverse of *Étude pour Portrait de jeune fille (Marie-Thérèse lisant)*]. 25,6 x 17,5 cm. Musée Picasso, Paris. Dation 1979.

**OPP.36:124;** MPP:1149.v; AM.08:110p; BP.21:217p; CW.89:115p; PP.19:213p

**Lettre manuscrite à Max Pellequer.**

Juan-les-Pins. 3-April/1936. Ink on paper.  
S/U. Piasa. #40, 2142, 02/15/24. Formerly  
Max Pellequer Collection.

**OPP.36:582**



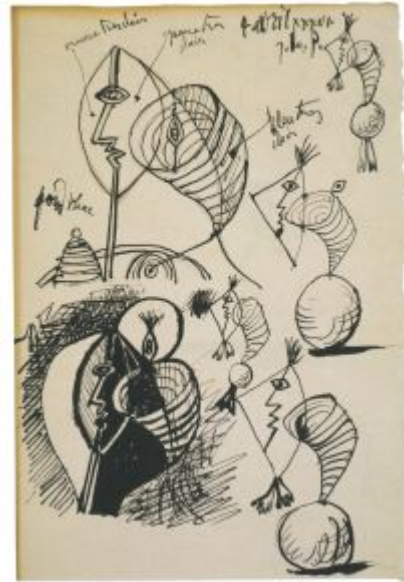


**Portrait de jeune fille.** Juan-les-Pins. 4-April/1936. Oil & pencil on canvas. 46 x 38 cm. The Picasso Estate.

**OPP.36:029**; P.IV:743; PP.36:010; DD.61:83p; UP.00:724

**Portrait de jeune fille avec annotations manuscrites de couleurs.** Juan-les-Pins. 4-April/1936. India ink on laid paper folded in two. [26 x 17,4 ] 25,7 x 17,2 cm. Musée Picasso, Paris. Dation 1979.

**OPP.36:125**; MPP:1150.r.p1; P.IV:742; PP.36:008; AM.08:105p; AN.18\*:77; CW.89:116p; JO.06\*:n/a; MP.88:1036; PP.19:215p; UP.00:726; WR.96:370p







**Portrait of young girl ... (1) (2).** Juan-les-Pins. 4-April/1936.  
India ink & pen on laid paper. 28 x 17,4 cm. Musée Picasso, Paris.  
Dation 1979.

**OPP.36:126;** MPP:1150.v.p3; P.IV:746; PP.36:009; AM.05:50p;  
BP.21:219p; CW.89:117p; JO.06\*:n/a; MR.13:36p; PA.21g\*:276p;  
PP.19:216p; UP.00:727

**sapajou couleur lilas ... (1).** Paris. 4-April/1936. India  
ink on Arches paper. 25,9 x 34,6 cm. Musée Picasso, Paris.

**OPP.36:231;** MPP:3663.151.01r; AM.08:102p





**sapajou couleur lilas ... (1)**. Paris. 4-April/1936.  
India ink on Arches paper. 25,9 x 34,6 cm. Musée  
Picasso, Paris.

**OPP.36:232**; MPP:3663.151.03r; AM.08:103p

**sapajou couleur lilas ... (1)**. Paris. 4-April/1936. Pen &  
India ink on paper. 25,9 x 34,6 cm. Musée Picasso, Paris.

**OPP.36:453**; MPP:3663.151.02r





**sapajou couleur lilas ...** Paris. 4-April/1936. Typescript on paper. 27,2 x 21,1 cm. Musée Picasso, Paris.

**OPP.36:399**; MPP:3663.152r

**Personnage au coquillage.** Juan-les-Pins. 5-April/1936. Oil, black chalk & color pencil on canvas. 46 x 38 cm. Fundación Almine & Bernard Ruiz-Picasso para el Arte. (Inv 12709).

**OPP.36:030**; P.IV:747; PP.36:011; AN.18\*:78; BA.03a\*:167; BP.21:666p; CG.04\*:18; DD.61:85p; GA.00\*:55; MG.04b\*:73; PA.89a\*:n/a; PP.19:217p; UP.00:725; YB.08\*:71





**Minotaure emmenant une jument et son poulain dans une charette.** Juan-les-Pins. 5-April/1936. Pen & India ink on vellum paper. 50,2 x 65,6 cm. Musée Picasso, Paris. Dation 1979.

**OPP.36:067**; MPP:1151; P.IV:750; PP.36:012; Z.VIII:276; AB.06:112p; CK.04\*:58; EM.55:159p; GG.87:51p; GP.96:210p; HC.88:6.2; MB.06\*:n/a; MN.80\*:n/a; PA.17b\*:138; PA.79a\*:528; PE.00\*:54; PP.19:188p; RJ.03:134; UP.00:730; UW.84:78p; WR.80\*:323p

---

**Minotaure à la carriole.** Juan-les-Pins. 6-April/1936. Oil on canvas. 45,5 x 54,5 cm. Private collection.

**OPP.36:005**; P.IV:751; PP.36:013; AB.06\*:40; AN.18\*:79; BP.21:842p; DD.61:86p; DP.20:232p; GG.87:51p; GG.93:17; HC.88:6.53; JP.07:37p; JP.79:29p; JR.21:n/p; MF.06\*:160; MR.13\*:47; MS.04:51p; PE.00\*:55; RP.11:39p; SS.76:254; UP.00:729





**Homme au masque, femme et enfant dans son berceau.** Juan-les-Pins. 7-April/1936. Pen, India ink & tinted wash on paper. 50 x 65,5 cm. Musée Picasso, Paris. Dation 1979.

**OPP.36:072**; MPP:1152; P.IV:752; PP.36:014; Z.VIII:279; AN.18\*:81; BP.21:839p; GG.87:50p; IB.05\*:n/a; JL.67b:66p; JL.71:247p; LG.81:467; MB.06\*:n/a; ME.82a\*:71; MS.04\*:n/a; PA.79a\*:529; PP.19:201p; SS.76:256; UW.84:82p; WS.94:70p; WS.95a\*:98

**Pêcheur et femme au bord de la mer.** Juan-les-Pins. 7-April/1936. India ink wash. 50 x 65 cm. Private collection.

**OPP.36:073**; P.IV:753; PP.36:015; Z.VIII:280; EM.55:195p; MM.04\*:149p; MS.04\*:n/a; UP.00:737





**Visage de femme: Marie-Thérèse.** Paris. 7-Avril/1936.  
India ink & pencil on cardboard. 15 x 12 cm. Private collection.

**OPP.36:306**; AN.18\*:80; MG.04b\*:72

**binocle cloué ... (1) (2).** Juan-les-Pins. 8-Avril/1936.  
India ink on Arches paper. 25,8 x 34,6 cm. Musée Picasso, Paris.

**OPP.36:241**; MPP:3663.153.01r; AM.08:235p





**binocle cloué ... (2).** Juan-les-Pins. 8-April/1936.  
India ink on Arches paper. 25,8 x 34,6 cm. Musée  
Picasso, Paris.

OPP.36:242; MPP:3663.153.03r; AM.08:236

**binocle cloué par les flèches ....** Paris. 8-April/1936.  
Typescript on paper. 27,2 x 21,1 cm. Musée Picasso,  
Paris.

OPP.36:400; MPP:3663.154.02r





**binocle cloué par les flèches ....** Paris. 8-April/1936.  
Typescript on paper. 27,2 x 21,1 cm. Musée Picasso, Paris.

**OPP.36:401**; MPP:3663.154.03r

**Femme au buffet.** Juan-les-Pins. 9-April/1936. Oil  
on canvas. 55 x 46 cm. Musée Picasso, Paris. Dation  
1979.

**OPP.36:014**; MPP:151; P.IV:756; PP.36:016;  
AN.18\*:82; DD.61:88p; JR.21:94p; MA.08a\*:n/a;  
MP.85:129; PA.79a\*:250; PP.19:218p; WW.91:369p







**c'est le ton vert amande ... (1).** Juan-les-Pins. 9-April/1936. Ink. S/U. Musée Picasso, Paris.

**OPP.36:128**; AM.08:112p; CW.89:121p

**Minotaure et femme.** Juan-les-Pins. 10-April/1936. Pencil & India ink with crushed petals. 50 x 66 cm. Marina Picasso Collection. (Inv 03868). Courtesy Galerie Jan Krugier, Geneva.

**OPP.36:037**; P.IV:755; PP.36:018;  
Z.VIII:282; GG.87:52p; MP.81\*:184;  
PE.00\*:56





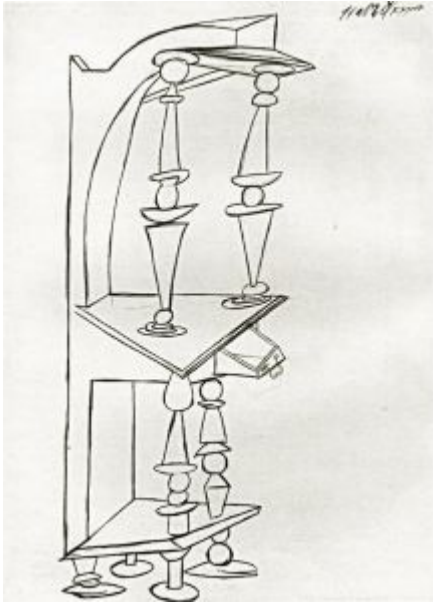
**Femme devant un dressoir et poème en français: seul soleil rage de dents ... (1)**. Juan-les-Pins. 10-April/1936. Pen & India ink on laid paper. 25,8 x 17,4 cm. Musée Picasso, Paris. Dation 1979.

**OPP.36:127**; MPP:1147.r; P.IV:758; PP.36:017; AM.08:111p; BP.21:222p; CW.89:120p; EC.02:591; JC.01\*:n/a; KB.04:50p; PP.19:232p

**Femme devant une coiffeuse**. Juan-les-Pins. 11-April/1936. Oil on canvas. 61 x 50 [50,3] cm. Michelle Rosenfeld Gallery. 2007.

**OPP.36:015**; P.IV:760; PP.36:019; DD.61:89p; GA.00\*:56



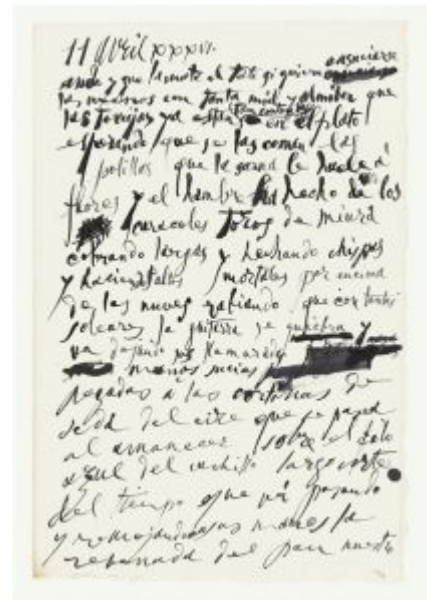


**Coiffeuse.** Juan-les-Pins. 11-April/1936. Pencil. 64 x 48 cm. Private collection.

**OPP.36:167**; P.IV:757; PP.36:020; Z.VIII:274

**anda y que la mate el tato ... (1).** Paris. 11-April/1936. India ink on Arches paper. 26,1 x 34,8 cm. Musée Picasso, Paris.

**OPP.36:245**; MPP:3663.155.01r; AM.08:277p





**anda y que la mate el tato ... (1)**. Paris. 11-April/1936. India ink on Arches paper. 26,1 x 34,8 cm. Musée Picasso, Paris.

**OPP.36:246**; MPP:3663.155.03r; AM.08:278p

**anda y que la mate el tato ....** Paris. 11-April/1936. Typescript on paper. 27,2 x 21,1 cm. Musée Picasso, Paris.

**OPP.36:402**; MPP:3663.154.01r





**Nu devant un dressoir.** Juan-les-Pins. 12-Avril/1936. Pencil on paper. 65,6 x 50 cm. Musée Picasso, Paris. Dation 1979.

**OPP.36:096**; MPP:1153; P.IV:759; PP.36:021; Z.VIII:275; AB.05a\*:59; BA.03a\*:168; HJ.96:57p; JC.01a\*:182; MA.08a\*:n/a; MM.04\*:173p; MN.80\*:n/a; MS.04\*:n/a; PP.19:219p; SD.05\*:61; TK.04\*:n/a; WR.80\*:331p

**salle à ne manger ... (1).** Juan-les-Pins. 12-Avril/1936. India ink on Arches paper. 25,7 x 34,2 cm. Musée Picasso, Paris.

**OPP.36:106**; MPP:3663.157.01r; AM.08:279p





**salle à ne manger ... (2).** Juan-les-Pins. 12-April/1936. India ink on Arches paper. 26 x 34,4 cm. Musée Picasso, Paris.

**OPP.36:226**; MPP:3663.158.01r; AM.08:281p



**salle à ne manger ... (1).** Juan-les-Pins. 12-April/1936. India ink on Arches paper. 25,7 x 34,2 cm. Musée Picasso, Paris.

**OPP.36:227**; MPP:3663.157.03r; AM.08:280p



**salle à ne manger que de la merde ...; minuscule barque  
faites avec des clous de girofle ....** Paris. 12~13-  
April/1936. Typescript on paper. 27,1 x 21,1 cm. Musée  
Picasso, Paris.

**OPP.36:432; MPP:3663.159.01r**

**salle à ne manger que de la merde ...; minuscule  
barque faites avec des clous de girofle ....** Paris.  
12~13-April/1936. Typescript on paper. 27,1 x 21,1  
cm. Musée Picasso, Paris.

**OPP.36:433; MPP:3663.159.03r**





**Buste de femme.** Juan-les-Pins. 13-April/1936. Oil on canvas. 55 x 46 cm. Sotheby's. #50, HK0852, 03/29-04/02/19.

**OPP.36:016**; P.IV:762; PP.36:022; DD.61:93p; WW.91:372

**Tête de femme à la fenêtre (Marie-Thérèse).** Juan-les-Pins. 13-April/1936. Oil on canvas. 55 x 45,7 cm. Sotheby's. #17, N08898, 11/05/12.

**OPP.36:017**; P.IV:761; PP.36:023; DD.61:90p; WR.96\*:369p







**minuscule barque ... (1) (2).** Juan-les-Pins. 13-April/1936. India ink on Ingres d'Arches paper. 26 x 34,4 cm. Musée Picasso, Paris.

**OPP.36:129**; MPP:3663.158.03r; AM.08:282p; CW.89:123p

**Colombe avec monogramme**  
**M.T.W.P.C.**. Juan-les-Pins. [14] 1-April/1936. Découpage with traces of watercolor mounted on black paper. 16 cm. Sotheby's. #523, L04006, 02/04/04.

**OPP.36:086**; MS.04:33p; RP.11\*:244p





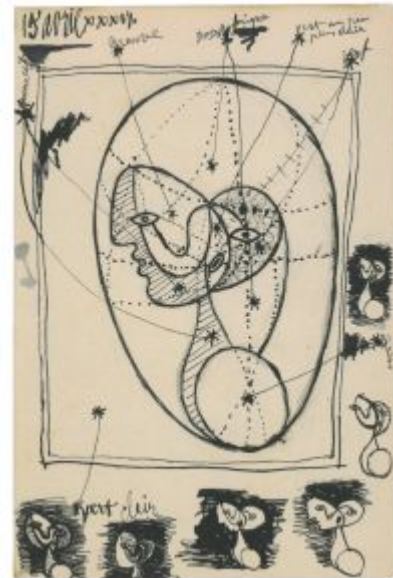
**Buste de femme.** Juan-les-Pins. 15-April/1936. Oil on canvas. 61 x 50 cm. Marina Picasso Collection. (Inv 12714). Courtesy Galerie Jan Krugier, Geneva.

**OPP.36:018**; P.IV:765; PP.36:024; DD.61:95p; GS.85\*:71; KB.99\*:16; PD.02\*:63; WW.91:372p

---

**Buste de femme.** Juan-les-Pins. 15-April/1936. India ink on pencil outlines on a sheet folded in two. 26 x 17,2 cm. Musée Picasso, Paris. Dation 1979.

**OPP.36:168**; MPP:1154.r.p1; P.IV:764; PP.36:025; AM.08:104p; AN.18\*:83; PD.06\*:n/a; PP.19:220p





**Femme.** Juan-les-Pins. 15-April/1936. Pencil on a sheet folded in two. 26 x 17,2 cm. Musée Picasso, Paris. Dation 1979.

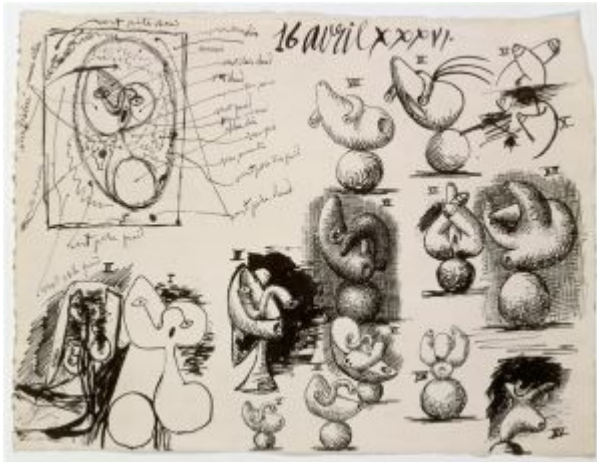
**OPP.36:169**; MPP:1154.v.p3; P.IV:763; PP.36:026; PD.06\*:n/a

---

**Nature morte.** Juan-les-Pins. 16-April/1936. Oil on canvas. 73 x 60 cm. The Picasso Estate.

**OPP.36:019**; P.IV:767; PP.36:028; DD.61:97p





**Feuille d'études: tête de femme.** Juan-les-Pins. 16-April/1936. Pen & India ink on laid paper with colored handwritten annotations. 26,5 x 34 cm. Musée Picasso, Paris. Dation 1979.

**OPP.36:057**; MPP:1155; P.IV:766; PP.36:027; Z.VIII:283; AB.05a\*:n/a; AB.69:2c; AM.08:106p; BA.03a\*:169; HC.88:6.68; JB.65:93; JC.01a\*:184; LU.93:77; PP.19:222-223p; TG.94\*:72; UW.91\*:91

**Femme au bouquet.** Juan-les-Pins. 17-April/1936. Oil on canvas. 73 x 60,3 [60] cm. Michael and Judy Steinhardt Collection, NY. Formerly Catherine Hutin-Blay Collection, Paris; Jacqueline Roque Picasso Collection.

**OPP.36:020**; P.IV:771; PP.36:029; DD.61:98p; GL.89\*:6; MI.01\*:86; WW.91:373p





**Femme au bouquet (Étude)**. Juan-les-Pins. 17~18-April/1936. Pen & India ink on pencil outlines on a sheet. 52,7 x 17,4. Musée Picasso, Paris. Dation 1979.

**OPP.36:170**; MPP:1156.r.p1; P.IV:770; PP.36:030; PD.06\*:n/a; PP.19:221p

**Femme au bouquet (Étude)**. Juan-les-Pins. 18-April/1936. Pen & India ink on pencil outlines on a sheet. 52,7 x 17,4 cm. Musée Picasso, Paris. Dation 1979.

**OPP.36:171**; MPP:1156.v.p3; P.IV:772; PP.36:031; PD.06\*:n/a





**songe d'une nuit d'été ... (1)**. Paris. 19-April/1936. India ink on Arches paper. 25,6 x 34,4 cm. Musée Picasso, Paris.

**OPP.36:224**; MPP:3663.160.03r; AM.08:284p

**songe d'une nuit d'été ... (1)**. Paris. 19-April/1936. India ink on Arches paper. 25,6 x 34,4 cm. Musée Picasso, Paris.

**OPP.36:225**; MPP:3662.160.01r; AM.08:283p





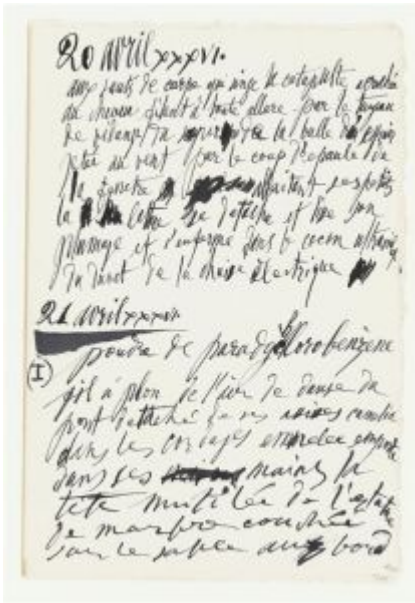
**Baigneuse à la cabine (Paysage de Juan-les-Pins).** Juan-les-Pins. 19~21, 22-April/1936. India ink & tinted wash on paper folded in two. 26 x 17,3 cm. Musée Picasso, Paris. Dation 1979.

**OPP.36:041**; MPP:1157.r.p1; P.IV:773; PP.36:033; IC.05\*:90; JC.01a\*:183; PD.06\*:257p; PP.19:224p; TO.99\*:76

**Portrait de femme (Femme lisant).** Juan-les-Pins. 20-April/1936. Oil on canvas. 41 x 33 cm. The Picasso Estate.

**OPP.36:021**; P.IV:768; PP.36:032; DD.61:101p; PD.09:306p; UP.00:738; WW.91:372p





**aux sauts de carpe ... (1); poudre de paradichlorobenzène ... (1).** Paris. 20, 21-April/1936. Pen & India ink on Ingres d'Arches paper. 25,6 x 34,4 cm. Musée Picasso, Paris.

OPP.36:472; MPP:3663.162.01r

**aux sauts de carpe qui singe ...; poudre de parady ...; du point frappant le front du mondre ...** Paris. 20~21-April/1936. Typescript on paper. 26,8 x 21,2 cm. Musée Picasso, Paris.

OPP.36:434; MPP:3663.163.01r







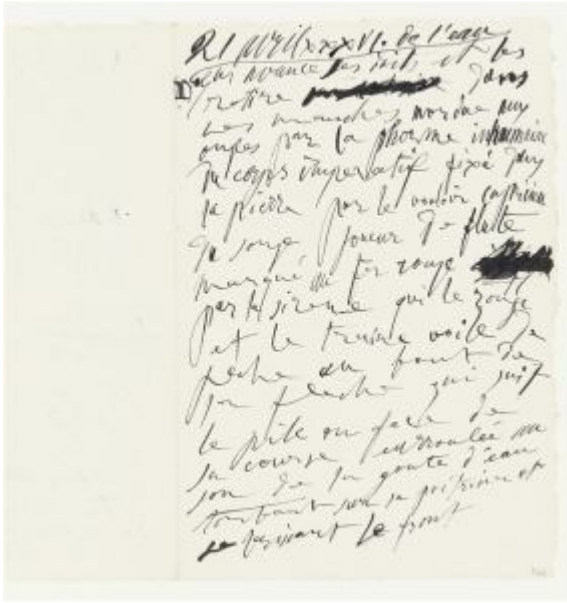
**aux sauts de carpe qui singe ...; poudre de parady ...; du point frappant le front du mondre ....** Paris. 20~21-April/1936. Typescript on paper. 26,8 x 21,2 cm. Musée Picasso, Paris.

**OPP.36:435; MPP:3663.163.03r**

**aux sauts de carpe qui singe ...; poudre de parady ...; du point frappant le front du mondre ....** Paris. 20~21-April/1936. Typescript on paper. 26,8 x 21,2 cm. Musée Picasso, Paris.

**OPP.36:436; MPP:3663.163.05r**





**poudre de paradychlorobenzène ... (1)**. Paris. 21-April/1936. Pen & India ink on Ingres d'Arches paper. 25,6 x 34,4 cm. Musée Picasso, Paris.

**OPP.36:473**; MPP:3663.162.03r



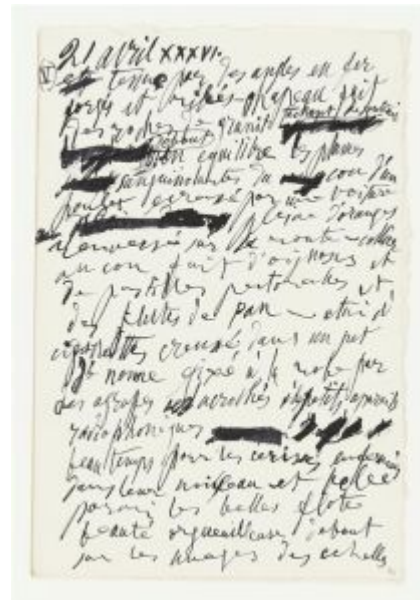
**poudre de paradychlorobenzène ... (1)**. Paris. 21-April/1936. Pen & India ink on Ingres d'Arches paper. 25,6 x 34,4 cm. Musée Picasso, Paris.

**OPP.36:474**; MPP:3663.162.05r



**poudre de paradichlorobenzène ... (1).** Paris. 21-  
April/1936. Pen & India ink on Ingres d'Arches paper.  
25,6 x 34,4 cm. Musée Picasso, Paris.

**OPP.36:475;** MPP:3663.162.07r



**poudre de paradichlorobenzène ... (1).** Paris. 21-  
April/1936. Pen & India ink on Ingres d'Arches paper. 25,6 x  
34,4 cm. Musée Picasso, Paris.

**OPP.36:476;** MPP:3663.162.09r



**poudre de paradychlorobenzène ... (1).** Paris.  
21-April/1936. Pen & India ink on paper. 25,6 x 34,4  
cm. Musée Picasso, Paris.

**OPP.36:477**; MPP:3663.162.11r

**Femme écrivant une lettre.** Juan-les-Pins. 22-  
April/1936. Oil on canvas. 46 x 38 cm. Private  
collection, New York.

**OPP.36:022**; P.IV:769; PP.36:035; CG.04\*:19;  
DD.61:102p; GA.00\*:57; MG.04b\*:74;  
RP.11\*:201p; UP.00:739; WW.91:372p





**Baigneuses à la cabine (Études)**. Juan-les-Pins. 22-April/1936.  
India ink & tinted wash on paper folded in two. 26 x 17,3 cm. Musée  
Picasso, Paris. Dation 1979.

**OPP.36:172**; MPP:1157.v.p3; PP.36:034; IC.05\*:n/a; PP.19:225p

**Homme au masque, femme et enfant dans ses  
bras (Marie-Thérèse et Maya)**. Juan-les-Pins. 23-  
April/1936. Pen, India ink & tinted wash on paper. 65,5  
x 50,3 cm. Musée Picasso, Paris. Dation 1979.

**OPP.36:074**; MPP:1158; P.IV:774; PP.36:036;  
Z.VIII:278; AN.18\*:84; CK.04\*:64; GG.87:50p;  
GP.96:208p; JR.21:90p; LG.81:468; MA.08a\*:n/a;  
MM.04\*:191p; MS.04\*:n/a; ND.01\*:74; PA.79a\*:530;  
PD.93:32; PP.19:200p; SD.05\*:94; SS.76:257;  
SY.11\*:n/a; UP.00:736; UW.84:82p; WR.96:368p;  
WS.11:85p; WS.94:71p; WS.95a\*:97





**sonnerie militaire ... (1) (2).** Juan-les-Pins. 23-April/1936. India ink on Ingres d'Arches paper. 25,6 x 34,8 cm. Musée Picasso, Paris.

**OPP.36:130**; MPP:3663.164.01r; AM.08:85p; BP.21:225p; CW.89:124p

**sonnerie militaire de l'harpe ....** Paris. 23-April/1936. Typescript on paper. 27,1 x 21,1 cm. Musée Picasso, Paris.

**OPP.36:410**; MPP:3663.165r





**Portrait de femme de profil.** Juan-les-Pins. 24-April/1936. Oil on canvas. 65 x 54 cm. The Picasso Estate.

**OPP.36:024**; P.IV:775; PP.36:039; DD.61:103p

**Portrait de femme de profil (Études).** Juan-les-Pins. 24-April/1936. India ink on Arches paper folded in two. 26 x 17,4 cm. Musée Picasso, Paris. Dation 1979.

**OPP.36:075**; MPP:1159.r.p1; P.IV:776; PP.36:037; AN.18\*:85; PD.06\*:n/a; PP.19:226p





**Portrait de femme de profil (Études)**. Juan-les-Pins. 24-April/1936. India ink on a sheet folded in two. 26 x 17,4 cm. Musée Picasso, Paris. Dation 1979.

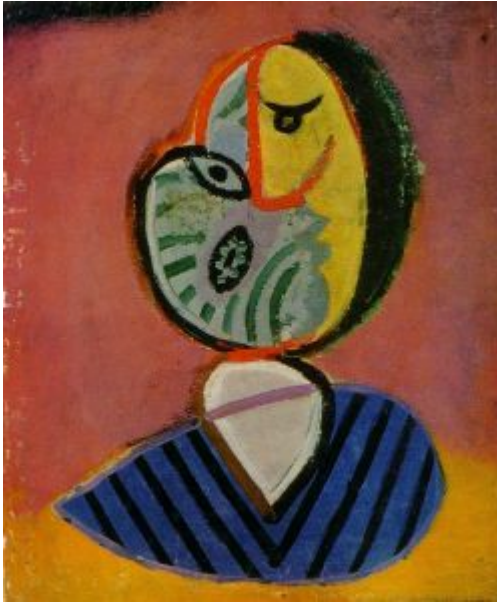
**OPP.36:076**; MPP:1159.v.p3; P.IV:784; PP.36:038; LG.81:151; PD.06\*:n/a

**jambes en l'air ....** Juan-les-Pins. 24-April/1936. India ink on Ingres d'Arches paper. 25,6 x 34,8 cm. Musée Picasso, Paris. Dation 1979.

**OPP.36:131**; MPP:3663.164.03r; AM.08:78p; BP.21:226p; CW.89:127p; PP.19:119p







**Tête de femme.** Juan-les-Pins. 25-April/1936. Oil on canvas. 46 x 38 cm. The Picasso Estate.

**OPP.36:025**; P.IV:778; PP.36:041; DD.61:106p

**Dormeuse aux persiennes.** Juan-les-Pins. 25-April/1936. Oil & charcoal on canvas. 54,5 x 65,2 cm. Musée Picasso, Paris. Dation 1979.

**OPP.36:026**; MPP:152; P.IV:779;  
PP.36:040; AN.18\*:87; DD.61:105p;  
JM.93:88p; JR.21:848p; LP.99:142-143p;  
LU.93:47; MA.08a\*:n/a; MB.06\*:n/a;  
MN.80\*:n/a; MP.85:130; PA.21e\*:384;  
PA.79a\*:251; PD.09:307p; PI.03:19;  
PP.19:199p; RS.88:122p; RU.17\*:199;  
SP.04\*:n/a; TK.04\*:n/a; UP.00:735;  
VO.05\*:n/a; WR.80\*:333p





**Études pour Dormeuse aux persiennes.** Juan-les-Pins. 25-April/1936. India ink on laid paper folded in two. 26 x 17,5 cm. Musée Picasso, Paris. Dation 1979.

**OPP.36:173**; MPP:1160.r.p1; P.IV:777; PP.36:042; AN.18\*:86; PP.19:227p

**Femme au chapeau.** Juan-les-Pins. 26-April/1936. Oil on canvas. 73 x 59,7 [60] cm. Yale University Art Gallery. (Inv 2006.52.22). Charles B. Benenson, B.A. 1933 Collection.

**OPP.36:027**; P.IV:782; PP.36:044; DD.61:107p; SF.09\*:16





**Femme au chapeau.** Juan-les-Pins. 26-April/1936. India ink on laid paper folded in two. 26 x 17,5 cm. Musée Picasso, Paris. Dation 1979.

**OPP.36:174**; MPP:1160.v.p3; P.IV:783; PP.36:043; PP.19:228p; SF.09:133p

**Famille mythologique (Marie-Thérèse et Maya).** Juan-les-Pins. 27-April/1936. Pen, India ink & wash on paper. 62 x 48 cm. Private collection.

**OPP.36:077**; P.IV:786; PP.36:045; Z.VIII:281; JL.67b:67p; JL.71:15p; LG.81:479; RP.11\*:210p; SS.76:258; VO.16:73p; WR.96:368p; WS.95a\*:96





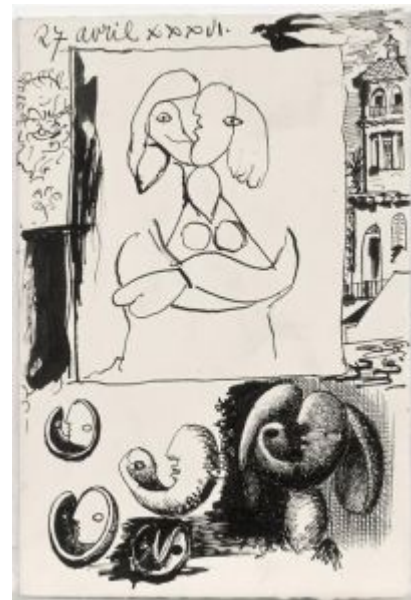
**Composition.** Juan-les-Pins. 27-April/1936. India ink. 25,5 x 34,5 cm. Private collection.

**OPP.36:078**; P.IV:787; PP.36:046; Z.VIII:277;  
LG.81:471

---

**Feuille d'études.** Juan-les-Pins. 27-April/1936. India ink on a sheet folded in two. 26 x 17,3 cm. Musée Picasso, Paris. Dation 1979.

**OPP.36:175**; MPP:1162.v.p3; P.IV:785; PP.36:048;  
SF.09:133p





**Enveloppe autographe à Dora Maar.** Paris. 27-April/1936. Black, brown & red ink on blue envelope [Obverse of *Enveloppe autographe à Dora Maar*]. 9,6 x 14,6 cm. Musée Picasso, Paris.

**OPP.36:532**; MPP:1998.78r

**Enveloppe autographe à Dora Maar.** Paris. 27-April/1936. Black, brown & red ink on blue envelope [Reverse of *Enveloppe autographe à Dora Maar*]. 9,6 x 14,6 cm. Musée Picasso, Paris.

**OPP.36:533**; MPP:1998.78v





**Feuille d'études: Buste de femme, Tête at le chapeau de paille au feuillage bleu.** Juan-les-Pins. 27-April, 1-May/1936. India ink on laid paper folded in two. 26 x 17,3 cm. Musée Picasso, Paris. Dation 1979.

**OPP.36:040**; MPP:1162.r.p1; PP.36:047; AN.18\*:88; BA.03a\*:171; GU.00:10; PA.18e:65p; PD.06\*:258p; PP.19:229p; WR.96:72p

**Nu couché et profil.** Juan-les-Pins. 28-April/1936. India ink on paper. 17,2 x 25,5 cm. Musée Picasso, Paris. Dation 1979.

**OPP.36:176**; MPP:1161; P.IV:790; PP.36:049; JC.01a\*:185; PD.06\*:261p; RP.06\*:105







**Vénus sortie ... (2).** Juan-les-Pins. 28-April/1936. Pen & India ink on Ingres d'Arches paper folded in two. 25,8 x 17,5 cm. Musée Picasso, Paris. Dation 1979.

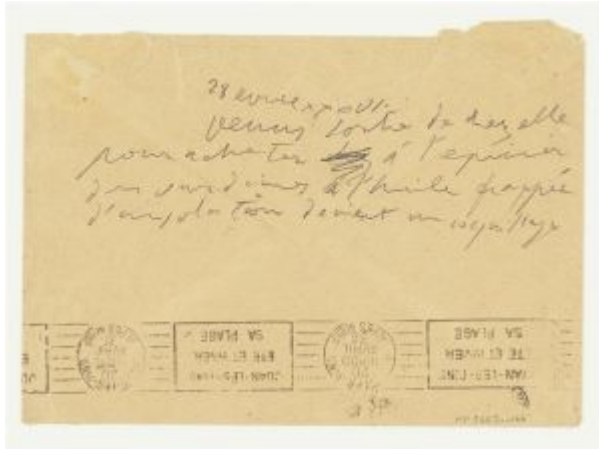
**OPP.36:211**; MPP:3663.167.05r; P.IV:792; AM.08:52p; CW.89:400p; PP.19:165p



**Vénus sortie ... (2) (3).** Juan-les-Pins. 28-April/1936. Pen & India ink on Ingres d'Arches paper. 25,8 x 17,5 cm. Musée Picasso, Paris.

**OPP.36:212**; MPP:3663.167.07r; MPP:3663.1936.80; AM.08:53p; CW.89:400p





**Vénus sortie ... (1)**. Paris. 28-April/1936. Graphite on beige envelope [Obverse of *venus sortie ... (1)*]. 13,1 x 18,7 cm. Musée Picasso, Paris.

**OPP.36:223**; MPP:3663.166v; AM.08:47p

**venus sortie ... (1)**. Paris. 28-April/1936. Typescript on envelope [Reverse of *Vénus sortie ... (1)*]. 13,1 x 18,7 cm. Musée Picasso, Paris.

**OPP.36:418**; MPP:3663.166r





**Vénus sortie ... (2)**. Paris. 28-April/1936. Pen & India ink on Ingres d'Arches paper. 25,8 x 17,5 cm. Musée Picasso, Paris.

**OPP.36:478**; MPP:3663.167.04r

**do 3 ré 1 mi 0 ... (1)**. Paris. 28-April~3-May/1936. Blank page. 25,8 x 17,5 cm. Musée Picasso, Paris.

**OPP.36:479**; MPP:3663.167.14r





**venus sortie de chez elle pour acheter à l'épicier des sardines ...; sur la table mise ....** Paris. 28-April~3-May/1936. Typescript on paper. 27,2 x 21,1 cm. Musée Picasso, Paris.

**OPP.36:437**; MPP:3663/168.01r

**venus sortie de chez elle pour acheter à l'épicier des sardines ...; sur la table mise ....** Paris. 28-April~3-May/1936. Typescript on paper. 27,2 x 21,1 cm. Musée Picasso, Paris.

**OPP.36:438**; MPP:3663.168.03r





**venus sortie de chez elle pour acheter à l'épicer des sardines ...; sur la table mise ...** Paris. 28-April~3-May/1936. Typescript on paper. 27,2 x 21,1 cm. Musée Picasso, Paris.

**OPP.36:439**; MPP:3663.168.05r

**venus sortie de chez elle pour acheter à l'épicer des sardines ...; sur la table mise ....** Paris. 28-April~3-May/1936. Typescript on paper. 27,2 x 21,1 cm. Musée Picasso, Paris.

**OPP.36:440**; MPP:3663.168.07r





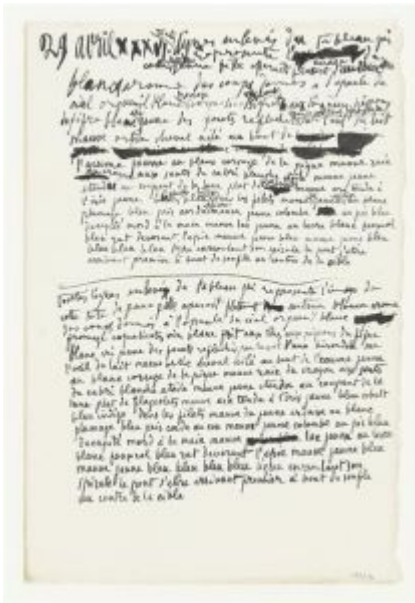
**Deux femmes enlacées.** Juan-les-Pins. 29-Avril/1936. Oil & charcoal on canvas. 65 x 53,9 cm. Paloma Ruiz-Picasso Collection.

**OPP.36:012**; P.IV:789; PP.36:050; DD.61:109p; HN.00\*:43; JR.21:95p; LU.93:48; ME.82a\*:72; MI.01\*:87; RP.11\*:191p; UP.00:728

**toutes lignes enlevées ... (1).** Juan-les-Pins. 29-Avril/1936. Pen & India ink on Ingres d'Arches paper folded in two. 25,8 x 17,5 cm. Musée Picasso, Paris. Dation 1979.

**OPP.36:132**; MPP:3663.167.09r; MPP:3663.192681; AM.05:64p; AM.08:222p; BP.21:229p; CW.89:130p; PP.19:151p





**toutes lignes enlevées ... (2) (3).** Juan-les-Pins. 29-April/1936.  
Pen & India ink on Ingres d'Arches paper. 25,8 x 17,5 cm. Musée  
Picasso, Paris.

OPP.36:240; MPP:3663.167.11r; AM.08:223p

**Femme à la montre.** Juan-les-Pins. 30-April/1936.  
Oil on canvas. 65 x 54,2 cm. Musée Picasso, Paris.  
Dation 1979.

OPP.36:013; MPP:153; P.IV:791; PP.36:051;  
BD.16\*:62; BP.21:681p; DD.61:110p; JR.21:94p;  
MA.08a\*:n/a; MN.80\*:n/a; MP.85:131;  
PA.17b\*:197; PA.79a\*:252; PP.19:95p; RP.11:40p;  
UP.00:741; VR.16\*:n/a





**Le chapeau de paille au feuillage bleu.** Juan-les-Pins. 1-May/1936. Oil on canvas. 61 x 50 cm. Musée Picasso, Paris. Dation 1979.

**OPP.36:008**; MPP:155; P.IV:797; PP.36:053; AB.05a\*:102; AB.06\*:108; AB.12\*:208p; AN.18\*:90; BS.22:75p; DD.61:113p; GP.96:206p; HD.01:45; HD.04:44p; MA.08a\*:n/a; MF.06\*:149; MP.85:133; PA.18e\*:133; PA.19e\*:41; PA.79a\*:254; PP.19:230p; SD.05\*:73; SY.11\*:n/a; TK.04\*:n/a; UP.00:733; WR.80\*:331p; WR.96:73p; WW.91:370p

**Tête.** Juan-les-Pins. 1-May/1936. Oil on canvas. 61 x 50 cm. Musée Picasso, Paris. Dation 1979.

**OPP.36:009**; MPP:154; P.IV:796; PP.36:052; AB.05a\*:96; AB.05b\*:36; AB.06\*:102; AB.12\*:202p; AN.18\*:89; BA.03a\*:170; BA.23\*:182p; BM.18\*:47; DD.61:112p; JP.07:23p; JP.79:14p; LU.93:514p; MA.08a\*:n/a; MB.06\*:n/a; MP.85:132; PA.79a\*:253; PP.19:231p; SY.11\*:n/a; WR.96:76p





**Nature morte.** Juan-les-Pins. May/1936. Oil on canvas. 73 x 60 cm. Fundación Almine & Bernard Ruiz-Picasso para el Arte.

**OPP.36:178**; PP.36:064; BA.18\*:17p; DD.61:218p

**Nature morte aux citrons.** Juan-les-Pins. May/1936. Oil on canvas. 65 x 54,2 cm. Christie's. #1280, 12147, 11/17/16.

**OPP.36:179**; PP.36:065; DD.61:218p; MR.13\*:48





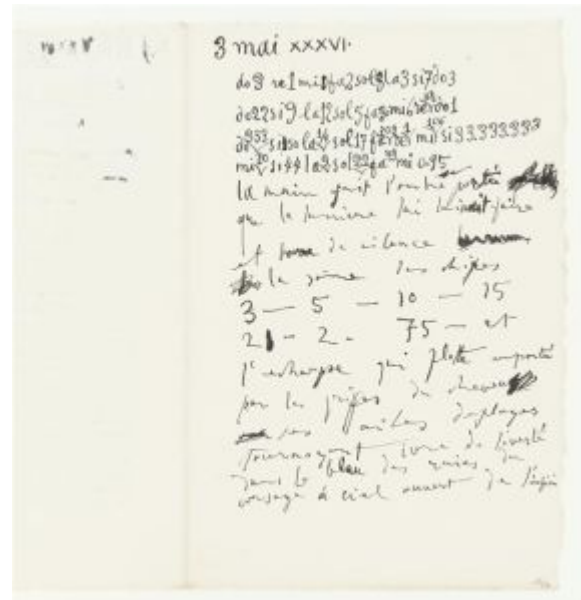


**Femmes dans un intérieur.** Juan-les-Pins. 2-May/1936. Oil & charcoal on canvas. 61 x 50,5 cm. Musée Picasso, Paris. Dation 1979.

**OPP.36:011**; MPP:156; P.IV:795; PP.36:054; BP.21:843p; DD.61:115p; HA.16\*:n/a; JR.21:n/p; MA.08a\*:n/a; MB.06\*:n/a; MG.80:167p; MP.85:134; PA.17b\*:198; PA.79a\*:255; PP.19:190p; UP.00:740

**do 3 ré 1 mi 0 ... (1).** Juan-les-Pins. 3-May/1936. Pen & India ink on Ingres d'Arches paper folded in two. 25,8 x 17,5 cm. Musée Picasso, Paris. Dation 1979.

**OPP.36:133**; MPP:3663.167.13r; AM.05:66p; AM.08:219p; BP.21:230p; CW.89:131p; PA.20j\*:91; PP.19:193p





**Étude pour la série Le sauvetage.** Juan-les-Pins. 4-May/1936. India ink on paper. 34,5 x 50 cm. Paloma Ruiz-Picasso Collection.

**OPP.36:054**; P.IV:798; PP.36:055; Z.VIII:284; AN.18\*:92; LO.18:213p; MR.13\*:46; UP.00:731; WS.88:72p

---

**Étude pour la série Le sauvetage.** Paris. 4-May/1936. Pencil on paper. 18,5 x 26 cm. Private collection, Switzerland.

**OPP.36:162**; P.IV:799; AN.18\*:91; MM.04\*:147p; MS.04\*:n/a; RP.11\*:193p





**par lambeaux ... (1)**. Paris. 4-May/1936. Pen & India ink on Ingres d'Arches paper. 26 x 34,3 cm. Musée Picasso, Paris.

**OPP.36:469**; MPP:3663.169.01r

**Par lambeaux toutes les ombres ...; serrés du cou du flacon ...; des drapeaux tendus ....** Paris. 4~5-May/1936. Typescript on paper. 27,1 x 21,1 cm. Musée Picasso, Paris.

**OPP.36:441**; MPP:3663.170.01r





**Par lambeaux toutes les ombres ...; serrés du cou du flacon ...; des drapeaux tendus ....** Paris. 4~5-May/1936. Typescript on paper. 27,1 x 21,1 cm. Musée Picasso, Paris.

**OPP.36:442; MPP:3663.170.03r**

**Par lambeaux toutes les ombres ...; serrés du cou du flacon ...; des drapeaux tendus ....** Paris. 4~5-May/1936. Typescript on paper. 27,1 x 21,1 cm. Musée Picasso, Paris.

**OPP.36:443; MPP:3663.170.05r**





**Deux chevaux.** Juan-les-Pins. 5-May/1936. Pen, ink & wash. 16 x 25,5 cm. Marina Picasso Collection. (Inv 03816). Courtesy Galerie Jan Krugier, Geneva.

**OPP.36:055**; PP.36:056; MP.81\*:180

**serrés au cou du flacon ... (1); serrés au cou du flacon ... (2).** Paris. 5-May/1936. Pen & India ink on Ingres d'Arches paper. 26 x 34,3 cm. Musée Picasso, Paris.

**OPP.36:470**; MPP:3663.169.03r





**Minotaure et jument morte devant une grotte face à une fille au voile.** Juan-les-Pins. 6-May/1936. Gouache, India ink and incisions on vellum Arches paper. 50,4 x 65,6 cm. Musée Picasso, Paris. Dation 1979.

**OPP.36:004**; MPP:1163; P.IV:804; PP.36:057; AB.05a\*:83; AB.06\*:45; AB.69:8a; BP.21:841p; CK.04:59p; DB.89:111p; EM.55:174p; GC.96:225p; GG.87:54p; GG.93:18; GU.00:124; JB.08:20-21; JC.01b\*:67; MA.08a\*:n/a; MB.06\*:n/a; MN.80\*:n/a; NM.08:23; OW.13:280-281p; PA.02f\*:n/a; PA.17b\*:139; PA.79a\*:531; PD.06\*:167p; PE.00\*:57; PP.19:189p; PP.20\*:191; RB.99:94p; RJ.03:127; SD.05\*:92; SP.04\*:n/a; SS.76:259; TC.13:6.14; TK.04\*:n/a; UP.00:744; WR.80\*:334p; WW.91:378p

**La femme au voile.** Juan-les-Pins. 6-May/1936. India ink & watercolor. 25,5 x 34 cm. The Picasso Estate. (Inv 3817).

**OPP.36:285**; CP.95:55p





**Minotaure blessé, cavalier et personnages.**  
 Juan-les-Pins. 8-May/1936. India ink & gouache on paper. 50 x 65,5 cm. Musée Picasso, Paris. Dation 1979.

**OPP.36:066**; MPP:1164.r; P.IV:801; PP.36:058;  
 Z.VIII:285; AB.05a\*:n/a; AB.06\*:43; BP.21:820p;  
 CK.04\*:61; JC.01b\*:68; KB.04:46p; MB.06\*:n/a;  
 PA.93a\*:97; PD.06\*:266p; PE.00\*:58; PP.19:32p;  
 SS.76:260; UP.00:742; UW.84\*:55

**corps enroulé ... (1) (2).** Juan-les-Pins. 8-May/1936.  
 India ink & pen on Arches paper folded in two. 26 x 34,9  
 cm. Musée Picasso, Paris. Dation 1979.

**OPP.36:134**; MPP:3663.171.01r; AM.08:86p; BP.21:233p;  
 CW.89:133p; PP.19:152p





**Buste de faune.** Juan-les-Pins. 8-May/1936.  
India ink. 50 x 65 cm. Musée Picasso, Paris. Dation  
1979.

**OPP.36:177**; MPP:1164.v; PP.36:059

**corps enroulé de la robe de bronze ...; ou les  
grappes des grosseilles ...; mais si la robe  
detachée ....** Paris. 8~11-May/1936. Typescript on  
paper. 27,1 x 21,1 cm. Musée Picasso, Paris.

**OPP.36:444**; MPP:3663.172.01r







**corps enroulé de la robe de bronze ...; ou les grappes des grosseilles ...; mais si la robe détachée ....** Paris. 8~11-May/1936. Typescript on paper. 27,1 x 21,1 cm. Musée Picasso, Paris.

OPP.36:445; MPP:3663.172.03r

**corps enroulé de la robe de bronze ...; ou les grappes des grosseilles ...; mais si la robe détachée ....** Paris. 8~11-May/1936. Typescript on paper. 27,1 x 21,1 cm. Musée Picasso, Paris.

OPP.36:446; MPP:3663.172.05r





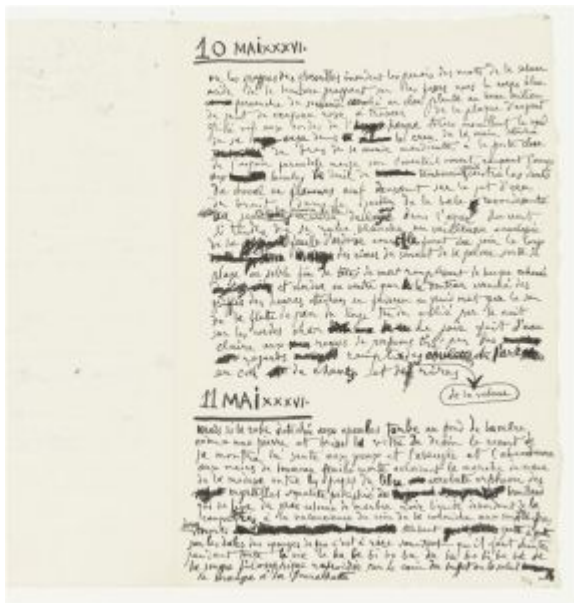
**Composition au Minotaure.** Juan-les-Pins. 9-May/1936. Gouache, pen & ink & pencil on paper. 50,2 by 65,2 cm. Sotheby's. #18, L14002, 02/05/14. Formerly Marina Picasso Collection.

**OPP.36:081**; P.IV:800; PP.36:060; Z.VIII:286; AB.69:9a; BS.11\*:n/a; CK.04:61p; HC.88:5.23; LG.81:474; MA.01a\*:62; MB.84\*:113; MP.81\*:187; MP.83\*:148; MU.07a\*:189; NY.91a\*:n/a; PA.02f\*:n/a; SN.92:30; SS.76:261; TK.90b\*:19; TU.86\*:162; UP.00:745; UW.84:55a; VE.81\*:228; VI.05\*:154; WR.80\*:334p; WS.11:87p

**Scène de la minotauromachie: Minotaure blessé, cheval et personnages.** Juan-les-Pins. 10-May/1936. Pen, India ink & gouache on paper. 50 x 65 cm. Musée Picasso, Paris. Dation 1979.

**OPP.36:003**; MPP:1165; P.IV:802; PP.36:061; Z.VIII:288; AB.05a\*:82; AB.06\*:44; HC.88:5.22; JC.01b\*:69; MA.08a\*:n/a; MB.06\*:n/a; MN.80\*:n/a; PA.02f\*:n/a; PA.93a\*:98; PD.06\*:265p; PE.00\*:59; RD.00\*:111; SS.76:262; TC.13:6.13; UP.00:743; UW.84\*:56; WR.80\*:334p; WW.91:378p





**où les grappes des groseilles ... (1); mais si la robe ... (1).** Paris. 10~11-May/1936. Pen & India ink on paper. 26 x 34,9 cm. Musée Picasso, Paris.

OPP.36:471; MPP:3663.171.03r



**la plume bleue ... (1).** Paris. 13-May/1936. Pen & India ink on beige vellum paper. 27,6 x 18 cm. Musée Picasso, Paris.

OPP.36:419; MPP:3663.173.01r



**la plume bleu du liquide souriant ....** Paris. 13-May/1936.  
Typescript on paper. 27,1 x 21,1 cm. Musée Picasso, Paris.

**OPP.36:411**; MPP:3663.174r

**Buffon, Histoire Naturelle L026 (L'araignée).** Paris.  
Mid-May/1936. Aquatint, etching & drypoint. 27,2 x 24  
cm. The Museum of Modern Art, NYC. (Inv 976.1964.26).  
The Louis E. Stern Collection.

**OPP.36:053**; B.I:353; Ba:600.2B; GC:37.26;  
GM.81\*:114





**Buffon, Histoire Naturelle L014 (Le vautour)**. Paris. Mid-May/1936. Aquatint & drypoint. 36 x 28 cm. The Museum of Modern Art, NYC. (Inv 976.1964.14). The Louis E. Stern Collection.

**OPP.36:088**; B.I:341; Ba:588.B; GC:37.14; GM.81\*:102

**Buffon, Histoire Naturelle L005 (Le bélier)**. Paris. Mid-May/1936. Sugarlift aquatint & drypoint on Montval paper, edition 8. [36 x 28] 36,5 x 27,8 cm. The Museum of Modern Art, NYC. (Inv 976.1964.5). The Louis E. Stern Collection. Also Victoria and Albert Museum, London.

**OPP.36:090**; B.I:332; GC:37.05; AB.46:210p; CP.95:127p; GM.81\*:93; MS.00a:44p





**Buffon, Histoire Naturelle L003 (Taureau).** Paris. Mid-May/1936. Aquatint with etching & drypoint on Montval laid, edition 47. [36 x 28] 44,4 x 33,2 cm. Christie's. #340, 7063, 06/29/05.

**OPP.36:092;** B.I:330; Ba:577.2Ba; GC:37.03; GM.81\*:91; RR.06\*:160

**Buffon, Histoire Naturelle L006 (Le chat).** Paris. Mid-May/1936. Sugar lift aquatint, edition 226. [36 x 28] 37,3 x 28,3 cm. Victoria and Albert Museum, London. Also Christie's. #73, 5107, 06/23/04.

**OPP.36:098;** B.I:333; Ba:580.2B; GC:37.06; BF.14:32p; CP.95:105p; GM.81\*:94





**Buffon, Histoire Naturelle L011 (Le lion).** Paris. Mid-May/1936. Aquatint. 26 x 21 cm. Goldmark Gallery. 2008.

**OPP.36:099**; B.I:338; Ba:585.B; GC:37.11; GM.81\*:99

---

**Buffon, Histoire Naturelle L007 (Le chien II).** Paris. Mid-May/1936. Sugarlift aquatint & drypoint. [27 x 25] 26,7 x 23,1 cm. The Museum of Modern Art, NYC. (Inv 976.1964.7). The Louis E. Stern Collection.

**OPP.36:100**; B.I:334; Ba:581.2B; GC:37.07; GM.81\*:95





**Buffon, Histoire Naturelle L009 (La biche II).** Paris. Mid-May/1936. Sugarlift aquatint & drypoint. 28 x 22 cm. The Museum of Modern Art, NYC. (Inv 976.1964.9). The Louis E. Stern Collection.

**OPP.36:101**; B.I:336; Ba:583.2B; GC:37.09; GM.81\*:97

**Buffon, Histoire Naturelle L004 (Taureau).** Paris. Mid-May/1936. Etching. [36 x 28] 37,5 x 28,5 cm. Victoria and Albert Museum, London. Also Christie's. #240, 1039, 12/11/01.

**OPP.36:103**; B.I:331; Ba:578.B; GC:37.04; CP.95:36p; GM.81\*:92







**Buffon, Histoire Naturelle L029 (Le crapaud).** Paris. Mid-May/1936. Aquatint, etching & drypoint, edition 266. 37,5 x 28 cm. Marina Picasso Collection. (Inv 22970). Courtesy Galerie Jan Krugier, Geneva. Also Sotheby's. #175, L02195, 12/05/02.

**OPP.36:104;** B.I:356; Ba:603.2B; GC:37.29; FM.07\*:n/a; GM.81\*:117

---

**Buffon, Histoire Naturelle L023 (Papillon).** Paris. Mid-May/1936. Etching with aquatint, edition 226. 37,5 x 29,5 cm. Sotheby's. #217, N08193, 04/28/06.

**OPP.36:105;** B.I:350; Ba:597.2B; GC:37.23; GM.81\*:111; PA.21f\*:47





**Buffon, Histoire Naturelle L031 (Le sauterelle (IV)).** Paris. Mid-May/1936. Etching with drypoint & aquatint on wove paper, edition 226. 41,5 x 31,8 cm. Christie's. #240, 1538, 07/12-13/05.

**OPP.36:107**; B.I:358; Ba:605.4Ba; GC:37.31; GM.81\*:119; HG.71:188p; LV.06\*:n/a; PA.21f\*:46

**Buffon, Histoire Naturelle L025 (Le langouste).** Paris. Mid-May/1936. Etching, edition 226. 31,2 x 21,2 cm. The Museum of Modern Art, NYC. (Inv 976.1964.25). The Louis E. Stern Collection.

**OPP.36:108**; B.I:352; Ba:599.3B; GC:37.25; CP.95:145p; GM.81\*:113





**Buffon, Histoire Naturelle L001 (Cheval).** Paris. Mid-May/1936. Sugar lift aquatint & etching on Montval, edition 55. [38 x 29,5] [38,4 x 29,5] [36,5 x 27,5] 36 x 28 cm. Victoria and Albert Museum, London. Also Sotheby's. #96, PF5018, 12/15/05.

**OPP.36:109**; B.I:328; GC:37.01; CP.95:59p; GM.81\*:89

**Buffon, Histoire Naturelle L032 (La puce).** Paris. Mid-May/1936. Aquatint with etching & drypoint on wove, edition 36. [36,8 x 28,6] 36 x 28 cm. Victoria and Albert Museum, London. Also Staatsgalerie Stuttgart. (Inv A 66/4462). Graphische Sammlung; Mr. & Mrs. Fred Grunwald Collection.

**OPP.36:141**; B.I:359; Ba:606.2B; GC:37.32; AC.09:33p; CP.95:152p; DK.61\*:148; ED.07\*:37; GM.81\*:120; JR.21:96p; LS.75:123; MS.04\*:n/a





**Buffon, Histoire Naturelle L016 (L'autruche)**. Paris. Mid-May/1936. Aquatint with drypoint on Montval wove paper. [26,5 x 21] 37 x 28 cm. Christie's. #0319, 1830, 05/01/07.

**OPP.36:142**; B.I:343; Ba:590.B; GC:37.16; CH.68a\*:152; EM.55:206p; GM.81\*:104; HG.71:188p; RR.06\*:160

---

**Les grenouilles (I)**. Paris. Mid-May/1936. Aquatint with drypoint on Montval wove paper. 36,5 x 26,7 cm. Galerie Michael, Beverly Hills, CA. 2007.

**OPP.36:143**; Ba:604.1A





**Buffon, Histoire Naturelle L030 (Les grenouilles)**. Paris. Mid-May/1936. Aquatint with drypoint & burnisher on Arches wove paper. 26,9 x 21,1 cm. The Museum of Modern Art, NYC. (Inv 976.1964.30). The Louis E. Stern Collection.

**OPP.36:144**; B.I:357; Ba:604.2A; GC:37.30; GM.81\*:118

---

**Buffon, Histoire Naturelle L017 (Le coq)**. Paris. Mid-May/1936. Etching & sugar lift aquatint, edition 226. [28 x 23] 26,7 x 20 cm. Victoria and Albert Museum, London. Also Christie's. #324, 5415, 11/29/05; Goldmark Gallery. 2007.

**OPP.36:145**; B.I:344; Ba:591.2A; GC:37.17;  
CP.95:78p; EM.55:207p; GM.81\*:105; MI.53\*:313





**Buffon, Histoire Naturelle L002 (L'ane).** Paris. Mid-May/1936. Aquatint, etching & drypoint. 31 x 24,3 cm. The Museum of Modern Art, NYC. (Inv 976.1964.2). The Louis E. Stern Collection.

**OPP.36:146**; B.I:329; Ba:576.4Ba; GC:37.02; GM.81\*:90; SF.09:139p

**Buffon, Histoire Naturelle L008 (Le chèvre).** Paris. Mid-May/1936. Aquatint, etching & drypoint. 27 x 20,4 cm. The Museum of Modern Art, NYC. (Inv 976.1964.8). The Louis E. Stern Collection.

**OPP.36:147**; B.I:335; Ba:582.2B; GC:37.08; GM.81\*:96; TO.97:119p





**Buffon, Histoire Naturelle L010 (Le loup)**. Paris. Mid-May/1936. Etching. [36 x 28] 36,5 x 26,7 cm. Victoria and Albert Museum, London. Also Franklin Bowles Gallery, San Francisco. 2007.

**OPP.36:148**; B.I:337; Ba:584.B; GC:37.10; CP.95:111p; GM.81\*:98

---

**Buffon, Histoire Naturelle L012 (Le singe)**. Paris. Mid-May/1936. Etching & aquatint on laid Montval paper, Edition 47. [36 x 28] 36,5 x 26,7 cm. Victoria and Albert Museum, London. Also Galerie Michael, Beverly Hills, CA. 2007.

**OPP.36:149**; B.I:339; Ba:586.Ba; GC:37.12; CP.95:167p; GM.81\*:100; JR.21:96p





**Buffon, Histoire Naturelle L013 (L'aigle blanc).** Paris. Mid-May/1936. Etching. 36,5 x 26,7 cm. The Museum of Modern Art, NYC. (Inv 976.1964.13). The Louis E. Stern Collection.

**OPP.36:150**; B.I:340; Ba:587.B; GC:37.13; GM.81\*:101



**Buffon, Histoire Naturelle L015 (L'epervier).** Paris. Mid-May/1936. Aquatint & drypoint. 36,5 x 26,7 cm. The Museum of Modern Art, NYC. (Inv 976.1964.15). The Louis E. Stern Collection.

**OPP.36:151**; B.I:342; Ba:589.B; GC:37.15; GM.81\*:103





**Buffon, Histoire Naturelle L018 (Le mère poule).** Paris. Mid-May/1936. Aquatint, etching, drypoint, & engraving. 32,2 x 24,5 cm. The Museum of Modern Art, NYC. (Inv 976.1964.18). The Louis E. Stern Collection.

**OPP.36:152;** B.I:345; Ba:592.3B; GC:37.18; GM.81\*:106

**Buffon, Histoire Naturelle L019 (Le dindon).** Paris. Mid-May/1936. Aquatint, drypoint & engraving. 27,5 x 22,8 cm. The Museum of Modern Art, NYC. (Inv 976.1964.19). The Louis E. Stern Collection.

**OPP.36:153;** B.I:346; Ba:593.4B; GC:37.19; GM.81\*:107; JL.71:254p





**Buffon, Histoire Naturelle L020 (Le pigeon).** Paris. Mid-May/1936. Etching. 36,5 x 26,7 cm. The Museum of Modern Art, NYC. (Inv 976.1964.20). The Louis E. Stern Collection.

**OPP.36:154**; B.I:347; Ba:594.B; GC:37.20; GM.81\*:108

---

**Buffon, Histoire Naturelle L021 (Le chardonneret).** Paris. Mid-May/1936. Aquatint, etching & drypoint. [36,5 x 26,7] 32,8 x 28,3 cm. The Museum of Modern Art, NYC. (Inv 976.1964.21). The Louis E. Stern Collection.

**OPP.36:155**; B.I:348; Ba:595.3A; GC:37.21; GM.81\*:109





**Buffon, Histoire Naturelle L022 (L'abeille)**. Paris. Mid-May/1936. Aquatint, etching & drypoint. 31 x 23,5 cm. The Museum of Modern Art, NYC. (Inv 976.1964.22). The Louis E. Stern Collection.

**OPP.36:156**; B.I:349; Ba:596.2A; GC:37.22; GM.81\*:110; PA.21f\*:48

**Buffon, Histoire Naturelle L024 (La guepe)**. Paris. Mid-May/1936. Etching. 36,5 x 26,7 cm. Christie's. #158, 5571, 03/23/10.

**OPP.36:157**; B.I:351; Ba:598.3B; GC:37.24; BS.55:310p; GM.81\*:112; HJ.96:59p





**Buffon, Histoire Naturelle L027 (La libellule).** Paris. Mid-May/1936. Etching. 27 x 20,5 cm. The Museum of Modern Art, NYC. (Inv 976.1964.27). The Louis E. Stern Collection. Also Victoria and Albert Museum, London.

**OPP.36:158**; B.I:354; Ba:601.2B; GC:37.27; CP.95:156p; GM.81\*:115; PA.21f\*:45; YB.99\*:145

---

**Buffon, Histoire Naturelle L028 (Le lézard).** Paris. Mid-May/1936. Aquatint, etching & drypoint. 36,5 x 26,7 cm. The Museum of Modern Art, NYC. (Inv 976.1964.28). The Louis E. Stern Collection.

**OPP.36:159**; B.I:355; Ba:602.2B; GC:37.28; GM.81\*:116





**Le lézard.** Paris. Mid-May/1936. Aquatint & drypoint. 41,5 x 31,5 cm. Sotheby's. #103, L20010, 06/18/20.

**OPP.36:341**; Ba:602.2A

---

**disque rose du parfum ... (1).** Paris. 16-May/1936. Blank page. 26,2 x 34,5 cm. Musée Picasso, Paris.

**OPP.36:462**; MPP:3663.175.04v





**non plus frappe ... (3), l'arôme des fleurs ... (3) (Baigneuse à la cabine).** Paris. 16, 18, 20-May/1936. Pen & India ink on Kodatrace paper. 37,7 x 30 cm. Galerie Kornfeld und Cie, Bern. #113, 06/23/95. Formerly Private Collection, Switzerland.

OPP.36:056; PP.36:062; AB.05a:88; AM.08:73p; BP.21:236p; CW.89:137p; DW.05:57p; IC.05\*:91; KB.01\*:117; MM.04\*:175p; MS.04\*:n/a; PP.19:80p; RP.11:35p

**non plus frappe ... (1), l'arôme des fleurs ... (1), ah si l'oiseau ... (2), fauna que tira ... (2).** Paris. 16, 18, 20, 23-May/1936. Pen & India ink on Ingres d'Arches paper. 26,2 x 34,5 cm. Musée Picasso, Paris.

OPP.36:135; MPP:3663.175.01r; MPP:3663.1936.89; CW.89:134p





**non plus frappe l'arôme de la saveur ...; disque rose du parfum ...; lettres m t flottant au gré ...** Paris. 16~23-May/1936. Typescript on paper. 26,7 x 20,6 cm. Musée Picasso, Paris.

**OPP.36:447; MPP:3663.176.01r**

**non plus frappe l'arôme de la saveur ...; disque rose du parfum ...; lettres m t flottant au gré ...** Paris. 16~23-May/1936. Typescript on paper. 26,7 x 20,6 cm. Musée Picasso, Paris.

**OPP.36:448; MPP:3663.176.03r**





**Baigneuse à la cabine.** Paris. 20-May/1936. Etching [After *non plus frappe ... (3), l'arôme des fleurs ... (3) (Baigneuse à la cabine)*]. 41,7 x 31,8 cm. Musée Picasso, Paris. Dation 1979.

**OPP.36:355**; B.I:1331; MPP:2734

**ah si l'oiseau ... (1); fauna que tira ... (1); disque rose du parfum ... (2).** Paris. 20, 23-May/1936. Pen & India ink on blue paper. 27 x 21 cm. Musée Picasso, Paris.

**OPP.36:463**; MPP:3663.178r







**disque rose du parfum ... (1).** Paris. 23-May/1936. Pen & India ink on Ingres d'Arches paper. 26,2 x 34,5 cm. Musée Picasso, Paris. Dation 1979.

**OPP.36:136**; MPP:3663.175.03r; BP.21:238p; CW.89:138p

**disque rose du parfum ... (3), rit l'ail ... (2), ahora nada más ... (2).** Paris. 23-May, 15-June, 13-August/1936. India ink on blue paper [Obverse of *ahora nada mas ...*]. 27 x 21,1 cm. Musée Picasso, Paris.

**OPP.36:214**; MPP:3663.184r; CW.89:403p





**disque rose du parfum ....** Paris. 23-May/1936. Typescript on paper. 27,1 x 21,1 cm. Musée Picasso, Paris.

OPP.36:412; MPP:3663.177r

**Baigneuse à la cabine (À Paul Éluard) (Paul Éluard, Transfusion du verbe).** Paris. 24-May/1936. Etching [After *non plus frappe ... (3)*, *l'arôme des fleurs ... (3)* (*Baigneuse à la cabine*)]. 37,7 x 30 cm. Private collection.

OPP.36:356





**La dépouille du Minotaure en costume d'arlequin (Le rideau de scène du '14 Juillet') (Romain Rolland) (Étude).** Paris. 28-May/1936. Gouache & India ink on paper. 44,8 x 54,5 cm. Musée Picasso, Paris. Dation 1979.

**OPP.36:071**; MPP:1166; P.IV:803; PP.36:063; Z.VIII:287; AB.06\*:47; AB.69:8b; BM.18\*:40; BP.21:63p; CG.05:53; DO.07:61p; DP.20:232p; EF.88:94p; GU.00:6; IC.05:126p; JR.21:101p; KB.04:49p; LU.93:73; MA.08a\*:n/a; MB.06\*:n/a; MN.80\*:n/a; MS.04:52p; PA.79a\*:532; PD.06\*:172p; PP.19:189p; PP.20\*:192; RB.99:97p; RJ.03:135; SG.88:92p; SN.98:70p; SS.76:263; UP.00:746; WR.80\*:335p; WS.88:52; WS.93:15p; WW.91:378p

**La dépouille du Minotaure en costume d'arlequin: Rideau de scène pour le 14 juillet de Romain Rolland (Avec Louis Fernández).** Paris. 28-May~July/1936. Tempera & India ink on cotton cloth [After *La dépouille du Minotaure en costume d'arlequin (Le rideau de scène du '14 Juillet') (Romain Rolland) (Étude)*]. 830 x 1325 cm. Musée National d'Art Moderne, Centre Georges Pompidou, Paris. (Inv D.1995.4.1). Dation Picasso 1965. Musée de peinture et de sculpture, dit Musée des Augustins; Abattoirs, Toulouse (07/95).

**OPP.36:095**; BM.18:75p; DC.87:391; GP.96:209p; JP.11a:260p; JR.21:n/p; NM.08:12; WW.91:26p





**Empreinte (au sucre) de la main de Picasso.** Paris. Early-June/1936. Copper plate for *Empreinte (au sucre) de la main de Picasso*. 16 x 11 cm. Musée Picasso, Paris. Don des héritiers Picasso en 1982.

**OPP.36:535**; MPP:1982.52; PA.21g\*:135p

**Grand Air (II) (Paul Éluard, Les Yeux Fertiles).** Paris. 3~4-June/1936. Heliogravure & scraper. 37 x 31 cm. Sotheby's. #177, N07988, 04/30/04.

**OPP.36:079**; B.I:289; Ba:608.02; GC:27; PP.36:066; AB.06\*:49; AH.62:26; BM.18\*:8; GG.96:27; JL.71:98p; JR.12:167p; JR.21:97p; LG.81:240; PA.19c\*:94p; PD.09:309p; RP.81:15.6; WR.80\*:341p; WR.96:75p



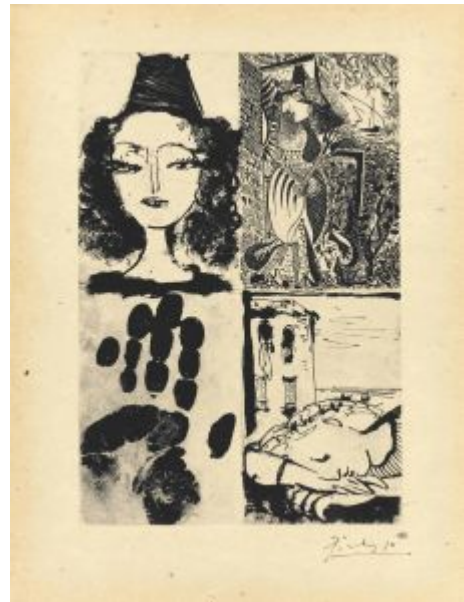


**Grand air (I)**. Paris. 3~4-June/1936. Heliogravure & scraper. 37,1 x 31,1 cm. Musée Picasso, Paris.

**OPP.36:333**; Ba:608.01; MPP:2735; KB.01\*:116

**Epreuve de la planche initiale (Paul Éluard, La Barre d'appui)**. Paris. 5-June/1936. Drypoint & aquatint. 22 x 16,5 cm. Christie's. #89, 5059, 04/29/04.

**OPP.36:087**; B.I:295a; Ba:607.2B; GC:26.5; P.IV:805; AB.46:194p; AM.81:19; BA.12b\*:214p; BA.19c\*:33p; JL.71:247p; SF.09:200p; WR.96:74p





**Portrait de Nusch Éluard (Paul Éluard, La Barre d'appui).** Paris. 5-June/1936. Sugar aquatint. 20,7 x 16,2 cm. Christie's. #462, 5403, 06/02/05.

**OPP.36:091**; B.I:293; Ba:607.2Ba; GC:26.1; AS.60:71p; BA.19c\*:32p

---

**Epreuve de la planche initiale (Paul Éluard, La Barre d'appui).** Paris. 5-June/1936. Drypoint & aquatint [Color variant of *Epreuve de la planche initiale (Paul Éluard, La Barre d'appui)*]. 22 x 16,5 cm. Private collection.

**OPP.36:102**; Ba:607.2C





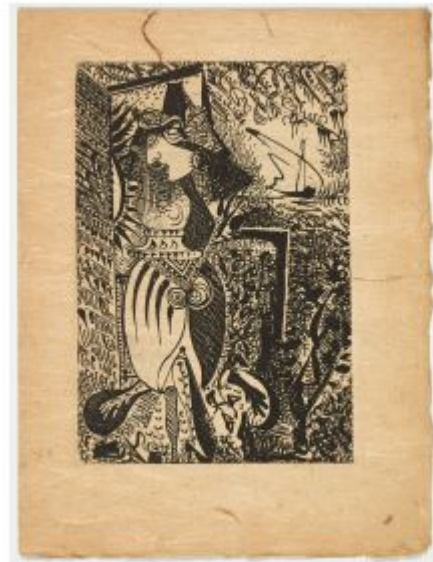
**Marie-Thérèse endormie au bord de la mer II (Paul Éluard, La Barre d'appui).** Paris. 5-June/1936. Sugar aquatint. 15,9 x 10,7 cm. Fine Arts Museums of San Francisco. (Inv 1999.165.21.2). Gift of the Reva and David Logan Foundation. Also Bibliothèque Nationale, Paris.

**OPP.36:161**; B.I:295; Ba:607.2Bd; GC:26.2; BA.19c\*:32p; MM.04\*:97p; MS.04\*:n/a

---

**Nusch au chapeau au bord de la mer II (Paul Éluard, La Barre d'appui).** Paris. 5-June/1936. Needle & sugar aquatint. 31,7 x 21,6 cm. Fine Arts Museums of San Francisco. (Inv 2000.200.60.4). The Reva and David Logan Collection of Illustrated Books. Also Bibliothèque Nationale, Paris.

**OPP.36:163**; B.I:294; Ba:607.2Bb; GC:26.4; BA.19c\*:32p; MM.04\*:177p; MS.04\*:n/a





**Maternité: Maya à dix mois avec Marie-Thérèse.** Paris. 5-June/1936. Pencil on Arches paper. 51 x 34 cm. Maya Widmaier Picasso Collection, Paris.

**OPP.36:180**; P.IV:794; PP.36:067; RP.11:72p

**Marie-Thérèse endormie au bord de la mer II.** Paris. 5-June/1936. Aquatint. 15,5 x 10,5 cm. The Museum of Modern Art, NYC. (Inv 32.1948). Acquired through the Lillie P. Bliss Bequest.

**OPP.36:251**







**Marie-Thérèse endormie au bord de la mer II.** Paris. 5-June/1936. Aquatint. 15,8 x 10,7 cm. The Museum of Modern Art, NYC. (Inv 33.1948). Acquired through the Lillie P. Bliss Bequest.

**OPP.36:252**

**Nusch au chapeau au bord de la mer II (Paul Éluard, La Barre d'appui).** Paris. 5-June/1936. Copper plate for *Nusch au chapeau au bord de la mer II (Paul Éluard, La Barre d'appui)*. 15,9 x 10,8 cm. Musée Picasso, Paris. Don des héritiers Picasso en 1982.

**OPP.36:317**; MPP:1982.50





**Marie-Thérèse endormie au bord de la mer II (Paul Éluard, La Barre d'appui)**. Paris. 5-June/1936. Copper plate for *Marie-Thérèse endormie au bord de la mer II (Paul Éluard, La Barre d'appui)*. 15,9 x 10,9 cm. Musée Picasso, Paris. Don des héritiers Picasso en 1982.

**OPP.36:318**; MPP:1982.51

---

**Portrait de Nusch Éluard (Paul Éluard, La Barre d'appui)**. Paris. 5-June/1936. Sugar aquatint in blue. 21,2 x 16,3 cm. Museu Picasso, Barcelona. Adquisició 2016.

**OPP.36:348**; MPB:115.000c1; BA.19c\*:32p





**Portrait de Nusch Éluard (Paul Éluard, La Barre d'appui)**. Paris. 5-June/1936. Sugar aquatint in green. 21,2 x 16,3 cm. Museu Picasso, Barcelona. Adquisición 2016.

**OPP.36:349**; MPB:115.000c2; BA.19c\*:32p



**Portrait de Nusch Éluard (Paul Éluard, La Barre d'appui)**. Paris. 5-June/1936. Sugar aquatint in red. 21,2 x 16,3 cm. Museu Picasso, Barcelona. Adquisición 2016.

**OPP.36:350**; MPB:115.000c3; BA.19c\*:32p



**Quatre sujets pour la barre d'appui.** Paris. 5-June/1936.  
Aquatint & drypoint [Variant of *Epreuve de la planche initiale*  
(Paul Éluard, *La Barre d'appui*)]. 31,5 x 21,7 cm. Sotheby's. #2,  
N10401, 07/24/20.

**OPP.36:501**

**Portrait de Nusch Éluard (Paul Éluard, La Barre d'appui).**  
Paris. 5-June/1936. Copper plate for *Portrait de Nusch Éluard*  
(Paul Éluard, *La Barre d'appui*). 16 x 10,9 cm. Musée Picasso,  
Paris. Don des héritiers Picasso en 1982.

**OPP.36:316**; MPP:1982.49





**dans la coupe ... (1) (2).** Paris. 6-June/1936. Graphite on blue Arches paper. 27 x 21 cm. Musée Picasso, Paris. Dation 1979.

**OPP.36:213;** MPP:3663.179r; AM.08:161p; CW.89:403p; PP.19:293p

**dans la coupe ... (3), au rideau détaché ... (1).** Paris. 6~7-June/1936. India ink on paper. 26,4 x 34,6 cm. Musée Picasso, Paris.

**OPP.36:137;** MPP:3663.181.01r; AM.08:162p; BP.21:239p; CW.89:139p





**dans la coupe serré ...** Paris. 6-June/1936. Typewritten on paper. 27,1 x 21,1 cm. Musée Picasso, Paris.

**OPP.36:413**; MPP:3663.180r

**au rideau détaché ... (2)**. Paris. 7-June/1936. India ink on Arches paper. 26,4 x 34,6 cm. Musée Picasso, Paris.

**OPP.36:236**; MPP:3663.181.03r; AM.08:163p





**Visage.** Paris. 7-June/1936. Gouache, pen & ink, wash & pencil on paper. 26,6 x 20,9 cm. Sotheby's. #605, L16005, 02/05/16.

**OPP.36:295**; GE.98a\*:26; JR.93\*:67

**au rideau détaché ... (3), rit l'ail ... (1) (Tête de cheval).** Paris. 7, 15-June/1936. Pen, India ink & gouache. [33,3 x 17,2] 33 x 17 cm. Musée Picasso, Paris. Dation 1979.

**OPP.36:058**; MPP:1168; PP.36:068; AB.05a:90; AB.06:120p; BP.21:241p; CK.04\*:65; CW.89:141p; MB.06\*:n/a; MP.88:1054; ND.01\*:75; PA.21g\*:137p; PD.06\*:252p; PP.19:65p; PP.20\*:184; SF.09:134p; UW.91\*:92; WR.80\*:341p





**Suite Vollard L097 (Faune dévoilant une dormeuse (VI)).** Paris. 12-June/1936. Etching & aquatint on Montval, edition 250. 36,8 x 44,5 cm. UCLA Grunwald Center for the Graphic Arts, Hammer Museum, Los Angeles. (Inv 1966.31.1). Gift of Mr. & Mrs. Grunwald. Also Kunstmuseum Picasso, Münster. (GMP.01.SV.B609). Collection Fondation Pierre Gianadda, Martigny.

**OPP.36:032;** B.I:230; Ba:609.6Bd; AL.95\*:n/a; AU.89\*:36; CH.68a\*:125; CH.97:53p; CK.04\*:70; CP.95:175p; DQ.74:216p; DT.78:54; ED.07\*:32; EM.55:193p; FC.00\*:64; GC.96:225p; GD.11\*:66; GG.87:52p; GM.81\*:87; GP.96:168p; HB.56:27; HR.89:34p; IS.98:96p; IW.93:31p; JC.01a\*:186; JC.01b\*:66; JC.01b\*:70; JM.07\*:38; JR.21:98p; JR.91:316p; KB.01\*:120; LA.16\*:46p; LS.75:50; MA.23c\*:26; MA.91c\*:n/a; MD.02\*:185p; MF.97:78p; MI.01\*:94; MM.04\*:193p; MS.04\*:n/a; MS.24\*:45; PD.93:33; PJ.14:12p; RP.06:121; RR.09\*:34; SD.05\*:93; SD.13a\*:158; TH.75:157; TO.14\*:55; TV.06:254p; UP.00:732; VC.94\*:n/a; VK.97\*:105p; WL.17\*:12; WR.72\*:150p; WR.80\*:332p; WR.96:161p; WW.91:26p; YB.08\*:V.40; YB.99\*:100; YR.00:30p

**Faune dévoilant une femme (V).** Paris. 12-June/1936. Sugar-lift & varnish aquatint, scraper & burin. 31,6 x 41,7 cm. Musée Picasso, Paris.

**OPP.36:093;** Ba:609.5B; P.IV:817







**Faune dévoilant une femme (I)**. Paris. 12-June/1936. Sugar-lift & varnish aquatint, scraper & burin. 31,6 x 41,7 cm. Musée Picasso, Paris. Dation 1979.

**OPP.36:254**; Ba:609.1; MPP:2526; P.IV:808; YB.99\*:99



**Faune dévoilant une femme (II)**. Paris. 12-June/1936. Sugar-lift & varnish aquatint, scraper & burin. 31,6 x 41,7 cm. Musée Picasso, Paris. Dation 1979.

**OPP.36:255**; Ba:609.2; MPP:2527; P.IV:809



**Faune dévoilant une femme (III).** Paris. 12-June/1936. Sugar-lift & varnish aquatint, scraper & burin. 31,6 x 41,7 cm. Musée Picasso, Paris. Dation 1979.

**OPP.36:256;** Ba:609.3; MPP:2528; P.IV:810

---

**Faune dévoilant une femme (IV).** Paris. 12-June/1936. Sugar-lift & varnish aquatint, scraper & burin. 31,6 x 41,7 cm. Musée Picasso, Paris. Dation 1979.

**OPP.36:257;** Ba:609.4; MPP:2529; P.IV:815; SY.11\*:n/a





**Faune dévoilant une femme (V)**. Paris. 12-June/1936. Sugar-lift & varnish aquatint, scraper & burin. 31,6 x 41,7 cm. Musée Picasso, Paris. Dation 1979.

**OPP.36:258**; Ba:609.5; MPP:2530; P.IV:816

**Faune dévoilant une dormeuse (Jupiter et Antiope, d'après Rembrandt)**. Paris. 12-June/1936. Copper plate for *Suite Vollard L097 (Faune dévoilant une dormeuse (VI))*. 32 x 42 cm. Musée Picasso, Paris. Don en 1980.

**OPP.36:534**; MPP:1980.28





**Faune dévoilant une dormeuse (Jupiter et Antiope, d'après Rembrandt) (VI).** Paris. 12-June/1936. Aquatint, scraper & burin. 31,5 x 41,5 cm. Musée Picasso, Paris.

**OPP.36:536**; Ba:609.6B; MPP:1982.86

**Faune dévoilant une dormeuse (Jupiter et Antiope, d'après Rembrandt) (VI).** Paris. 12-June/1936. Aquatint, scraper & burin. 31,6 x 41,6 cm. Musée Picasso, Paris.

**OPP.36:539**; Ba:609.6; MPP:2531





**Fête de la Bastille.** Paris. 13-June/1936. Pencil on six sheets pasted together. 68 x 67 cm. Musée Picasso, Paris. Dation 1979.

**OPP.36:181**; MPP:1167; P.IV:807; PP.36:069; BM.18\*:39; GU.00:5; HC.88:6.57; JR.21:100p; LU.93:72; SD.05\*:n/a; SN.98:71p; TO.04\*:11

**rit l'ail de sa couleur d'etoile ....** Paris. 15-June/1936. Typescript on paper. 27,2 x 21,1 cm. Musée Picasso, Paris.

**OPP.36:414**; MPP:3663.182r





**Jeune pêcheur Catalán (Recuerdo para los Viñes)**. Paris.  
26-June/1936. Pastel & India ink on Velin paper. 20 x 15,4 cm.  
Kunsthhaus Lempertz, Köln. #923, 882, 12/03/05.

**OPP.36:307**

**Danseuses et chevaux (Études)**. Paris.  
30-June/1936. Pencil & pen on paper. 34,5  
x 51,5 cm. Musée Picasso, Paris. Dation  
1979.

**OPP.36:182**; MPP:1169.v; PP.36:071;  
CK.04\*:n/a; LU.93:74; MB.06\*:n/a





**Feuille d'études: faune, nus, mains et marine.**  
Paris. 30-June/1936. Pen & ink on paper. 34,5 x 51,5 cm. Musée Picasso, Paris. Dation 1979.

**OPP.36:185**; MPP:1169.r; PP.36:070; CK.04\*:63;  
MB.06\*:n/a

---

**Quatre Sujets(Paul Éluard, La Barre d'appui) (I).** Paris.  
Post-June/1936. Aquatint & drypoint. 31,5 x 21,5 cm. Musée  
Picasso, Paris.

**OPP.36:540**; Ba:607.1; MPP:2736





**Note dédiée.** Paris. Post-3-July/1936. Ink on card. 12 x 15 cm. Sotheby's. #86, L03405, 12/09/03. Formerly Sotheby's. #160, L03402, 06/18/03.

**OPP.36:082**

**Maya au chapeau de papier.** Paris. 8-July/1936. Pastel, ink & gouache on paper. 51,4 x 34,4 cm. Fundación Almine & Bernard Ruiz-Picasso para el Arte.

**OPP.36:296**; MG.13\*:79p







**Texte aux crayons de couleur sur la première page du journal Marianne: Colombe (Dora mía).** Paris. Post-8-July/1936. Color pencil on front page of Marianne, 07/08/36. 38 x 54,5 cm. Musée Picasso, Paris. (Inv 515AP/H/49/6).

**OPP.36:283**; AB.00\*:111

**Faune et femme nue.** [Paris]. 27-July/1936. India ink on paper. 36,7 x 51 cm. Private collection.

**OPP.36:289**; GG.87:52p





**Portrait de femme (Marie-Thérèse Walter).** [Paris]. 28-July/1936. Pen, black ink & gray wash on paper. 51 x 33,9 cm. The Morgan Library & Museum, NYC. (Inv 2006.58). Eugene V. and Clare E. Thaw Collection. Formerly Marina Picasso Collection.

**OPP.36:183**; P.IV:811; PP.36:072; FC.08\*:15; ME.82a\*:73; MP.81\*:185; MP.85:3935; NY.06b\*:96; NY.85c\*:63; NY.94b\*:96; RP.11\*:212p; UP.00:748; WR.96\*:367p

---

**Couple enlacé.** [Paris]. 29-July/1936. India ink on paper. 34,5 x 51 cm. Private collection.

**OPP.36:184**; P.IV:813; PP.36:073; GL.89\*:7; WR.96:109p





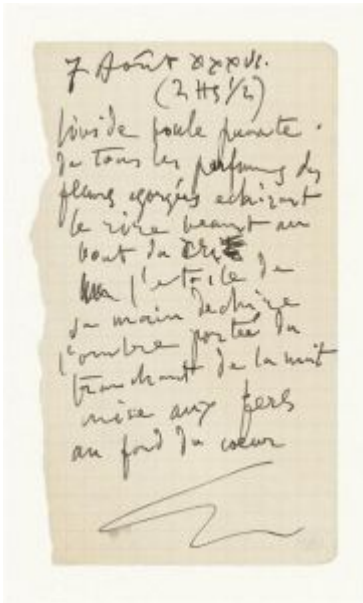
**Composition: Dora Maar et figure antique.**  
[Paris]. 1-August/1936. India ink wash on paper.  
34,5 x 51 cm. Private collection, Belgium.  
Courtesy Axel Vervoordt, Antwerpen. Formerly  
Dora Maar Collection.

**OPP.36:048**; P.IV:814; PP.36:074; Z.VIII:295;  
AB.06\*:37; DC.00:85; JR.21:87p; MC.00:85p;  
MD.02\*:216p; PA.98d\*:19; RP.11:41p;  
VO.16:85p; WR.96:386p

**Faune, cheval et oiseau.** Paris. 5-  
August/1936. India ink, watercolor &  
gouache on paper. 44,2 x 54,4 cm. Musée  
Picasso, Paris. Dation 1979.

**OPP.36:068**; MPP:1170; P.IV:818;  
PP.36:075; AB.06\*:46; CK.04\*:62;  
DQ.74:172p; GP.96:209p; IC.05\*:92;  
JC.01b\*:71; MA.08a\*:n/a; MB.06\*:n/a;  
ME.82a\*:75; MI.18\*:n/a; MN.80\*:n/a;  
PA.79a\*:533; PE.00\*:60; RD.00\*:112;  
RK.94:158p; UP.00:747; WR.80\*:335p;  
WW.91:378p





**livide boule puante ...** Paris. 7-August/1936. Black ink on squared paper. 14,6 x 8,2 cm. Musée Picasso, Paris. Acquisition 1998. Formerly Dora Maar Collection.

**OPP.36:343**; MPP:1998.33r; PP.19:171p

**Nu couché étoilé.** Paris. 12-August~2-October/1936. Oil on canvas. 130,6 x 162,5 cm. Musée National d'Art Moderne, Centre Georges Pompidou, Paris. (Inv AM.1984.633). Donation Louise et Michel Leiris, 1984.

**OPP.36:001**; P.IV:826; PP.36:075a; Z.VIII:310; AB.06\*:55; BA.22\*:45p; BA.23\*:177p; BS.55:143; DU.95\*:90p; JR.21:114p; LU.93:65p; MI.53\*:69; MJ.55\*:85; PD.09:304p; PW.65:76; RP.60\*:140; RP.81:15.5; UP.00:734; UW.91\*:94; WW.91:25p





**ahora nada mas ....** Paris. 13-August/1936. Blank page  
[Reverse of *disque rose du parfum ... (3)*, *rit l'ail ... (2)*, *ahora nada más ... (2)*]. 27 x 21,1 cm. Musée Picasso, Paris.

**OPP.36:420**; MPP:3663.184v

**ahora nada más ... (1)**. Paris. 13-August/1936. Pen &  
India ink on paper. 25,6 x 34,2 cm. Musée Picasso, Paris.

**OPP.36:454**; MPP:3663.183.01r



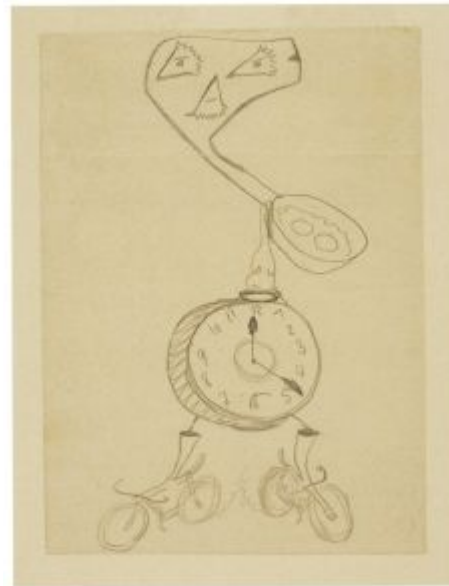


**ahora nada mas ....** Paris. 13-August/1936. Typescript on paper. 27,2 x 21,1 cm. Musée Picasso, Paris.

**OPP.36:415**; MPP:3663.185r

**Cadavre exquis (Avec Cécile et Paul Éluard et Man Ray)**. Cannes. [Mid-August]/1936. Pencil on paper. 19 x 13,5 cm. Musée d'Art et d'Histoire Paul Éluard, Saint-Denis. (Inv 95.04.01). Paul Éluard Collection.

**OPP.36:347**; BA.19c\*:26p



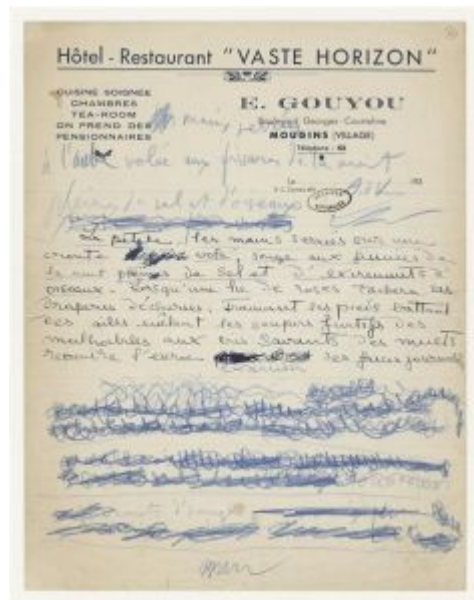


**Dora sur la plage (Portrait de femme).** [Mougins]. [Mid-August~20-September]/1936. Pencil on paper. [40,5 x 31,5] 40,3 x 31,6 cm. Sotheby's. #105, PF1956, 03/28/19. Formerly Sotheby's. #130, L16004, 02/04/16.

**OPP.36:052**; P.IV:830; PP.36:096; Z.VIII:313; MC.00:92p; PA.98d\*:11

**mains serrées ...** Mougins. [Mid-August~20-September]/1936. Blue ink & blue pencil on headed paper of the hotel-restaurant Vaste Horizon. 26,9 x 21 cm. Musée Picasso, Paris.

**OPP.36:277**; MPP:1998.373r; AB.06:126p





**Carte postale de Éluard, Picasso, Nusch, Cécile Eluard, Man Ray, Roland Penrose, Christian et Yvonne Zervos adressée à René Char.** Mougins. [20-August]/1936. Ink on postcard. S/U. Sotheby's. #79, PF1403, 06/19/14.

**OPP.36:286**

**Portrait de Nusch Éluard.** Paris. 20-August/1936. Pencil on paper. 23,3 x 14,5 cm. Mayor Gallery, London.

**OPP.36:354**; BA.19c\*:134p







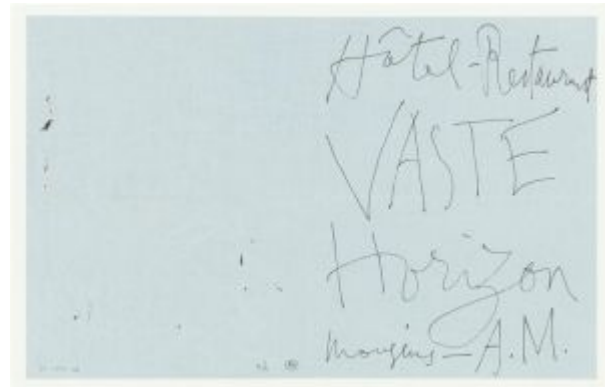
**Portrait de Cécile Éluard.** Mougins. [Late-August]/1936. Pencil, color pencil & scratching on paper. 64 x 53 cm. Private collection.

**OPP.36:260**; BA.19c:204p

---

**Inscription.** Mougins. [Late-August~20-September]/1936. Black ink on blue paper. 17,9 x 28,2 cm. Musée Picasso, Paris. Acquisition 1998. Formerly Dora Maar Collection.

**OPP.36:278**; MPP:1998.62r; AB.06:127p; PP.19:174p





**Portrait de Dora Maar.** [Mougins]. [End-August~20-September]/1936. Pencil on drawing pad sheet. 32 x 23,5 cm. Private collection. Formerly Dora Maar Collection.

**OPP.36:049**; P.IV:834; MC.00:90p; PA.98d\*:109; TF.01:3

---

**Portrait de Dora Maar.** [Mougins]. [End-August~20-September]/1936. Pencil on torn tracing paper. 32 x 14 cm. Private collection. Formerly Dora Maar Collection.

**OPP.36:050**; MC.00:90p; PA.98d\*:110





**Ruines de maisons.** Mougins. [End-August~20-September]/1936. Black ink on blue paper. 18 x 28,2 cm. Musée Picasso, Paris. Acquisition 1998. Formerly Dora Maar Collection.

**OPP.36:279**; MPP:1998.62v; AB.06:127p; BP.21:557p; PP.19:174p

---

**si l'attendrissant souvenir ....** Mougins. September/1936. Black pencil on envelope. S/U. Musée Picasso, Paris.

**OPP.36:310**





**si l'attendrissant souvenir ....** Mougins. September/1936. Black pencil on envelope. S/U. Musée Picasso, Paris.

**OPP.36:311**

---

**Dora et le Minotaure.** Mougins. [1] 5-September/1936. Charcoal, India ink, crayons & scraper on paper. 40,5 x 72 cm. Musée Picasso, Paris. Formerly Dora Maar Collection.

**OPP.36:036**; MPP:1998.308; P.IV:820; PP.36:076; Z.VIII:296; AB.06\*:38; BP.21:831p; DW.05:74p; GC.07:107p; GG.87:52p; JC.01a\*:187; JR.21:n/p; LB.17:172-173p; MB.06\*:n/a; MC.00:97p; MS.04:17p; PA.98d\*:21; PD.06\*:96p; PE.00\*:61; PP.20\*:193; TK.04\*:n/a; VC.13:33; WR.96:87p





**Sabartés tu que conoces ....** Paris. 9-September/1936.  
Typescript on paper. 27 x 20,9 cm. Musée Picasso, Paris.

**OPP.36:394**; MPP:3663.145r



**Sabartés tu que conoces ....** Paris. 9-September/1936. Typescript on paper. 27 x 20,9 cm. Musée Picasso, Paris.

**OPP.36:395**; MPP:3663.146r



**Portrait de Dora Maar ('Fait par cœur')**. Mougins. 11-September/1936. Blue ink on paper. 27 x 21 cm. Private collection. Formerly Dora Maar Collection.

**OPP.36:043**; P.IV:819; PP.36:077; Z.VIII:289; JR.21:109p; MC.00:6p; PA.98d\*:30

---

**Dora Maar en robe à pois**. [Mougins]. 14-September/1936. Pencil & stump drawing. 37 x 27 cm. Sotheby's. #118, PF0006, 03/27/20. Formerly Dora Maar Collection.

**OPP.36:046**; P.IV:821; PP.36:078; Z.VIII:298; AB.06\*:31; MC.00:81p; PA.98d\*:24





**Le République.** Paris. 22-September/1936. Blue crayon on printed impression. 15,5 x 17,3 cm. Musée Picasso, Paris. (Inv 515AP/H/21/30).

**OPP.36:571**; JR.21:112p; LE.21\*:36

**Dora Maar aux ongles verts.** Paris. Fall/1936. Oil on canvas. 65 x 54 cm. Nationalgalerie, Museum Berggruen, Staatlichen Museen zu Berlin. Formerly Dora Maar Collection.

**OPP.36:045**; P.IV:844; PP.36:093; Z.VIII:303; BL.06\*:139p; CB.11:160p; GC.07:108p; JR.21:n/p; LB.17:19p; MC.00:56p; OW.13:302p; PA.98d\*:17; RP.11:38p





**Femme aux bras levés.** Paris. Fall/1936. Oil, charcoal & sand on canvas. 50 x 61 cm. Museo Picasso, Málaga. Gift of Bernard Ruiz-Picasso.

**OPP.36:083**; MPM:2.138.B; P.IV:812; PP.36:098; DD.61:216p; DP.20\*:103; GA.00\*:58; GS.03:1.19; JL.13\*:18; NC.17\*:84

---

**Portrait de Dora Maar, de profil (Avec Dora Maar).** Paris. Fall~Winter/1936~1937. Gelatin silver print. 30 x 24 cm. Musée Picasso, Paris.

**OPP.36:292**; MPP:1998.335; JR.14:253p; PP.20\*:325







**Dora Maar, de trois-quarts.** Paris. Fall~Winter/1936~1937. Gelatin silver print. S/U. Musée Picasso, Paris. Formerly Dora Maar Collection.

---

**OPP.36:164**

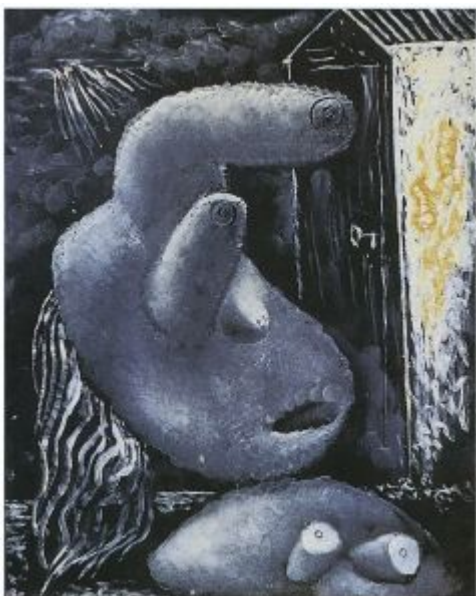
---

**Portrait de Dora Maar, de profil (VII) (Avec Dora Maar).** Paris. Fall~Winter/1936~1937. Gelatin silver print from cliché-verre. 29,8 x 23,9 cm. Musée Picasso, Paris.

---

**OPP.36:259**; MPP:1987.145; AB.97b\*:239; WR.96:202p





**Jeune fille devant une cabine de bain (Avec Dora Maar).**  
Paris. Fall~Winter/1936~1937. Oil on glass plate. 30 x 24 x  
0.2 cm. Musée Picasso, Paris. Formerly Dora Maar Collection.

**OPP.36:261**; MC.00:116p; PA.98d\*:A1



**Jeune fille devant une cabine de bain (Avec Dora Maar).**  
Paris. Fall~Winter/1936~1937. Gelatin silver  
contact print. 29,8 x 25,9 cm. Musée Picasso, Paris.  
Formerly Dora Maar Collection.

**OPP.36:262**; MPP:1998.325; AB.06\*:50;  
MC.00:116p; PA.98d\*:A2



**Portrait de Dora Maar, de profil (Avec Dora Maar).**  
Paris. Fall~Winter/1936~1937. Oil on glass. 30 x 24 x 0.2  
cm. Musée Picasso, Paris.

**OPP.36:263**; MC.00:119p



**Portrait de Dora Maar, de profil (V) (Avec Dora Maar).** Paris. 1936~1937. Gelatin silver contact  
print. [29,8 x 25,7] 30 x 24 cm. Musée Picasso, Paris.

**OPP.36:264**; MPP:1998.337; AB.97b\*:237;  
MC.00:119p



**Portrait de Dora Maar, de profil (Avec Dora Maar).** Paris. Fall~Winter/1936~1937. Gelatin silver print. 30 x 24 cm. Musée Picasso, Paris. Formerly Dora Maar Collection.

**OPP.36:270**; MPP:1998.336; AB.06\*:21; JR.14:253p; PA.21g\*:143p

---

**Portrait de Dora Maar, de trois-quarts (Avec Dora Maar).** Paris. Fall~Winter/1936~1937. Gelatin silver print from glass plate. 30 x 24 cm. Musée Picasso, Paris. Markovitch Gift in lieu. Dora Maar Collection.

**OPP.36:274**; MPP:1998.311; AB.06\*:26; AB.46:195p; JR.14\*:256p





**Portrait de Dora Maar, de trois-quarts (IV) (Avec Dora Maar)**. Paris. Fall~Winter/1936~1937. Gelatin silver print from glass plate. 30 x 24 cm. Musée Picasso, Paris. Markovitch Gift in lieu. Dora Maar Collection.

**OPP.36:275**; MPP:1998.329; AB.06\*:27

---

**Jeune fille devant une cabine de bain (III) (Avec Dora Maar)**. Paris. Fall~Winter/1936~1937. Gelatin silver print. 29,9 x 23,8 cm. Musée Picasso, Paris.

**OPP.36:288**; MPP:1998.326; BA.23\*:192p





**Portrait de Dora Maar, de profil (Avec Dora Maar).** Paris. Fall~Winter/1936~1937. Cliché verre (Oil on glass). 30 x 24 x 2 cm. Musée Picasso, Paris.

**OPP.36:290**; JR.14:252p

---

**Portrait de Dora Maar, de profil (Avec Dora Maar).** Paris. Fall~Winter/1936~1937. Gelatin silver print. 30 x 24 cm. Musée Picasso, Paris.

**OPP.36:291**; JR.14:253p





**Portrait de Dora Maar, de trois-quarts (V) (Avec Dora Maar)**. Paris. Fall~Winter/1936~1937. Gelatin silver print. 29,5 x 23,5 cm. Musée Picasso, Paris. Formerly Dora Maar Collection.

**OPP.36:293**; MPP:1998.330

**Portrait de Dora Maar, de profil (Avec Dora Maar)**. Paris. Fall~Winter/1936~1937. Gelatin silver print. 30 x 24 cm. Musée Picasso, Paris.

**OPP.36:294**; MPP:1998.319; JR.14:253p;  
LO.19b\*:160





**Jeune fille devant une cabine de bain (Avec Dora Maar)**. Paris. Fall~Winter/1936~1937. Matrix for *Jeune fille devant une cabine de bain (Avec Dora Maar)*. 30 x 24 cm. Musée Picasso, Paris.

**OPP.36:319**; MPP:1998.314; BA.23\*:n/a

---

**Dora Maar de trois quarts (Avec Dora Maar)**. Paris. Fall~Winter/1936~1937. Glass plate. 30 x 24 cm. Musée Picasso, Paris. Formerly Dora Maar Collection.

**OPP.36:320**; MPP:1998.316







**Portrait de Dora Maar, de profil (Avec Dora Maar).** Paris. Fall~Winter/1936~1937. Glass plate. 30 x 24 cm. Musée Picasso, Paris. Formerly Dora Maar Collection.

**OPP.36:321**; MPP:1998.322; PP.20\*:324



**Portrait de Dora Maar, de face (Avec Dora Maar).** Paris. Fall~Winter/1936~1937. Glass plate. 30 x 24 cm. Musée Picasso, Paris. Formerly Dora Maar Collection.

**OPP.36:322**; MPP:1998.320



**Portrait de Dora Maar, de trois-quarts (II) (Avec Dora Maar)**. Paris. Fall~Winter/1936~1937. Gelatin silver print. 29,5 x 23,5 cm. Musée Picasso, Paris. Formerly Dora Maar Collection.

**OPP.36:323**; MPP:1998.327; PA.98d\*:B2



**Portrait de Dora Maar, de trois-quarts (III) (Avec Dora Maar)**. Paris. Fall~Winter/1936~1937. Gelatin silver print. 24 x 18 cm. Musée Picasso, Paris.

**OPP.36:324**; MPP:1998.328



**Portrait de Dora Maar, de face (III) (Avec Dora Maar).**  
Paris. Fall~Winter/1936~1937. Gelatin silver print. 29,9 x 24  
cm. Musée Picasso, Paris.

**OPP.36:325**; MPP:1998.332; BA.19b\*:119p



**Portrait de Dora Maar, de face (II) (Avec Dora  
Maar).** Paris. Fall~Winter/1936~1937. Gelatin silver  
print. 29,7 x 24 cm. Musée Picasso, Paris. Formerly  
Dora Maar Collection.

**OPP.36:326**; MPP:1998.321; BA.19b\*:109p;  
PA.98d\*:C



**Jeune fille devant une cabine de bain (I) (Avec Dora Maar)**. Paris. Fall~Winter/1936~1937. Gelatin silver print. 29,9 x 24 cm. Musée Picasso, Paris.

**OPP.36:335**; MPP:1998.315



**Portrait de Dora Maar, de profil (I) (Avec Dora Maar)**. Paris. Fall~Winter/1936~1937. Gelatin silver print. 30 x 23,7 cm. Musée Picasso, Paris. Formerly Dora Maar Collection.

**OPP.36:336**; MPP:1998.323; PA.98d\*:D



**Portrait de Dora Maar, de face (I) (Avec Dora Maar).**  
Paris. Fall~Winter/1936~1937. Gelatin silver print. 30 x 23,9  
cm. Musée Picasso, Paris. Formerly Dora Maar Collection.

**OPP.36:339**; MPP:1998.318; BA.19b\*:109p

---

**Portrait de femme vue de trois-quarts (Dora Maar).** Paris. Fall~Winter/1936~1937. Oil on glass.  
30 x 24 x 0.2 cm. Private collection. Formerly Dora Maar Collection.

**OPP.36:581**; PA.98d\*:B1





**Portrait de Dora Maar, de face (IV) (Avec Dora Maar).**  
Paris. Fall~Winter/1936~1937. Gelatin silver print. 29,5 x 23  
cm. Musée Picasso, Paris. Markovitch Gift in lieu. Dora Maar  
Collection.

**OPP.36:272**; MPP:1998.333; AB.06\*:23; AB.97b\*:236;  
BA.19b\*:119p; BM.05:101p; JR.14\*:255p

**Portrait de Dora Maar.** Paris. 27-September/1936.  
Pencil. 27 x 21 cm. Private collection. Formerly Dora  
Maar Collection.

**OPP.36:186**; P.IV:824; PP.36:079; Z.VIII:291;  
PA.98d\*:83





**Dora Maar en femme oiseau.** Paris. 28-September/1936.  
Lead pencil & ink wash on blue paper. 21 x 27 cm. Private  
collection. Formerly Dora Maar Collection.

**OPP.36:051**; P.IV:825; PP.36:080; Z.VIII:297; AB.06\*:53;  
GG.87:53p; MC.00:91p; PA.98d\*:105; VC.13:32; WR.96:387p

---

**Portrait de Dora Maar au chignon II.** Paris.  
October/1936. Burin & srypoint. 34,7 x 24,7 cm. Musée  
Picasso, Paris.

**OPP.36:538**; Ba:612; MPP:1990.120





**Femme nue couchée.** Paris. 2-October/1936.  
Pen & watercolor. 17,3 x 26,1 cm. E. W. K.  
Collection, Bern.

**OPP.36:060**; P.IV:827; LU.93:173; UW.91\*:93

**misérable peau de chagrin ... (2).** Paris. 3-  
October/1936. India ink on blue paper. 27 x 21 cm.  
Musée Picasso, Paris.

**OPP.36:234**; MPP:3663.186r; AM.08:124p





9 Octobre XXXVI.

X

Misérable peau de chagrin ... (1)

Paris. 3, 10-October/1936. India Ink on Arches paper. 25,8 x 17 cm.

Musée Picasso, Paris.

**misérable peau de chagrin ... (1); chair en décomposition ....**  
 Paris. 3, 10-October/1936. India Ink on Arches paper. 25,8 x 17 cm.  
 Musée Picasso, Paris.

**OPP.36:138;** MPP:3663.03/10/36; MPP:3663.189r; AM.08:125p;  
 BP.21:243p; CW.89:142p

**dans le tableau du 30 avril ... (1).** Paris. 6-  
 October/1936. India ink on blue paper. S/U. Musée  
 Picasso, Paris.

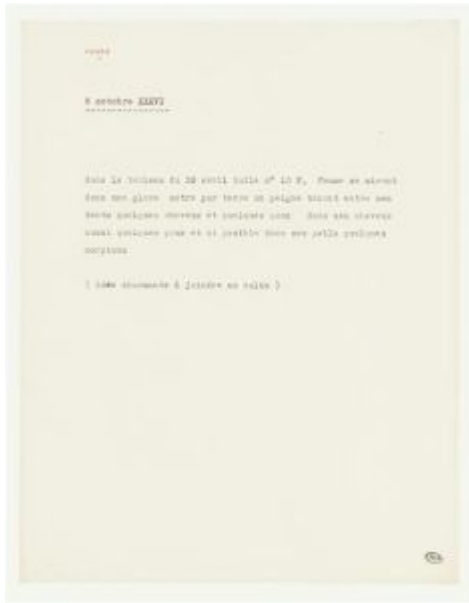
**OPP.36:139;** MPP:3663.061036; MPP:3663.187r;  
 P.IV:793; CW.89:143p

6 Octobre XXXVI.

Paris. 6-October/1936. India ink on blue paper. S/U. Musée  
 Picasso, Paris.

dans le tableau du 30 avril ... (1)

Paris. 6-October/1936. India ink on blue paper. S/U. Musée  
 Picasso, Paris.



**dans le tableau ....** Paris. 6-October/1936. Typscript on paper. 27 x 21 cm. Musée Picasso, Paris.

**OPP.36:403**; MPP:3663.188r

**portant nouée à son cou ... (1).** Le Tremblay-sur-Mauldre. 9~11-October/1936. Pen & India ink with tinted wash on blue laid paper. 27 x 21 cm. Musée Picasso, Paris. Dation 1979.

**OPP.36:140**; MPP:1171; PP.36:081; AB.05a:89; AB.05b\*:42; AB.06:165p; BM.18\*:55; BP.21:245p; CW.89:144p; JC.01a:111p; KB.04:29p; MB.06\*:n/a; MG.13:31p; PD.06\*:260p; PP.19:195p; TK.04\*:n/a





**chair en décomposition ...** Paris. 10-October/1936. Pen, watercolor & gouache [Oic]. 33 x 17 cm. Musée Picasso, Paris.

OPP.36:059; CW.89:403p; UW.91\*:93



**agite folle ses draps ... (1)**. Paris. 11-October/1936. Black ink & color pencil on blue watermarked paper. 27 x 20,8 cm. Musée Picasso, Paris. Acquisition 1998. Formerly Dora Maar Collection.

OPP.36:344; MPP:1998.32.1r; BP.21:246p; PP.19:173p



**agite folle ses draps ... (2); perdant à chaque coin ...** Paris. 11~13-October/1936. Pen & India ink on paper. 26 x 34,5 cm. Musée Picasso, Paris.

OPP.36:467; MPP:3663.190.01r

**agite folle ses draps ... (3); mathématiquement pure image ... (4); spleen du quart de brie ... (3); l'une anonyme à l'autre ... (3).** Paris. 11-October, 4, 11, 12-November/1936. India ink on blue paper. 27 x 21,1 cm. Musée Picasso, Paris. Dation 1979.

OPP.36:233; MPP:3663.191r; AM.08:123p; PP.19:172p





**agite folle ...** Paris. 11-October/1936. Typewritten on paper. 27 x 21 cm. Musée Picasso, Paris.

**OPP.36:404; MPP:3663.192.01r**



**agite folle ...** Paris. 11-October/1936. Typewritten on paper. 27,2 x 21,1 cm. Musée Picasso, Paris.

**OPP.36:405; MPP:3663.192.03**



**portant noué à son cou ....** Paris. 11-October/1936.  
Typescript on paper. 27,2 x 21,1 cm. Musée Picasso, Paris.

**OPP.36:406**; MPP:3663.193.01r

**perdant à chaque coin ....** Paris. 13-  
October/1936. Pen & India ink on paper. 26 x  
34,5 cm. Musée Picasso, Paris.

**OPP.36:468**; MPP:3663.190.03r





**Portrait de Dora Maar.** Paris. 20-October/1936. Black ink on blue paper. 27 x 21 cm. Sotheby's. #8, PF1616, 12/07/16. Formerly Dora Maar Collection.

**OPP.36:047**; P.IV:829; PP.36:082; Z.VIII:293; MC.00:84p; PA.98d\*:115

---

**Portrait de Dora Maar au chignon I.** Paris. 21-October/1936. Drypoint on Richard de Bas, edition of 68. 34,3 x 24,8 cm. Museo Picasso, Málaga. Adquisición 2010. Also Christie's. #221, 1074, 05/01/02.

**OPP.36:042**; B.I:291; Ba:611.Ba; MPM:3.39; JR.12:168p; MG.13\*:85p; NC.17\*:85





**Portrait de Dora Maar au chignon I.** Paris. 21-October/1936. Drypoint. 35 x 24,7 cm. Musée Picasso, Paris.

**OPP.36:537**; Ba:611; MPP:1990.119

---

**Portrait de Dora Maar au chignon I.** Paris. 21-October/1936. Drypoint. 34,8 x 24,8 cm. Sotheby's. #128, L19164, 10/17/19. Formerly Marina Picasso Collection.

**OPP.36:577**; Ba:611.BaB







**Portrait de Dora Maar au chignon II.** Paris. [End]/October/1936. Drypoint on Richard de Bas, edition 69. 34,3 x 24,8 cm. Museo Picasso, Málaga. Adquisición 2010. Also Artcurial. #182, 1649, 06/03/09.

**OPP.36:085**; B.I:292; Ba:612.Ba; MPM:3.40; MG.13\*:84p

---

**tableau du quart d'azur.** Paris. 26-October/1936. Envelope. S/U. Musée Picasso, Paris.

**OPP.36:308**





**Portrait du père de l'artiste et profil de femme.** Paris. [28-October]/1936. Pencil on paper. 21 x 27 cm. Private collection. Formerly Dora Maar Collection.

**OPP.36:573**; PA.98d\*:75

---

**Buste de Dora Maar.** Paris. [Fall] November/1936. Oil on canvas. 65 x 54 cm. Private collection. Formerly Dora Maar Collection.

**OPP.36:033**; P.IV:831; PP.36:095; Z.VIII:307; MC.00:80p; PA.98d\*:29; WR.96:388p





**Portrait de Dora Maar en buste de profil.** Paris. [November]/1936. Pencil & estompe on paper. 40,5 x 32,7 cm. Sotheby's. #118, N09140, 05/08/14. Formerly Dora Maar Collection.

**OPP.36:191**; PP.36:089; Z.VIII:294; PA.98d\*:40

---

**Buste de femme (Dora Maar).** Paris. [November]/1936 [19-January/1939]. Oil on canvas. [55 x 46] 54,5 x 38 cm. Museum Sammlung Rosengart, Luzern.

**OPP.36:195**; PP.36:094; Z.VIII:306; AB.06\*:100; CH.10\*:201p; MD.02\*:233p; PA.98d\*:14; WR.96:388p





**Portrait de Dora Maar.** Paris. [November]/1936. Pencil. 40,5 x 41,5 cm. Private collection.

**OPP.36:196**; P.IV:849; PP.36:097; Z.VIII:314

**mathématiquement pure image ... (1) (2) (3), spleen du quart de brie ... (2), l'une anonyme à l'autre ... (2).** Paris. 4, 11, 12-November/1936. Pen & India ink on Arches paper folded in two. 25,7 x 34,5 cm. Musée Picasso, Paris. Dation 1979.

**OPP.36:094**; MPP:3663.121; MPP:3663.194.01r; AM.08:95p; BP.21:823p; CW.89:150p; PP.19:285p





**matématiquement ....** Paris. 4-November/1936. Typescript on paper. 27 x 21 cm. Musée Picasso, Paris.

**OPP.36:407**; MPP:3663.195r

**Portrait de Dora Maar.** [Paris]. 6-November/1936. Pencil. 39,4 x 30,4 cm. James W. and Marilyn Alsdorf Collection, Chicago.

**OPP.36:187**; P.IV:828; PP.36:083; Z.VIII:299; CH.68a\*:92; GT.81\*:80





**Dora Maar sur la plage.** Paris. 7-November/1936. Oil on canvas. 65 x 54 cm. Private collection. Formerly Dora Maar Collection.

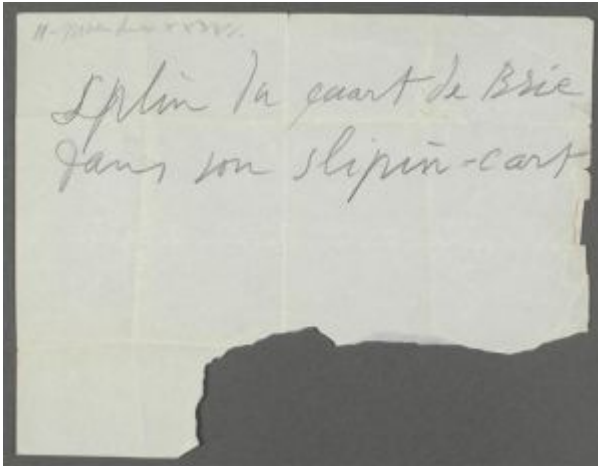
**OPP.36:044**; P.IV:833; PP.36:084; Z.VIII:317; AB.06\*:101; GC.07:105p; JR.21:108p; LB.17:171p; MC.00:93p; MR.59\*:39; PA.98d\*:8

---

**Portrait de Dora Maar.** [Paris]. 11-November/1936. Oil on canvas. [65 x 54] 66 x 53,3 cm. Sotheby's. #85, 11/08/95.

**OPP.36:188**; P.IV:832; PP.36:085; Z.VIII:305; PD.65:175p; WR.96:388p





**spleen du quart de Brie ... (1)**. Paris. 11-November/1936. Ink on paper. S/U. Musée Picasso, Paris.

**OPP.36:313**

**splin du quart de brie ....** Paris. 11-November/1936. Typescript on paper. 27 x 21 cm. Musée Picasso, Paris.

**OPP.36:408**; MPP:3663.196r





**spleen du quart de Brie ... (1)**. Paris. 12-  
November/1936. Pen & ink on paper. 6 x 18 cm.  
Musée Picasso, Paris. Acquisition 1998. Formerly  
Dora Maar Collection.

**OPP.36:346**; MPP:1998.63r; PP.19:283p

---

**l'une anonyme ....** Paris. 12-November/1936.  
Typescript on paper. 27 x 21 cm. Musée Picasso, Paris.

**OPP.36:409**; MPP:3663.197r







**Portrait de Dora Maar (Dora Maar à la coiffe).** Paris. 13-November/1936. Brush & ink, wash & pencil on paper. 40,5 x 31,5 cm. Sotheby's. #35, L14002, 02/05/14. Formerly Jan and Marie-Anne Krugier-Poniatowski Collection; Dora Maar Collection.

**OPP.36:189**; P.IV:840; PP.36:086; Z.VIII:300; BR.99\*:137; KB.01\*:118; MA.00d\*:181; MU.07a\*:190; PA.02e\*:162; PA.98d\*:15; PA.98d\*:n/a; VE.99\*:151; VI.05\*:157

**Portrait de Dora Maar.** Paris. 18-November/1936. Pencil. 27 x 21 cm. Private collection. Formerly Dora Maar Collection.

**OPP.36:190**; P.IV:841; PP.36:088; Z.VIII:292; PA.98d\*:38





**Portrait de Dora Maar de profil.** Paris. 18-November/1936. Pen & black ink on blue paper. [21 x 27] 22,9 x 26,9 cm. Bonhams. #10AR, 20726, 06/18/13. Formerly Dora Maar Collection.

**OPP.36:192**; P.IV:843; PP.36:087; Z.VIII:290; PA.98d\*:39; PA.98d\*:n/a

---

**Buste de Dora Maar.** Paris. 19-November/1936. Oil on canvas. 65 x 54 cm. Private collection, Paris.

**OPP.36:034**; P.IV:845; PP.36:090; Z.VIII:302; FG.64:238p; GC.96:28p; JL.71:248p; JM.93:89p; MC.00:8p; PD.65:164p; RS.88:126p; TC.92:94p; TI.71:37; UP.00:749; WR.96:389p; YR.00:33p





**Dora Maar assise de profil.** Paris. 24-November/1936. Oil on canvas. 64,5 x 54 cm. Private collection. Formerly Dora Maar Collection.

**OPP.36:193**; P.IV:842; PP.36:091; Z.VIII:301; AB.06\*:33; KB.01\*:119; MG.13\*:83p; PA.98d\*:26

**Buste de Dora Maar.** Paris. 27-November/1936. Oil on wood panel [OïC]. 48 x 34,5 cm. Private collection.

**OPP.36:194**; P.IV:847; PP.36:092; Z.VIII:304; WR.96:388p





**Nature morte au citron et aux oranges.** Le Tremblay-sur-Mauldre. [Fall] 7-December/1936. Oil on canvas. 54 x 65 cm. Musée National d'Art Moderne, Centre Georges Pompidou, Paris. (Inv AM.2728P). Don de l'artiste 1947.

**OPP.36:031**; PP.36:099; Z.IX:92; BA.18\*:188p; CE.04\*:7; EH.96:103p; EM.55:177p; GP.96:210p

---

**Nature morte.** Le Tremblay-sur-Mauldre. 8-December/1936. Oil on canvas. 46,4 x 61,2 cm. Marina Picasso Collection. (Inv 12731). Courtesy Galerie Jan Krugier, Geneva.

**OPP.36:006**; PP.36:100; Z.VIII:328; DD.61:219; GP.96:207p; MP.81\*:186; PA.44a\*:n/a





**Nature morte: poissons et poêle.** Le Tremblay-sur-Mauldre. 8-December/1936. Oil & Ripolin on canvas. [50 x 61] 49,8 x 61,3 cm. Sotheby's. #60, N10948, 05/17/22. Formerly Christie's. #44, 7599, 06/24/08.

**OPP.36:216**; P.IV:1251; PP.38:187; Z.IX:236; GE.63a\*:28; JB.92:23p; RP.60\*:156

---

**Nature morte aux poires.** [Le Tremblay-sur-Mauldre]. 14-December/1936. Oil on canvas. 33 x 44 [46] cm. Private collection.

**OPP.36:007**; PP.36:101; DD.61:219; RP.11\*:228p





**Compotier de poires.** [Le Tremblay-sur-Mauldre]. 15-December/1936. Oil on canvas. [36,8 x 59,7] [38,1 x 61] 38 x 61 cm. Tate Modern, London. (Inv T03572). Formerly Mrs. A. F. Kessler Collection, Preston, Rutland.

**OPP.36:089**; P.IV:854; PP.36:102; Z.VIII:311; JM.93:92p; LO.39b\*:3; LO.84c\*:n/a; NY.48j\*:24; RP.60\*:141; RS.88:119p; YK.48\*:9

---

**Nature morte au bougeoir, oiseau mort et livre ouvert.** [Le Tremblay-sur-Mauldre]. 16-December/1936. Oil on canvas [OiC]. 46 x 54 cm. Sotheby's. #95, 11/27/95.

**OPP.36:197**; P.IV:855; PP.36:103; Z.VIII:312; JB.92:203p; LG.81:388; LU.93:179





**La mansarde du poète.** [Le Tremblay-sur-Mauldre]. 18-December/1936. Oil & charcoal on canvas. 97,2 x 130,2 cm. The Metropolitan Museum of Art, NYC. (Inv 1997.149.3). The Mr. and Mrs. Klaus G. Perls Collection, 1997.

**OPP.36:002**; PP.36:104; Z.VIII:309; CG.12\*:56; GT.10\*:81; HU.68\*:46; JL.66\*:168; KY.02\*:61; NY.00a\*:107p; SN.98\*:1; SP.53\*:32; TK.64\*:164; TK.77a\*:45; TO.64\*:164; VI.68b\*:42

---

**Marie-Thérèse Walter au chapeau.** Le Tremblay-sur-Mauldre. 19-December/1936. Oil on canvas. 46 x 38 cm. Beatrice and Philip Gersh Collection.

**OPP.36:039**; PP.36:105; DD.61:219; WW.94\*:122





**Femme accoudée endormie: Marie-Thérèse.** Paris.  
End/1936~Early/1937. Burin & scraper. 23,6 x 19,6 cm. Musée  
Picasso, Paris.

**OPP.36:542**; Ba:613.3B; MPP:2765

**Nature morte à la guitare.** [Le Tremblay-  
sur-Mauldre]. [Winter]/1936~1937. Oil on  
canvas. 54 x 65 cm. Private collection.

**OPP.36:248**; JL.51:82; JS.46:18







**Femme accoudée endormie: Marie-Thérèse (I).** [Le Tremblay-sur-Mauldre]. End/1936~Early/1937. Halftone print on thin glossy wove paper. 24,4 x 20,4 cm. Musée Picasso, Paris. Dation 1979.

**OPP.36:276**; MPP:2763

---

**Femme accoudée endormie: Marie-Thérèse (III).** [Le Tremblay-sur-Mauldre]. End/1936~Early/1937. Burin & scraping. 23,6 x 19,5 cm. Musée Picasso, Paris.

**OPP.36:329**; Ba:613.3; MPP:2764





**Femme accoudée endormie: Marie-Thèrese.** [Le Tremblay-sur-Mauldre]. End/1936~Early/1937. Halftone print on thin glossy wove paper [On an illustration of *Femme endormie*]. 24 x 20 cm. Christie's. #146, 2351, 10/26-27/10.

**OPP.36:330**; Ba:613.3Bd

---

**Nature morte au pichet.** Paris. [Winter]/1936. Oil on canvas. 46,4 x 61,2 cm. Private collection.

**OPP.36:520**





**Nature morte au compotier.** [Le Tremblay-sur-Mauldre]. 22-December/1936. Oil on canvas. 27 x 41 cm. The Picasso Estate.

**OPP.36:010**; P.IV:852; PP.36:106; DD.61:116p

---

**Nature morte au compotier et au verre.** [Le Tremblay-sur-Mauldre]. 22-December/1936. Oil on canvas. 27 x 35 cm. Private collection.

**OPP.36:198**; PP.36:107; DD.61:219p; LE.07\*:18





**Figure de femme debout.** Paris. 27-December/1936. Oil, gouache, pencil & watercolor on paper. 40,4 x 31,4 cm. Sotheby's. #167, L06006, 02/08/06. Formerly Dora Maar Collection.

**OPP.36:097**; P.IV:851; PP.36:110; Z.VIII:316; PA.98d\*:79

---

**Tête de Dora Maar.** Paris. 27-December/1936. Oil on paper. 40,5 x 31,5 cm. Private collection. Formerly Dora Maar Collection.

**OPP.36:199**; P.IV:848; PP.36:108; Z.VIII:308; PA.98d\*:32





**Tête de Dora Maar.** Paris. 27-December/1936. Oil on canvas. 55 x 46 cm. Private collection. Formerly Dora Maar Collection.

**OPP.36:200**; P.IV:850; PP.36:109; Z.VIII:319; PA.98d\*:25

---

**Femme au piano II.** [Paris]. 28-December/1936. Pencil on blue paper. 27 x 21 cm. Private collection.

**OPP.36:062**; BA.03a\*:172; LU.93:78; UW.91\*:95a





**Femme au piano III.** [Paris]. 28-December/1936. Pencil on blue paper [OIC]. 27 x 21 cm. Private collection.

**OPP.36:063**; BA.03a\*:173; UW.91\*:95b

---

**Femme au piano IV.** [Paris]. 28-December/1936. Pencil. S/U. The Picasso Estate.

**OPP.36:064**; UW.91\*:95c





**Femme au piano.** [Paris]. 29-December/1936. Graphite on blue paper. 27 x 21 cm. Musée Picasso, Paris. Dation 1979.

**OPP.36:061**; MPP:1172; PP.36:111; BM.18\*:16; LU.93:36; MP.88:1059; PA.20j\*:141; PD.06\*:258p; PE.01a:153p; TK.04\*:n/a; UW.91\*:95

---

**Nature morte à la lampe.** [Paris]. 29-December/1936. Oil on canvas. 97 x 130 cm. Musée Picasso, Paris. Dation 1979.

**OPP.36:084**; MPP:157; P.IV:853; PP.36:112; BM.18\*:62; BU.22\*:131; CE.04\*:6; DD.61:219p; JB.92:203p; JR.21:118p; MP.85:135; PA.19d\*:87; PA.79a\*:256; UP.00:750





**Nature morte: corbeille de fruits et bouteille.**

[Le Tremblay-sur-Mauldre]. 29-December/1936.  
Oil over black conté crayon on canvas. [46 x 55]  
46,4 x 55,2 cm. Christie's. #19, 2352, 11/03/10.  
Formerly Sotheby's. #17, 6768, 11/08/95; Joseph  
H. Hazen Collection, NY.

**OPP.36:524**; PP.36:113; PP.37:253; Z.IX:91;  
CM.94\*:10p; CM.95b\*:17; GE.54c\*:n/a;  
JR.66b\*:32; PA.44a\*:n/a

---

**Nature morte au verre.** Le Tremblay-sur-Mauldre. 1936 [Winter/1938~1939]. Wood, metal, cardboard, clay, plaster & ceramic. 27 cm. Private collection.

**OPP.36:160**; P.IV:1160; PP.38:201;  
WS:169; BR.83a\*:169; JB.92\*:96;  
JL.66\*:267; RP.67b\*:65; RP.67c\*:65







**Empreinte (au sucre) de la main de Picasso.** Paris. 1936. Sugar lift aquatint on ancient Japan paper. 15,5 x 11 cm. Fine Arts Museums of San Francisco. (Inv 2000.200.60.1). The Reva and David Logan Collection of Illustrated Books.

**OPP.36:247**; Ba:607.2Bc; MS.04:55p; SS.76:119

**Le crapaud (I).** Paris. 1936. Sugar-lift aquatint with drypoint. 41,7 x 30,5 cm. Sotheby's. #70, N10015, 11/21/19.

**OPP.36:250**; Ba:356.01



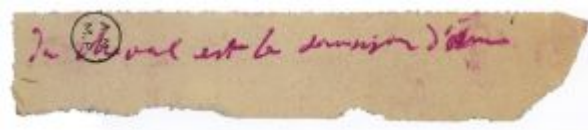


**Couverture (Paul Éluard, Les Yeux fertiles)**. Paris. 1936. Mixed media. 18,4 x 11,6 cm. Christie's. #443, 17875, 07/05/19.

**OPP.36:265**

**de cheval est ....** Paris. [1936]. Pink ink on newsprint. 2,4 x 11,9 cm. Musée Picasso, Paris. (Inv APCS A.1.3).

**OPP.36:282**; AB.00\*:110





**Signature (Paul Éluard, La Barre d'appui).** Paris. 1936. Ink on paper. 21,1 x 15,7 cm. Artcurial. #222, 2504, 06/04/14.

**OPP.36:287**

---

**Dora en faunesse et le Minotaure.** Paris. [1936]. Engraved African ivory bracelet. 6,6 cm. Private collection. Formerly Dora Maar Collection.

**OPP.36:297**; CE.04:40





**Visage.** Paris. 1936. Pencil on blue paper. 14,6 x 11,4 cm. Sotheby's. #76, N09727, 05/18/17. Formerly Marina Picasso Collection.

---

**OPP.36:302**

**La sauterelle (I).** Paris. 1936. Sugar-lift aquatint with drypoint. 41,5 x 31,5 cm. Sotheby's. #18, N09647, 10/23-24/2017.

---

**OPP.36:303**; Ba:605.1





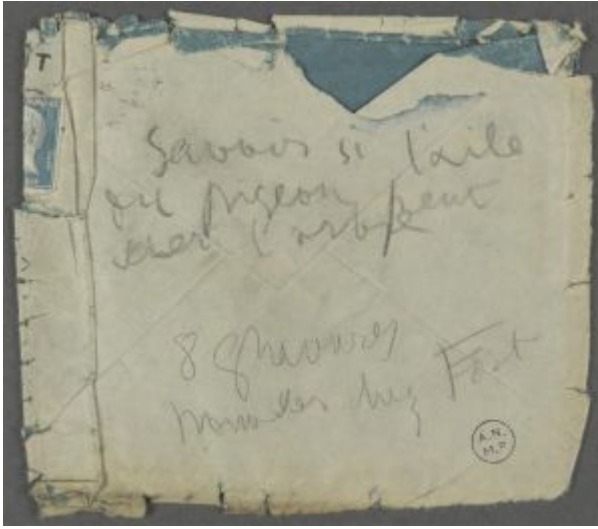
**La sauterelle (II).** Paris. 1936. Sugar-lift aquatint. 41,5 x 31,5 cm. Sotheby's. #18, N09647, 10/23-24/2017.

**OPP.36:304;** Ba:605.2

**La sauterelle (III).** Paris. 1936. Sugar-lift aquatint. 41,5 x 31,5 cm. Sotheby's. #18, N09647, 10/23-24/2017.

**OPP.36:305;** Ba:605.3





**Mot au dos d'une enveloppe: Savoir si l'aile du pigeon peut scier l'arbre ....** Paris. 1936. Pencil on paper. S/U. Musée Picasso, Paris.

**OPP.36:314**

---

**L'aveille (L'abeille) (I).** Paris. 1936. Sugar-lift aquatint. 41,5 x 31,3 cm. Sotheby's. #67, N10015, 11/21/19.

**OPP.36:315;** Ba:596.1





**Le chardonneret (III)**. Paris. 1936. Aquatint, scraper & drypoint. 41,6 x 3 cm. Musée Picasso, Paris.

**OPP.36:327**; Ba:595.3; MPP:2940

**La libellule (II)**. Paris. 1936. Aquatint, scraper & drypoint. 39,7 x 26,8 cm. Musée Picasso, Paris.

**OPP.36:328**; Ba:601.2; MPP:2946





**La puce (II)**. Paris. 1936. Aquatint, scraper & drypoint. 41,6 x 31,6 cm. Musée Picasso, Paris.

**OPP.36:332**; Ba:606.2; MPP:2951

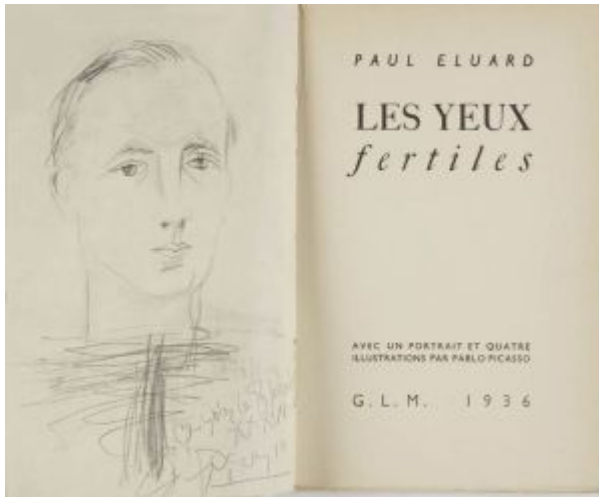
---

**Main (Paul Éluard, La Barre d'appui)**. Paris. 1936. Drypoint & aquatint. 21 x 15,2 cm. Christie's. #428, 17875, 07/05/19.

**OPP.36:337**; GC:26.3







**Couverture et frontispiece (Paul Éluard, *Les Yeux fertiles*).** Paris. 1936. Illustration [After *Portrait de Paul Éluard (Paul Éluard, Les Yeux fertiles)*]. 19,5 x 24,5 cm. Museu Picasso, Barcelona.

**OPP.36:351**; BA.19c\*:34p

---

**Portrait de Nusch Éluard.** [Paris]. 1936. Pencil on paper. 20,9 x 13,3 cm. Musée d'Art et d'Histoire Paul Éluard, Saint-Denis. (Inv 3948).

**OPP.36:352**; BA.19c\*:137p





**Enveloppe vide manuscrite par l'artiste adressée à Dora Maar.** Paris. [1936]. Color oencil. 14,5 x 10 cm. Musée Picasso, Paris.

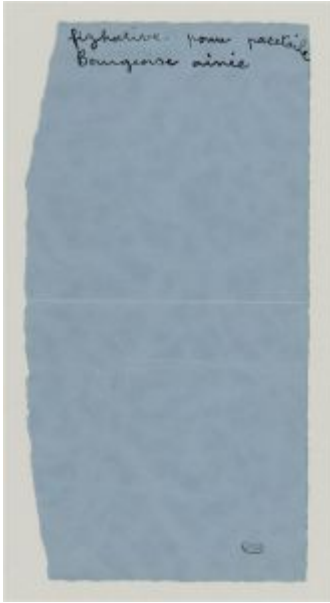
**OPP.36:502**; MPP:1998-39

---

**Figure féminine.** Paris. [1936]. Graphite on beige Vélín paper [Obverse]. 27,1 x 21 cm. Musée Picasso, Paris.

**OPP.36:503**; MPP:3663.1.r



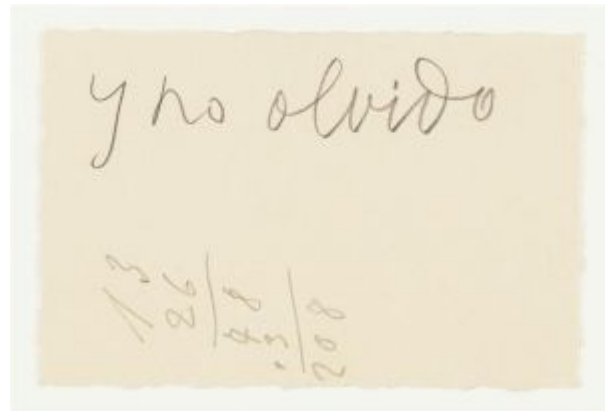


**Fizhative ....** Paris. [1936]. Pen & gray ink on blue paper. 21 x 10,7 cm.  
Musée Picasso, Paris.

**OPP.36:504**; MPP:3663.13.01r

**Y no olvido ....** Paris. [1936]. Red ink,  
graphite on cardboard. 6,9 x 10,5 cm.  
Musée Picasso, Paris.

**OPP.36:505**; MPP:3663.7





**Bon de commande de la Maison Fouquet confiseur avec l'adresse Dora Maar écrite par l'artiste.** Paris. [1936]. Black ink on colored paper. 8,2 x 12,1 cm. Musée Picasso, Paris.

OPP.36:506; MPP:1998.60.r

**Desde que pisamos el muelle ....** Paris. [1936]. Typescript on paper. 26 x 34,5 cm. Musée Picasso, Paris.

OPP.36:507; MPP:3663.8-1(5).1-4





**Desde que pisamos el muelle ....** Paris. [1936].  
Typescript on paper. 26 x 24,5 cm. Musée Picasso, Paris.

**OPP.36:508; MPP:3663.8-1(5).2-3**

**carta del emigrado amada ....** Paris.  
[1936]. Typescript on paper. 25,6 x 34,5  
cm. Musée Picasso, Paris.

**OPP.36:509; MPP:3663.8-2(1).1-4**





**carta del emigrado amada ...** Paris. [1936].  
Typescript on paper. 25,6 x 34,5 cm. Musée  
Picasso, Paris.

**OPP.36:510**; MPP:3663.8-2(1).2-3

**cuentame que piense ...** Paris. [1936].  
Typescript on paper. 25,5 x 35,5 cm. Musée  
Picasso, Paris.

**OPP.36:511**; MPP:3663.8-2(2).1-4





**cuentame que piense ....** Paris. [1936].  
Typescript on paper. 25,5 x 35,5 cm. Musée  
Picasso, Paris.

**OPP.36:512**; MPP:3663.8-2(2).2-3

**Desde que pisamos el muelle ....** Paris.  
[1936]. Typescript on paper. 25,9 x 34,5  
cm. Musée Picasso, Paris.

**OPP.36:513**; MPP:3663.8-1(3).r





**Desde que pisamos el muelle ....** Paris. [1936].  
Typescript on paper. 25,9 x 34,5 cm. Musée  
Picasso, Paris.

**OPP.36:514**; MPP:3663-8-1(3).v

**Lo bueno de la buena esto ....** Paris.  
[1936]. Graphite on paper. 7,9 x 9 cm.  
Musée Picasso, Paris.

**OPP.36:515**; MPP:3663.2r







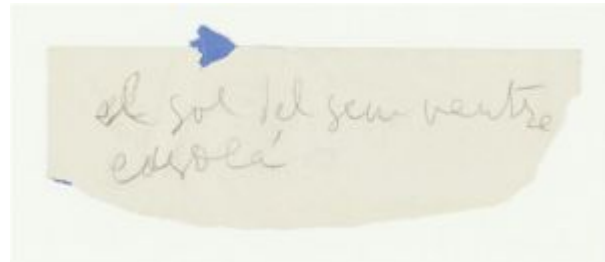
**Lo bueno de la buena esto ....** Paris. [1936].  
Graphite on paper. 7,9 x 9 cm. Musée Picasso,  
Paris.

**OPP.36:516**; MPP:3663.2v

---

**El sol del ....** Paris. [1936]. Pencil on  
paper. 4,9 x 14,6 cm. Musée Picasso, Paris.

**OPP.36:517**; MPP:3663-3





**Je suis venu ....** Paris. [1936]. Pastel. 28,5 x 16,5 cm. Musée Picasso, Paris.

**OPP.36:518**; MPP:1998-418

**Homme au masque, femme et enfant dans son berceau.** Juan-les-Pins. 1936. Lithograph [After *Homme au masque, femme et enfant dans son berceau*]. 50 x 65,5 cm. Private collection.

**OPP.36:519**



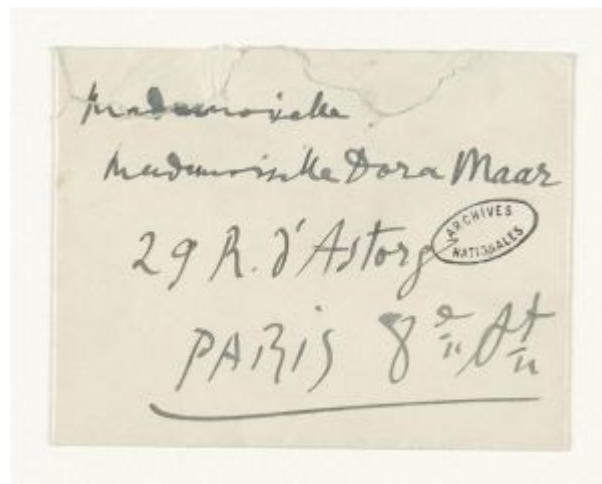


**Petite carte de type carte de visite avec inscription manuscrite.** Paris. [1936]. Black ink on beige paper. 6,5 x 6 cm. Musée Picasso, Paris.

**OPP.36:521**; MPP:1998-40(1)

**Enveloppe de petite carte de type carte de visite avec inscription manuscrite.** Paris. [1936]. Black ink on paper. 6,5 x 6 cm. Musée Picasso, Paris.

**OPP.36:522**; MPP:1998-40(2)r





**Enveloppe de petite carte de type carte de visite avec inscription manuscrite.** Paris. [1936]. Enveloppe. 7,7 x 9,6 cm. Musée Picasso, Paris.

**OPP.36:523**; MPP:1998-40(2)v

**Pot scie ma lady guai rit sable ....** Paris. 1936. Graphite pencil on paper. 7,5 x 8,6 cm. Musée Picasso, Paris.

**OPP.36:525**; MPP:1998.59r





**Enveloppe à Dora Maar.** Paris. [1936]. Ballpoint pen on envelope [Obverse of *Enveloppe à Dora Maar*]. 11 x 14,2 cm. Musée Picasso, Paris.

**OPP.36:526**; MPP:1998.76r

---

**Enveloppe à Dora Maar.** Paris. [1936]. Ballpoint pen on envelope [Reverse of *Enveloppe à Dora Maar*]. 11 x 14,2 cm. Musée Picasso, Paris.

**OPP.36:527**; MPP:1998.76v





**Enveloppe à Dora Maar.** Paris. [1936]. Colored pencil on envelope [Obverse of *Enveloppe à Dora Maar*]. 11 x 14,2 cm. Musée Picasso, Paris.

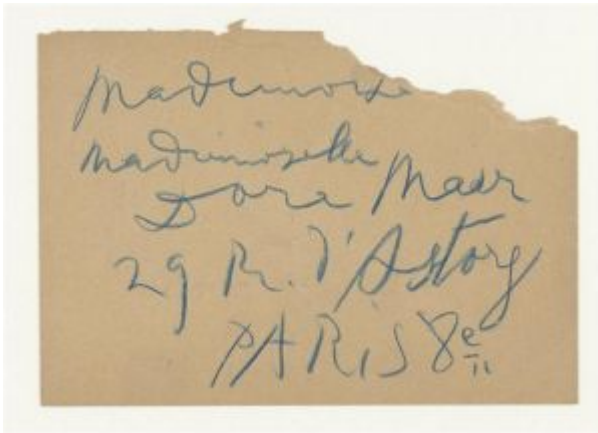
**OPP.36:528**; MPP:1998.77r

---

**Enveloppe à Dora Maar.** Paris. [1936]. Colored pencils on envelope [Reverse of *Enveloppe à Dora Maar*]. 11 x 14,2 cm. Musée Picasso, Paris.

**OPP.36:529**; MPP:1998.77v





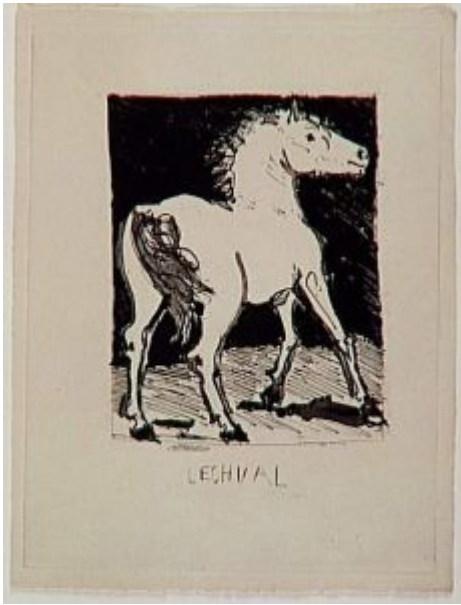
**Enveloppe autographe à Dora Maar.** Paris. [1936]. Colored pencils on envelope [Obverse of *Enveloppe autographe à Dora Maar*]. 12,7 x 18,4 cm. Musée Picasso, Paris.

**OPP.36:530**; MPP:1998.79r

**Enveloppe autographe à Dora Maar.** Paris. [1936]. Colored pencils on envelope [Reverse of *Enveloppe autographe à Dora Maar*]. 12,7 x 18,4 cm. Musée Picasso, Paris.

**OPP.36:531**; MPP:1998.79v





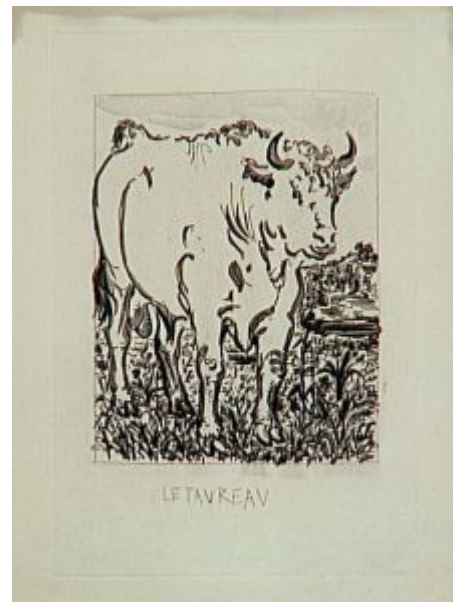
**Le cheval (II)**. Paris. 1936. Aquatint, scraper & drypoint. 41,6 x 3 cm. Musée Picasso, Paris.

**OPP.36:541**; Ba:575.1; MPP:2920

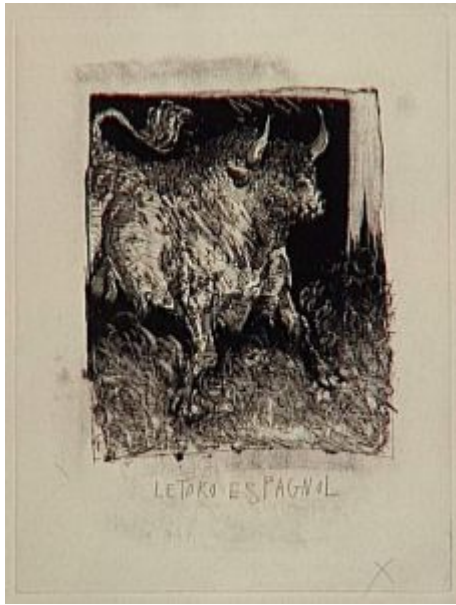
---

**Le taureau (II)**. Paris. 1936. Aquatint, burin & drypoint. 39,7 x 26,8 cm. Musée Picasso, Paris.

**OPP.36:544**; Ba:577.2; MPP:2922







**Le Toro espagnol (III)**. Paris. 1936. Aquatint, scraper & drypoint. 41,5 x 31,6 cm. Musée Picasso, Paris.

**OPP.36:545**; Ba:578.3; MPP:2923

---

**Le Bellier (Le Bélier)**. Paris. 1936. Aquatint, scraper & drypoint. 41,6 x 31,6 cm. Musée Picasso, Paris.

**OPP.36:546**; Ba:579.2; MPP:2924





**Le chat (II)**. Paris. 1936. Aquatint, scraper & drypoint. 29 x 31 cm. Musée Picasso, Paris.

**OPP.36:547**; Ba:580.2; MPP:2925

---

**Le chien (II)**. Paris. 1936. Aquatint, burin & drypoint. 41,6 x 31,5 cm. Musée Picasso, Paris.

**OPP.36:548**; Ba:581.2; MPP:2926





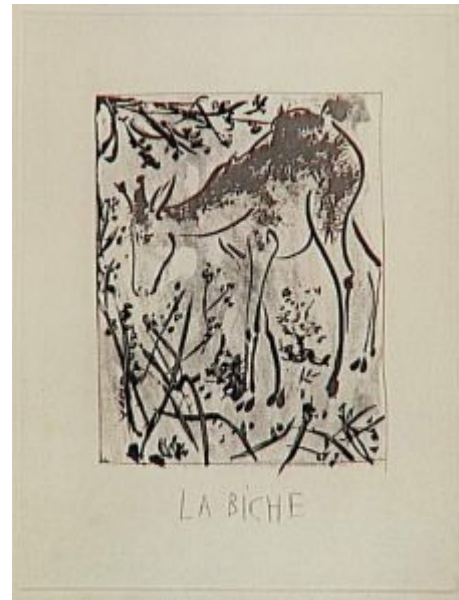
**La chèvre (II)**. Paris. 1936. Aquatint, scraper & drypoint.  
39,7 x 26,8 cm. Musée Picasso, Paris.

**OPP.36:549**; Ba:582.2; MPP:2927

---

**La biche (II)**. Paris. 1936. Aquatint, scraper & drypoint.  
41,6 x 31,5 cm. Musée Picasso, Paris.

**OPP.36:550**; Ba:583.2; MPP:2928





**Le loup.** Paris. 1936. Aquatint. 34,7 x 24,7 cm. Musée Picasso, Paris.

**OPP.36:551**; Ba:584; MPP:2929

**La lionne (La lionne).** Paris. 1936. Aquatint, drypoint & burin. 41,5 x 31,5 cm. Musée Picasso, Paris.

**OPP.36:552**; Ba:585; MPP:2930





**Le vautour.** Paris. 1936. Aquatint & drypoint. 41,5 x 31,5 cm.  
Musée Picasso, Paris.

**OPP.36:555**; Ba:588; MPP:2933

---

**L'épervier.** Paris. 1936. Aquatint & drypoint. 39,6 x  
26,8 cm. Musée Picasso, Paris.

**OPP.36:556**; Ba:589; MPP:2934





**L'autruche (II)**. Paris. 1936. Aquatint & drypoint. 41,5 x 31,5 cm. Musée Picasso, Paris.

**OPP.36:557**; Ba:590.2; MPP:2935

---

**La sauterelle (IV)**. Paris. 1936. Aquatint, scraper & drypoint. 41,7 x 31,6 cm. Musée Picasso, Paris.

**OPP.36:558**; Ba:605.4; MPP:2950





**La mère poule (III)**. Paris. 1936. Aquatint, drypoint & burin. 41,5 x 3 cm. Musée Picasso, Paris.

**OPP.36:559**; Ba:592.3; MPP:2937

---

**Le dindon (III)**. Paris. 1936. Aquatint, drypoint & burin. 41,5 x 31,5 cm. Musée Picasso, Paris.

**OPP.36:560**; Ba:593.3; MPP:2938





**Le crapaud (II)**. Paris. 1936. Aquatint, scraper & drypoint. 41,8 x 31,6 cm. Musée Picasso, Paris.

**OPP.36:562**; Ba:603.2; MPP:2948

---

**L'aveille (L'abeille) (II)**. Paris. 1936. Aquatint, scraper & drypoint. 41,7 x 31,5 cm. Musée Picasso, Paris.

**OPP.36:563**; Ba:596.2; MPP:2941







**Le papillon (II)**. Paris. 1936. Aquatint, burin & drypoint. 39,5 x 26,7 cm. Musée Picasso, Paris.

**OPP.36:564**; Ba:597.2; MPP:2942

---

**La guêpe (III)**. Paris. 1936. Aquatint, scraper & drypoint. 41,6 x 31,5 cm. Musée Picasso, Paris.

**OPP.36:565**; Ba:598.3; MPP:2943





**La langouste (III)**. Paris. 1936. Aquatint & drypoint. 41,5 x 31,5 cm. Musée Picasso, Paris.

**OPP.36:566**; Ba:599.3; MPP:2944

---

**L'araignée (II)**. Paris. 1936. Aquatint, scraper & drypoint. 39,6 x 26,7 cm. Musée Picasso, Paris.

**OPP.36:567**; Ba:600.2; MPP:2945





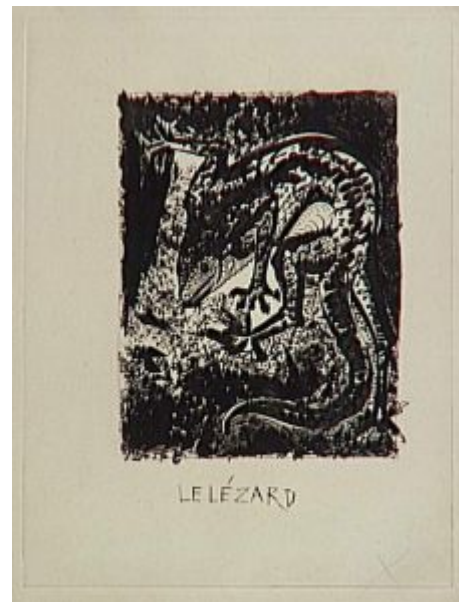
**Les grenouilles (II)**. Paris. 1936. Aquatint, scraper & drypoint. 39,6 x 26,8 cm. Musée Picasso, Paris.

**OPP.36:568**; Ba:604.2; MPP:2949

---

**Le lézard (II)**. Paris. 1936. Aquatint & drypoint. 41,6 x 31,6 cm. Musée Picasso, Paris.

**OPP.36:569**; Ba:602.2; MPP:2947





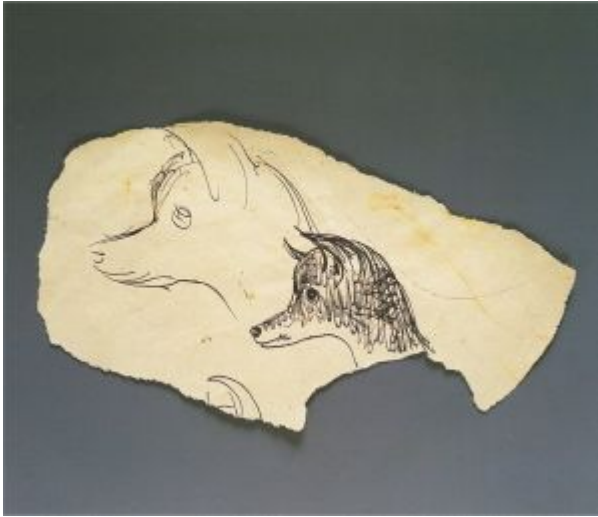
**Couverture (Paul Éluard, La Barre d'appui).**  
Paris. 1936. Mixed media. 21,2 x 16 cm. Christie's.  
#139, 21395, 05/02-12/22.

**OPP.36:570**

**Dora de profil en femme-oiseau.** Paris. 1936.  
Pencil on tracing paper. 17,5 x 12 cm. Private  
collection. Formerly Dora Maar Collection.

**OPP.36:578**; PA.98d\*:106





**Études de têtes de chien.** Paris. 1936. Ink on torn paper. 13 x 24 cm. Private collection. Formerly Dora Maar Collection.

**OPP.36:579**; PA.98d\*:112

---

**Signature sur une photographie (Pour mon ami Jakovsky).** Paris. [1936]. Ink on photograph. 28,5 x: 22,5 cm. KOTTE Autographs GmbH, Rosshaupten.

**OPP.36:583**





**Jeune femme surprenant le reflet d'une hirondelle dans son miroir.** Paris. 1936. Varnish on copper plate on Montval Vergé paper. 34,8 x 24,6 cm (Plate). Sotheby's. #86, N08585, 10/29/09. Also Museu Picasso, Barcelona. Formerly Jaume Sabartés Collection.

**OPP.36:069**; B.I:290; Ba:610; MPB:70.238; P.IV:823; PE.00\*:62

**Dora Maar de face.** Paris. 1936. Gouache, pen & ink on mirror. 7,3 x 5,4 cm. Sotheby's. #355, N07892, 05/07/03. Formerly Dora Maar Collection.

**OPP.36:070**; PA.98d\*:129





**Portrait de Dora (Bague de forme ovale).** Paris. 1936~1937. Ink & color pencil in yellow gold ring with polychrome enamel decoration. 2,5 x 1,4 cm. Sotheby's. #18, L17007, 06/21/17. Formerly Dora Maar Collection.

**OPP.36:267**; MC.00:120p; PA.98d\*:91

---

**Portrait de Nusch Éluard.** Paris. 1936~1937. Pencil on paper. [32 x 23,5] 32 x 24,4 cm. Bonhams. #19AR, 23578, 06/23/16. Formerly Dora Maar Collection.

**OPP.36:301**; BA.19c\*:137p; MC.00:140p; PA.98d\*:77





**Études de femme-oiseau.** Paris. 1936~1937. Pencil on silk paper. 21 x 14 cm. Private collection. Formerly Dora Maar Collection.

**OPP.36:572**; PA.98d\*:42

**Portrait de Dora Maar de face.** Paris. 1936~1937. Pencil on paper. 26,5 x 20 cm. Private collection. Formerly Dora Maar Collection.

**OPP.36:580**; PA.98d\*:113







**Palette.** Paris. 1936~1939. Black & color pencil in an oval yellow gold pendant [Reverse of *Portrait de Dora*]. 2,5 x 1,5 cm. Private collection. Formerly Dora Maar Collection.

**OPP.36:300**; CE.04:206; PA.98d\*:87

---

**Medaillon ovale en or jaune: Portrait de Dora Maar.** Paris. 1936~1939. Black & color pencil on paper decorating the side of an oval yellow gold medalion [Obverse of *Medaillon ovale en or jaune: Portrait de Dora Maar*]. 1,5 x 1 cm. Private collection. Formerly Dora Maar Collection.

**OPP.36:575**; PA.98d\*:88





**Femme nue les bras levés.** Paris. 1936~1939. Ink & color in frame-shaped pendant. 1,7 x 1 cm. Private collection. Formerly Dora Maar Collection.

**OPP.36:266**; CE.04:41; MC.00:120p; PA.98d\*:89

---

**Portrait de Dora.** Paris. 1936~1939. Black & color pencil in an oval yellow gold pendant [Obverse of *Palette*]. 2,5 x 1,5 cm. Private collection. Formerly Dora Maar Collection.

**OPP.36:268**; CE.04\*:306; MC.00:120p; PA.98d\*:87



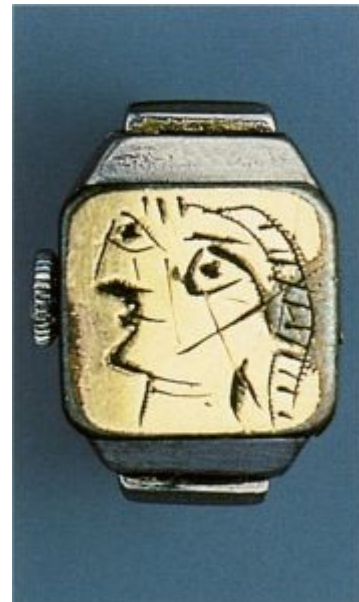


**Dora Maar au foulard.** Paris. 1936~1939. Graphite & color pencil on cardboard In a large oval metal brooch. 4 x 3,5 cm. Private collection. Formerly Dora Maar Collection.

**OPP.36:298**; CE.04:42; PA.98d\*:86

**Bague montre: Portrait de Dora Maar.** Paris. 1936~1939. Engraving on a brass plate concealing the dial of a Juvénia rectangular watch with mechanical system inserted in a chromium-plated metal ring. 1,2 x 1,3 cm. Private collection. Formerly Dora Maar Collection.

**OPP.36:299**; CE.04:43; PA.98d\*:90





**Medaillon ovale en or jaune: Portrait de Dora Maar.** Paris. 1936~1939. Black & color pencil on paper decorating the side of an oval yellow gold medallion [Reverse of *Medaillon ovale en or jaune: Portrait de Dora Maar*]. 1,5 x 1 cm. Private collection. Formerly Dora Maar Collection.

**OPP.36:574**; PA.98d\*:88

**Bague de forme ovale: Portrait de Dora Maar.** Paris. 1936~1939. Ink & color pencil in a yellow gold ring carved & circled with flowers & a polychrome enamel band. 2,3 x 1,4 cm. Private collection. Formerly Dora Maar Collection.

**OPP.36:576**; PA.98d\*:91





**Composition (La femme qui hurle) (Dora Maar).** Paris. 1936~1940. Brush & pen & India ink & colored wax crayons on paper. 27 x 21 cm. Christie's. #191, 3443, 11/05/13. Formerly Dora Maar Collection.

---

**OPP.36:284;** PP.36:117; BR.99\*:140; MA.00d\*:183;  
PA.98d\*:111; VE.99\*:154